

GARMIN

CTU WITH MAGNETIC GRAPHIC
P12534 07/01/2025 Rev A

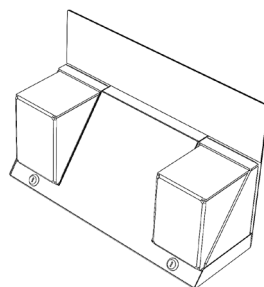
CLIENT GUIDE

Tools Required (supplied)



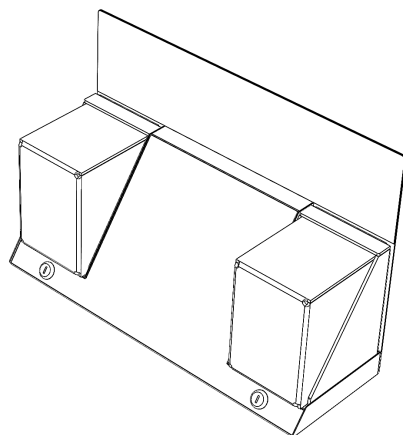
Parts

(A) x1



1

(A)

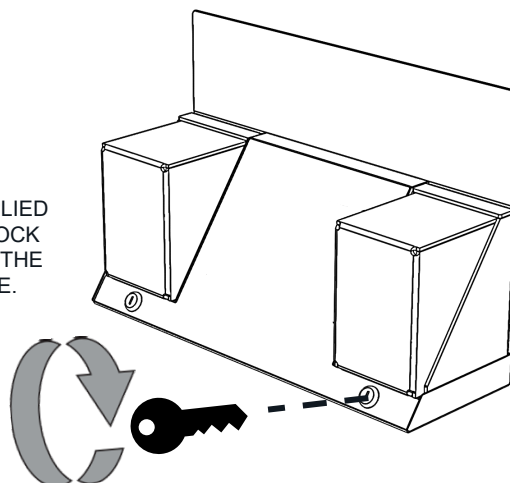


UNBOX AND REMOVE UNIT
FROM CARTON

2

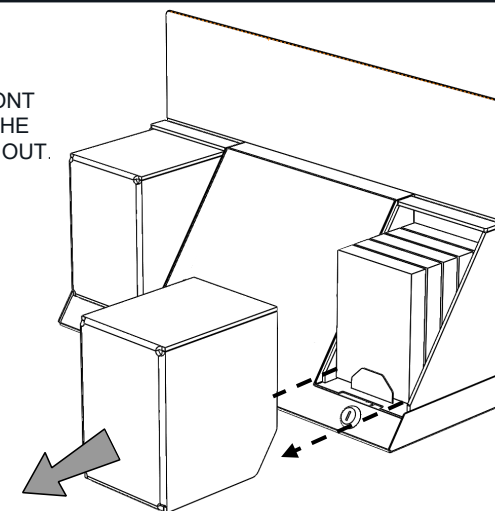
ACCESSING LOCKED PRODUCT BOX

USE THE SUPPLIED
KEYS TO UNLOCK
THE LOCK ON THE
FRONT FACE.



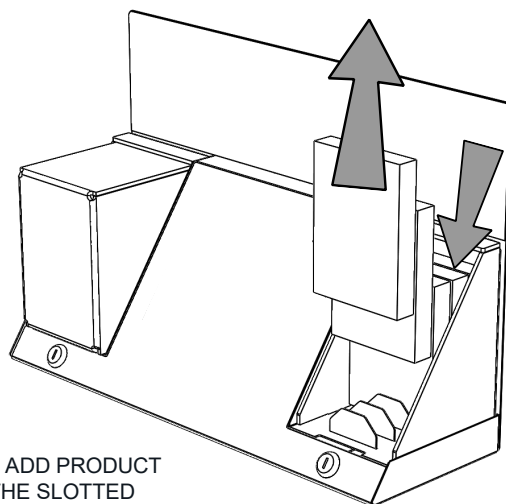
3

SLIDE THE FRONT
SECTION OF THE
PRODUCT CASE OUT.



4

REMOVE AND ADD PRODUCT
UNITS TO THE SLOTTED
SECTIONS IN THE BASE.



5

RETURN CASE
FRONT AND LOCK
USING THE KEY.

