

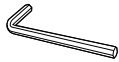
GARMIN

ACCESSORY CTU

P11902 | FEB 23

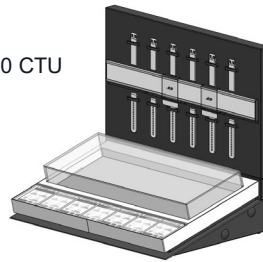
ASSEMBLY DIAGRAM

Tools Required - Supplied

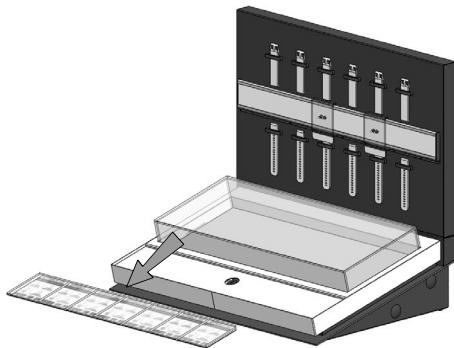


Parts

(A) X1
600 CTU

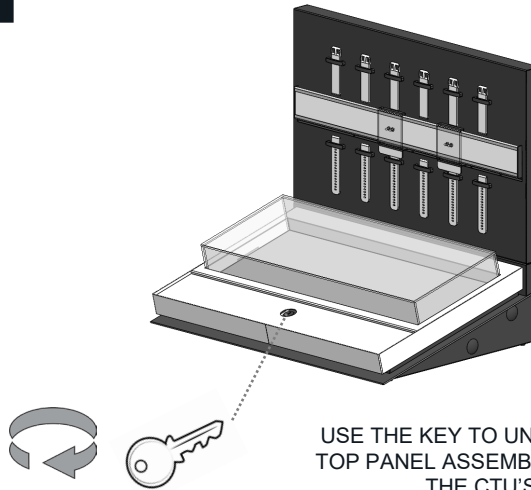


1 REPLACE AND ADD PRODUCT



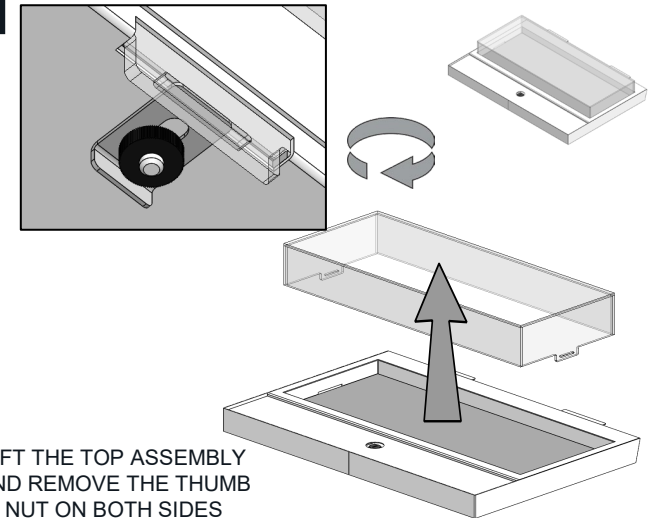
REMOVE LENS, TICKETS
AND METAL PLATE

2



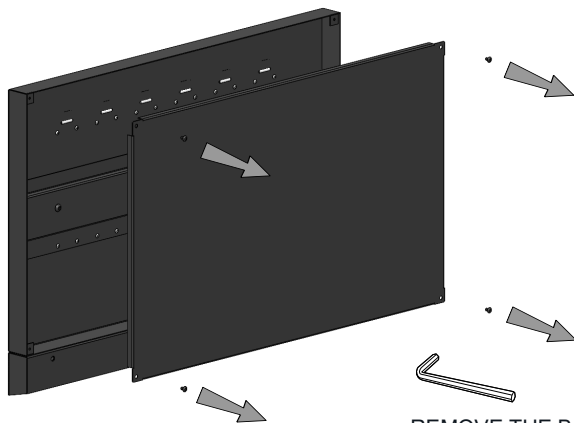
USE THE KEY TO UNLOCK THE
TOP PANEL ASSEMBLIES FROM
THE CTU'S

3



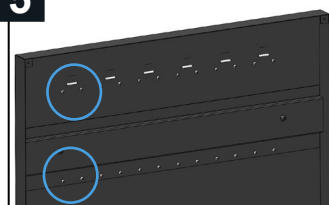
LIFT THE TOP ASSEMBLY
AND REMOVE THE THUMB
NUT ON BOTH SIDES

4 REPLACE STRAPS

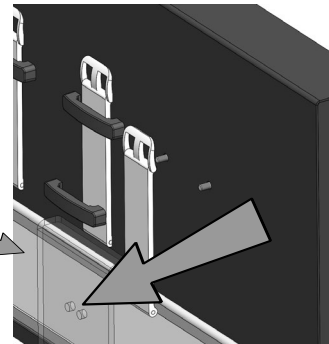
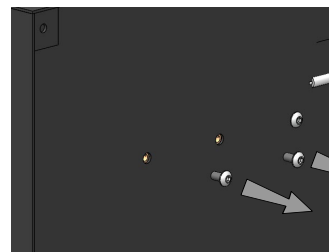


REMOVE THE BACK
PLATE FROM THE CTU

5



SELECT A STRAP AND REMOVE
TWO SCREWS FROM REAR, PULL
AWAY STRAP AND RESTRAINT



6

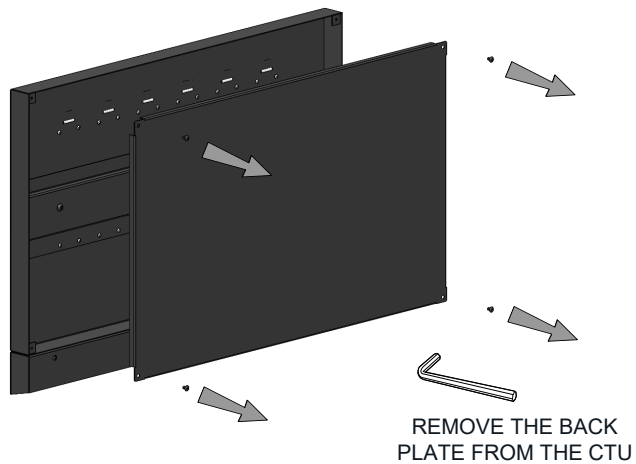


REPLACE WITH NEW STRAP
AND FIX SCREWS INTO
PLACE FROM REAR.

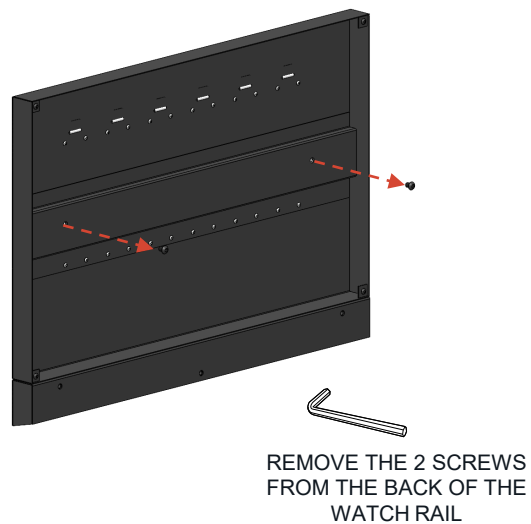
REPLACE BACK PANEL
(STEP 4)

GARMIN®

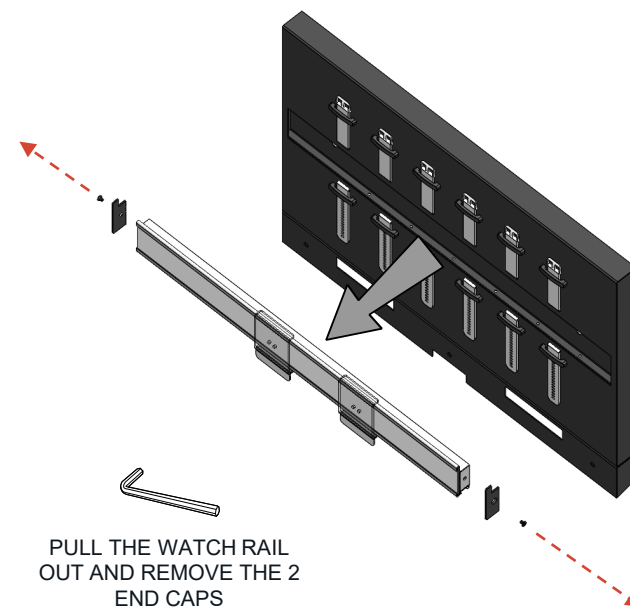
7 ADDING WATCH FACE



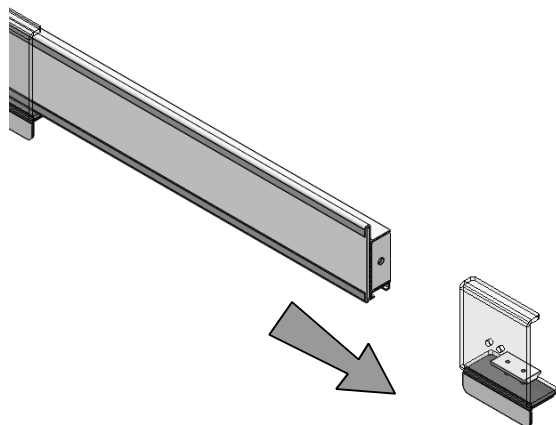
8



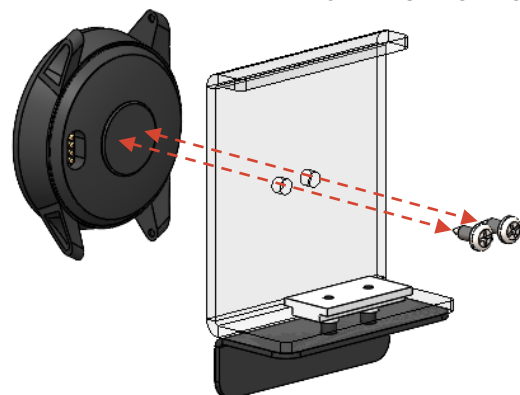
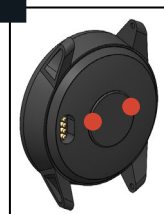
9



10



11



12

FIT THE HOLDER BACK TO THE WATCH RAIL AND FIX THE RAIL BACK INTO PLACE AND REPLACE BACK PLATE

