

GARMIN

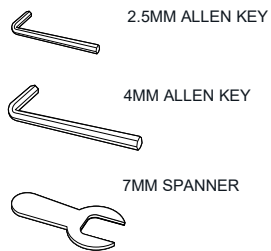
CCD DISPLAY

P12676

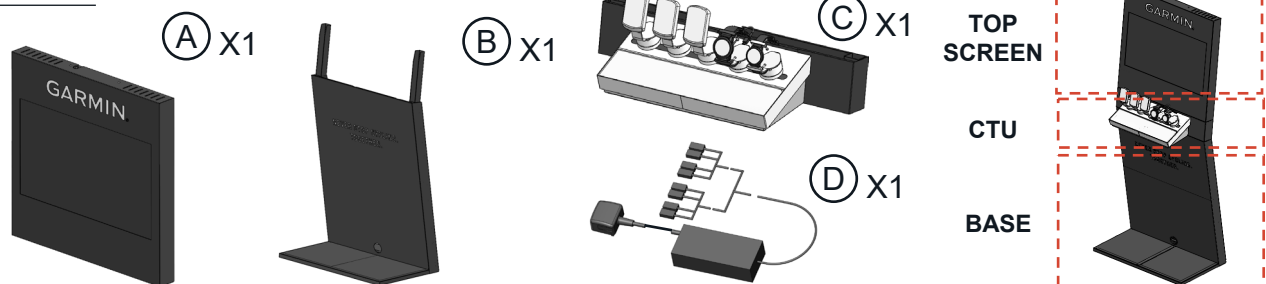
30/05/2025

ASSEMBLY GUIDE TOP SCREEN + CTU + BASE

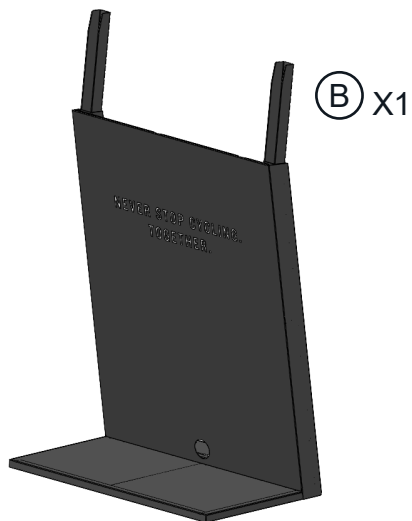
TOOLS REQUIRED



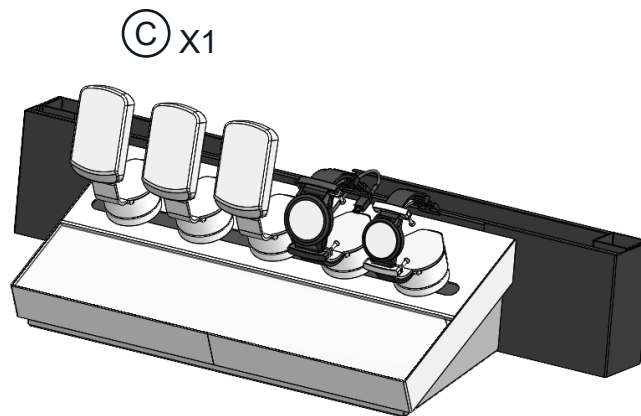
Parts



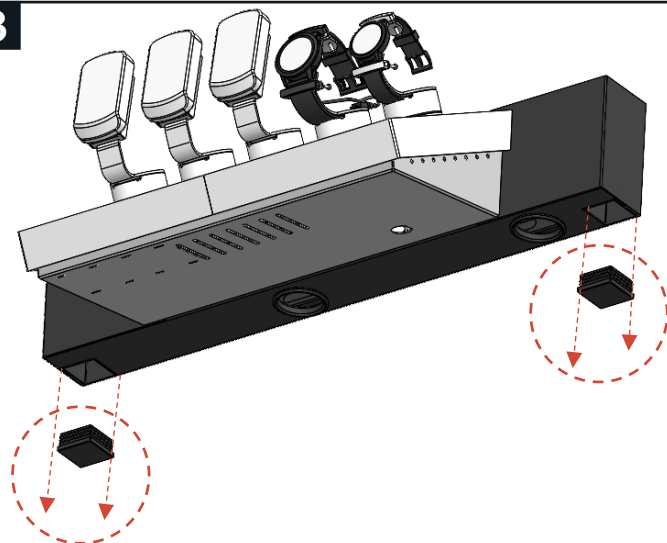
1



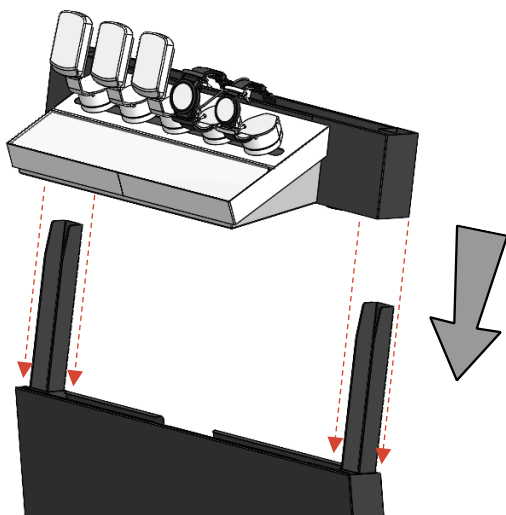
2



3

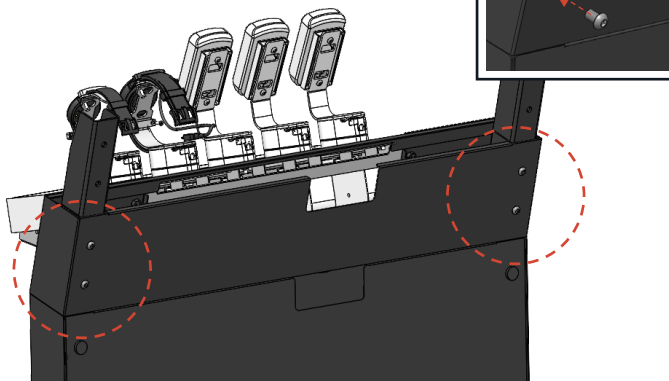


4

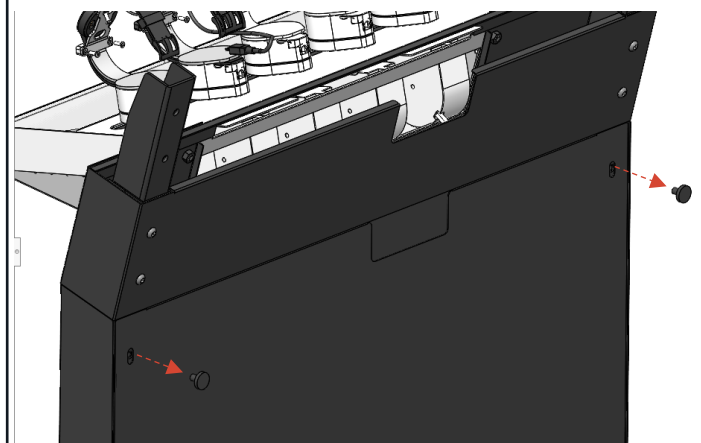


5

FASTEN THE CTU
ASSEMBLY TO
BASE WITH 4 OFF
M6X10 BLACK
SCREWS

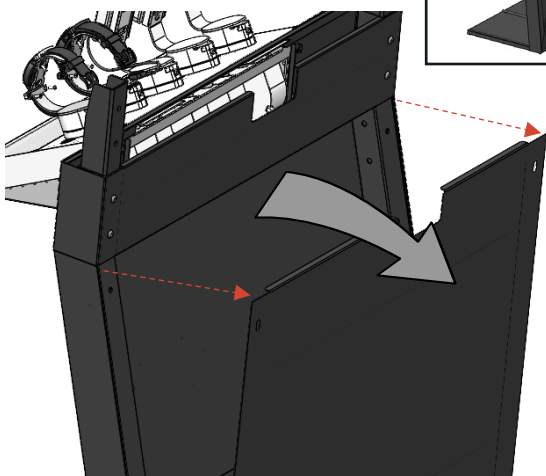


6

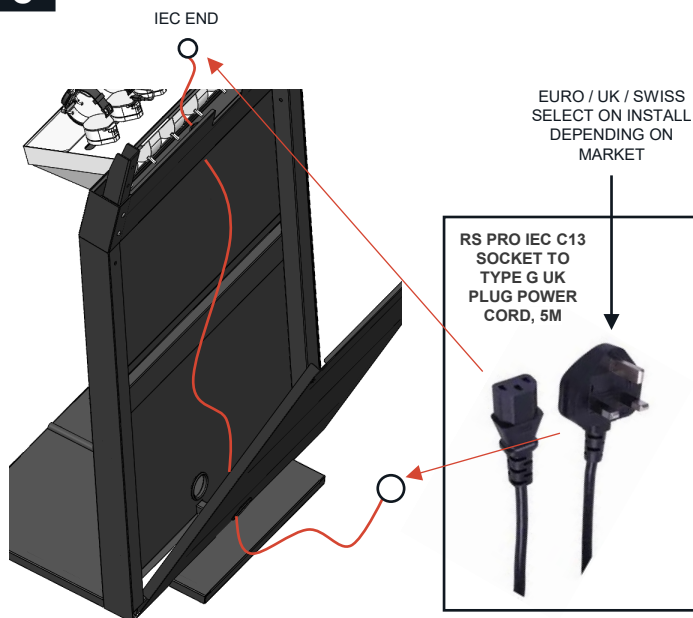


GARMIN®

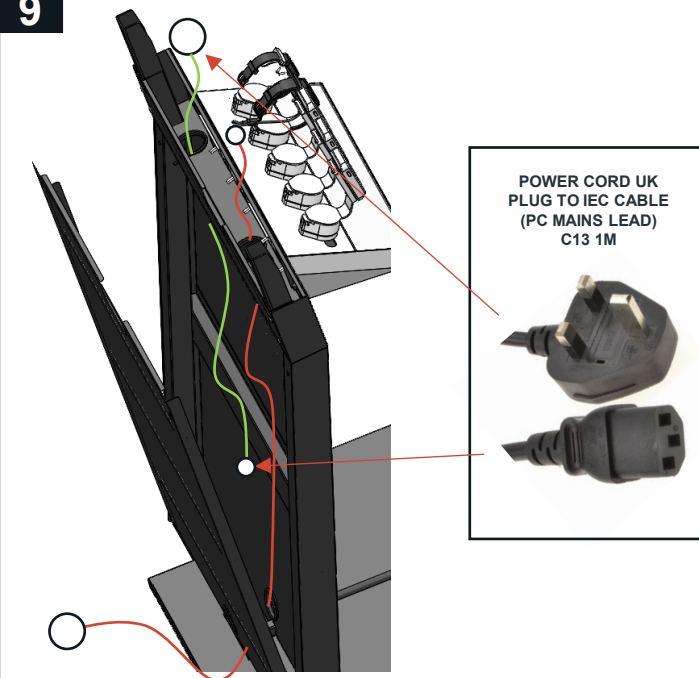
7



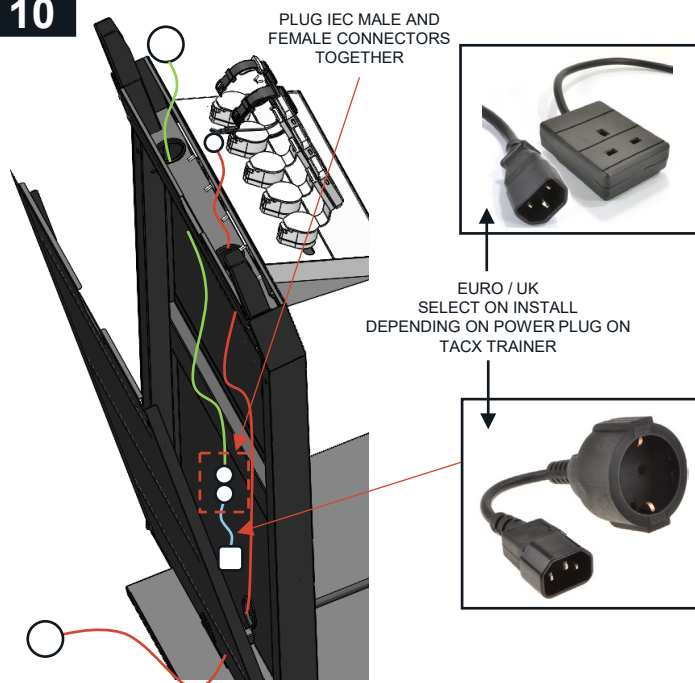
8



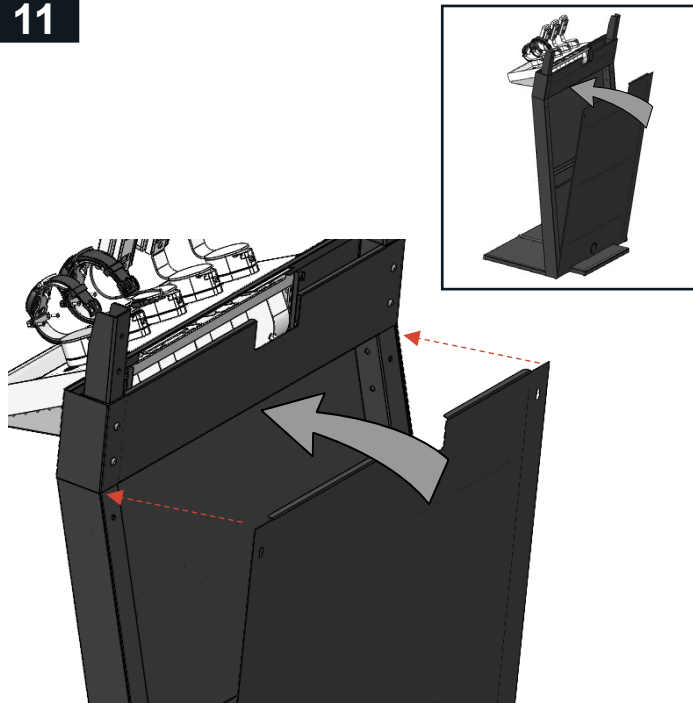
9



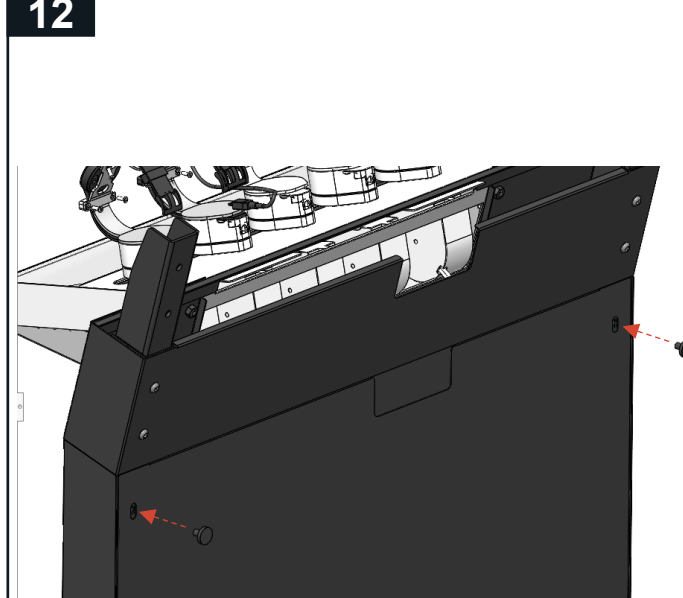
10



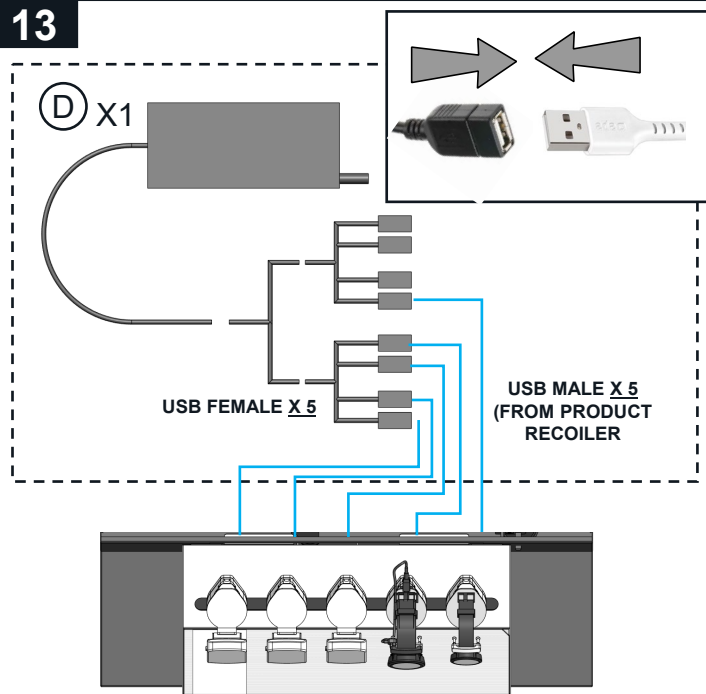
11



12



13



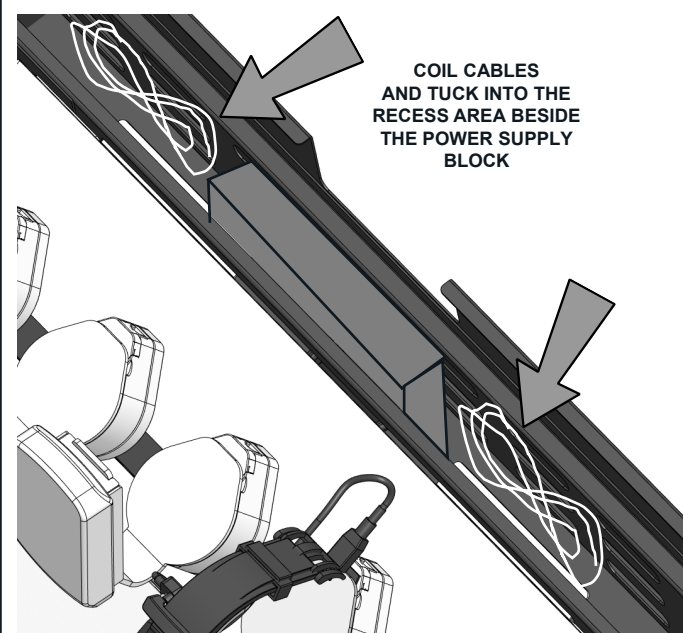
14



5 OFF SMALL
CONNECTORS NOT
REQUIRED

5 OFF USB CONNECTORS
REQUIRED

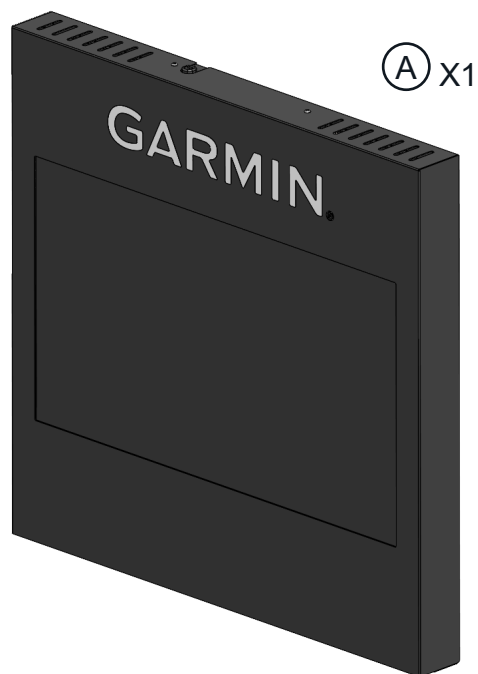
15



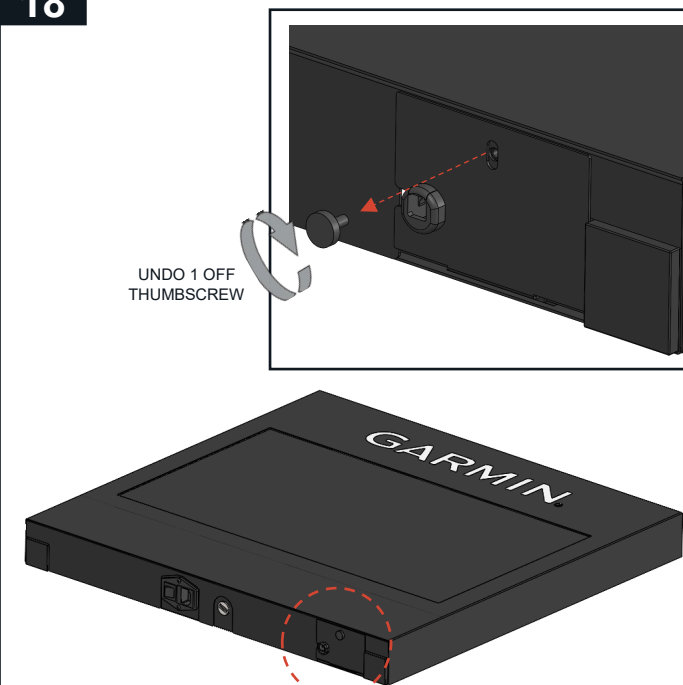
16



17

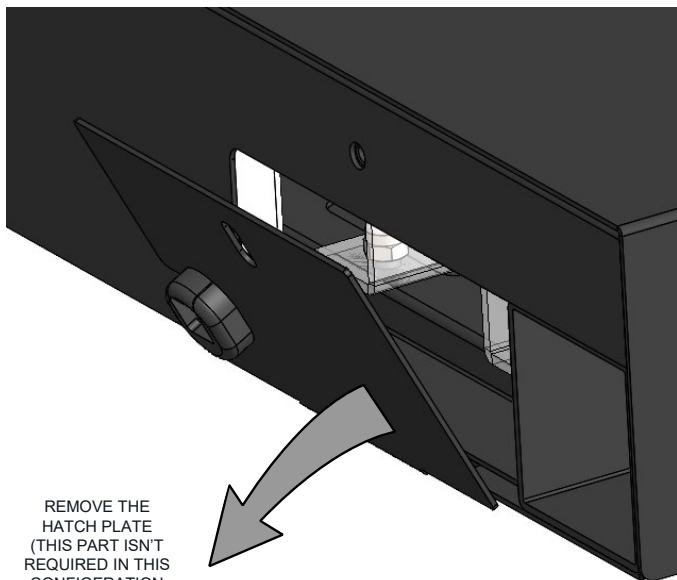


18

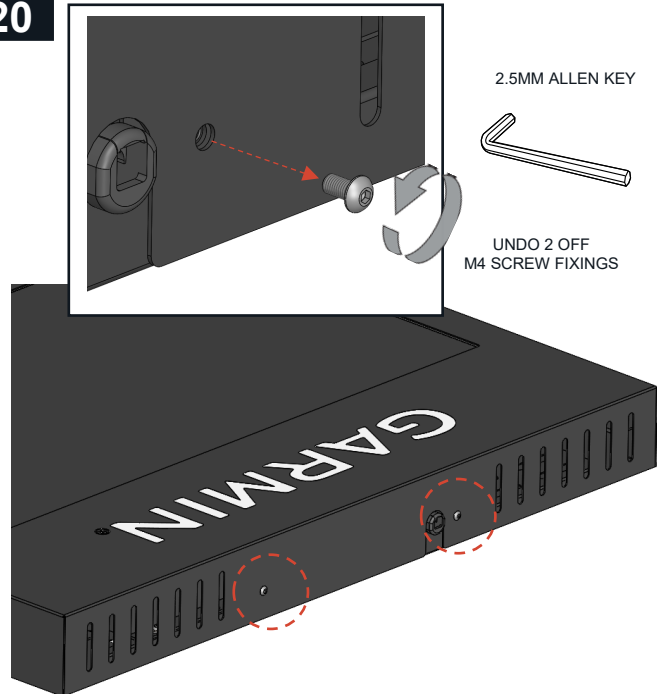


GARMIN®

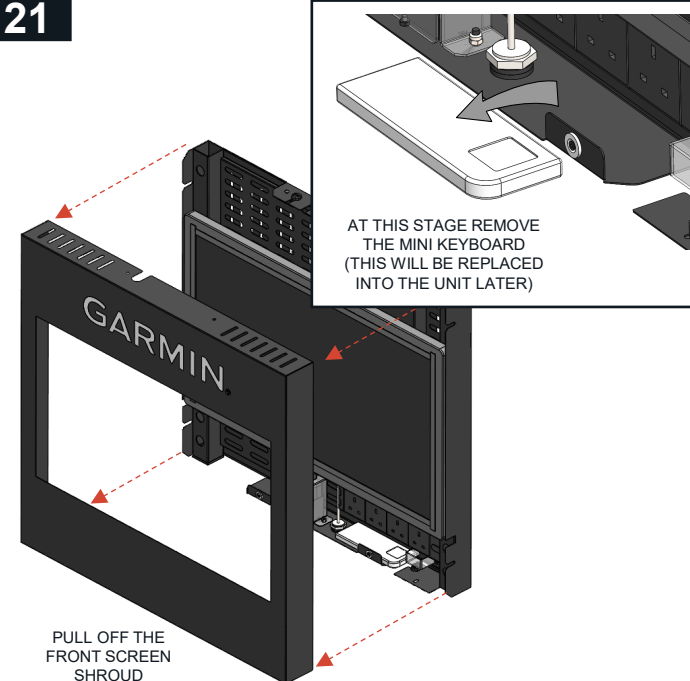
19



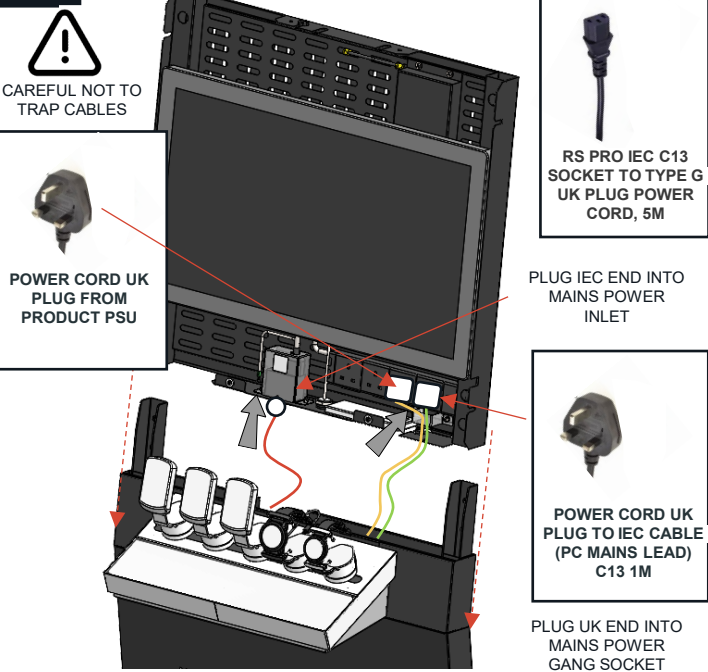
20



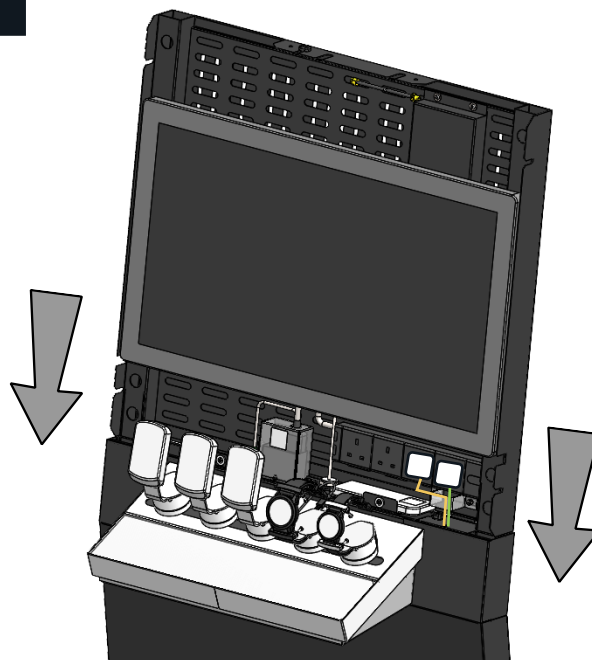
21



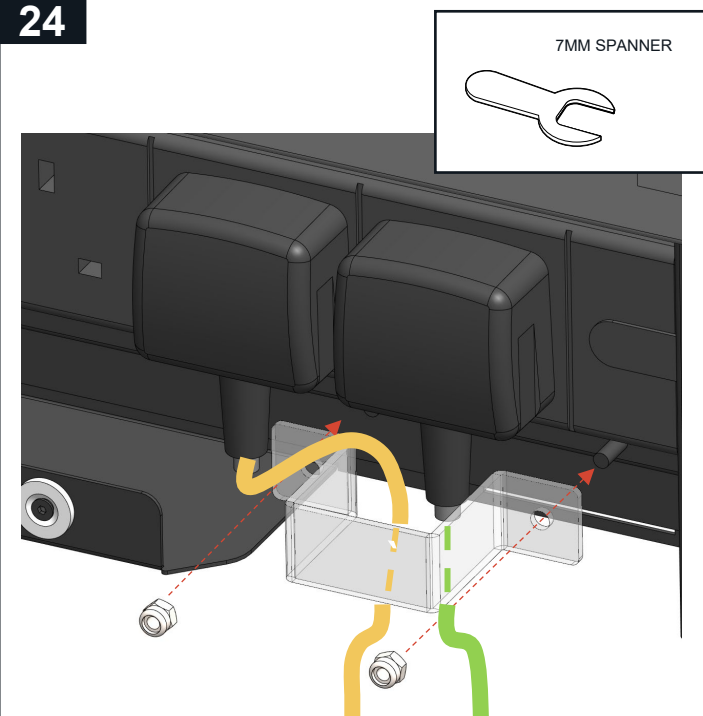
22



23



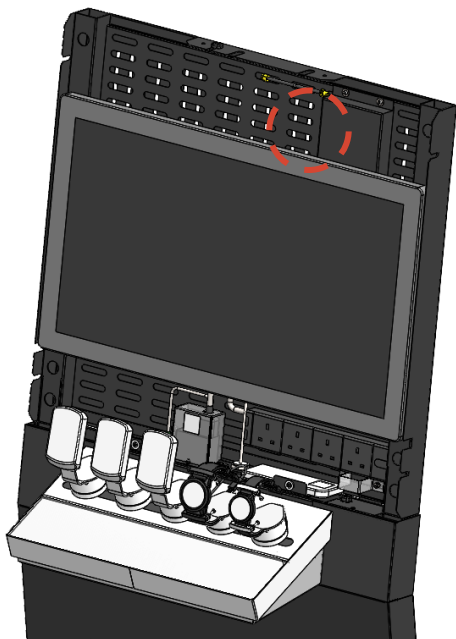
24



GARMIN®

25

CHECK THE HDMI CABLE IS IN THE CORRECT PORT



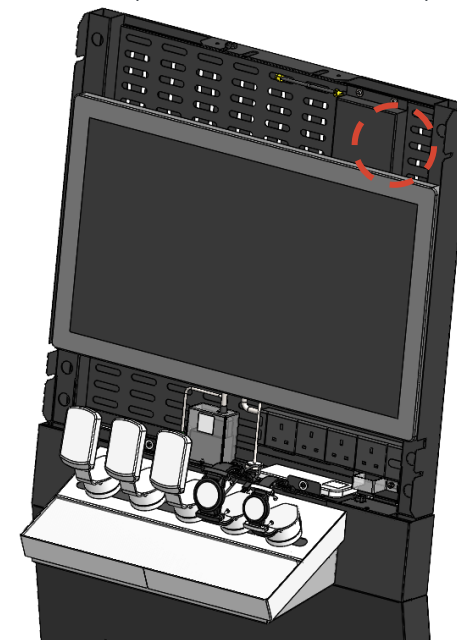
26

MAKE SURE THAT HDMI CABLE IS
PLUGGED INTO THE
HDMI OUT PORT

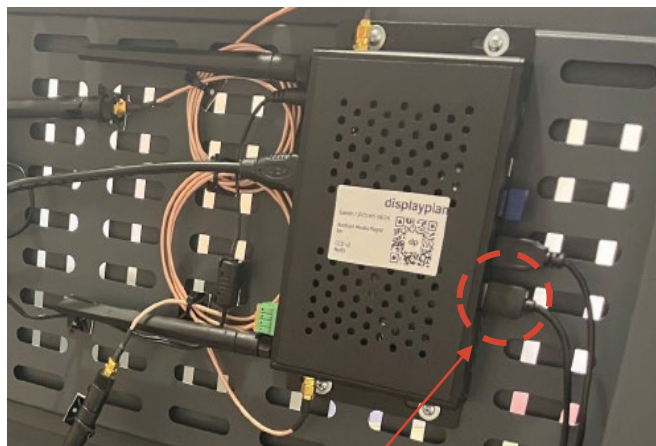


27

SWAP THE USB CABLES OVER (SO THAT THE USB CABLE
FROM THE SCREEN GOES INTO THE SECOND PORT DOWN
(AND IS PLUGGED INTO USB 2.0))



28



USB CABLE FROM SCREEN
CURRENT IN WRONG PORT

29

SWAP OVER

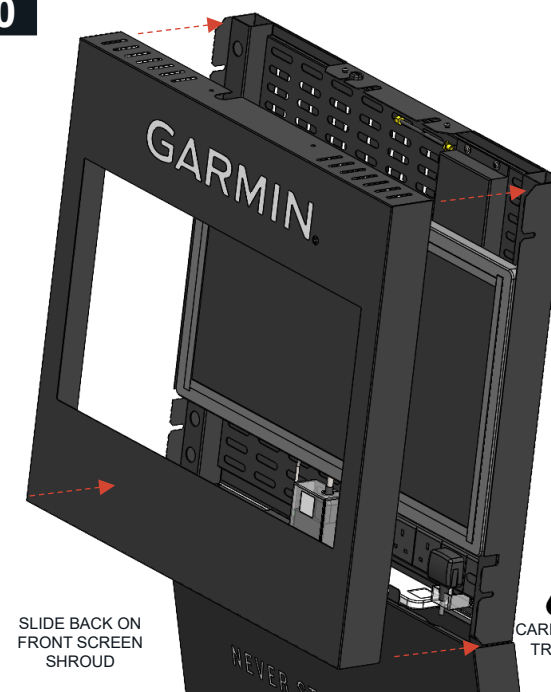
MOVE SCREEN USB
CABLE UP TO THIS

PORTS 2.0

AND MOVE THE
EXISTING USB
CABLE DOWN INTO

PORT 3.0

30

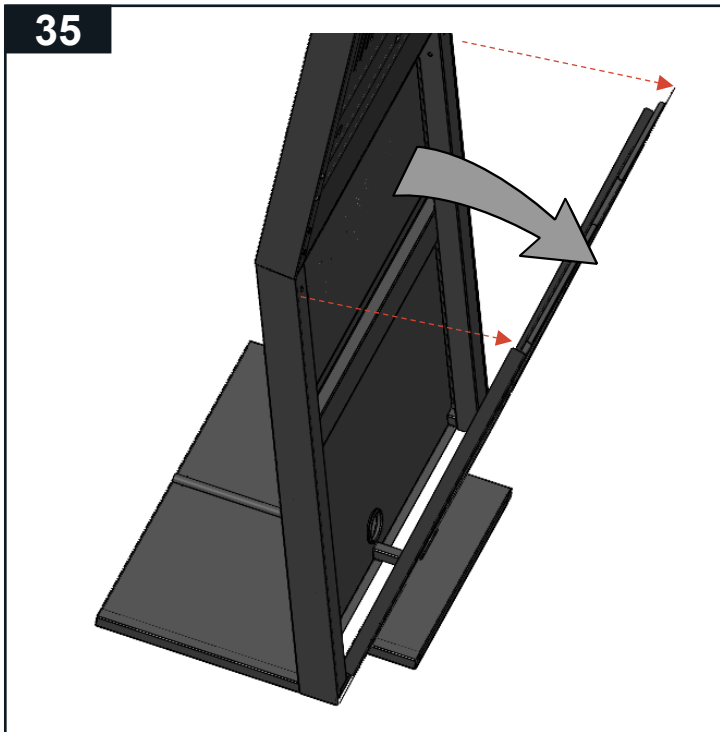
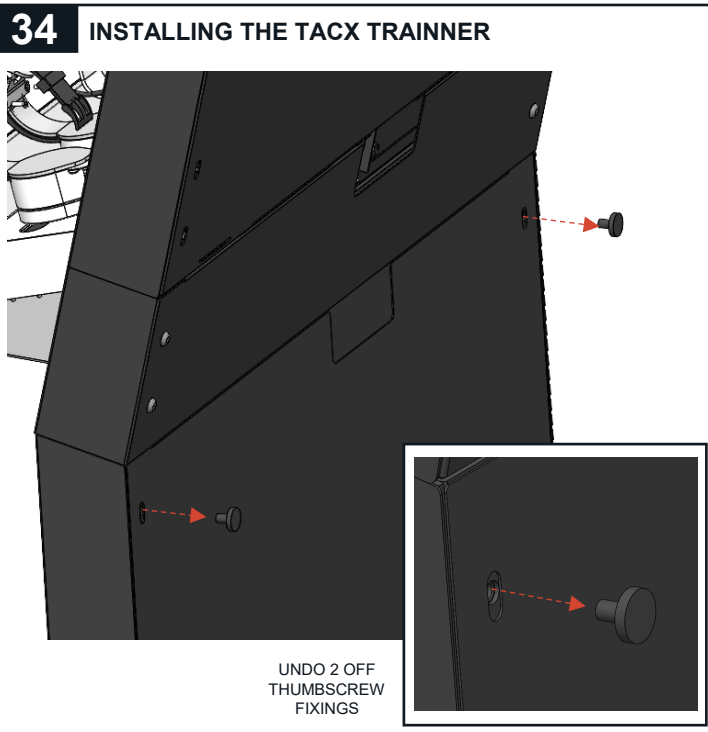
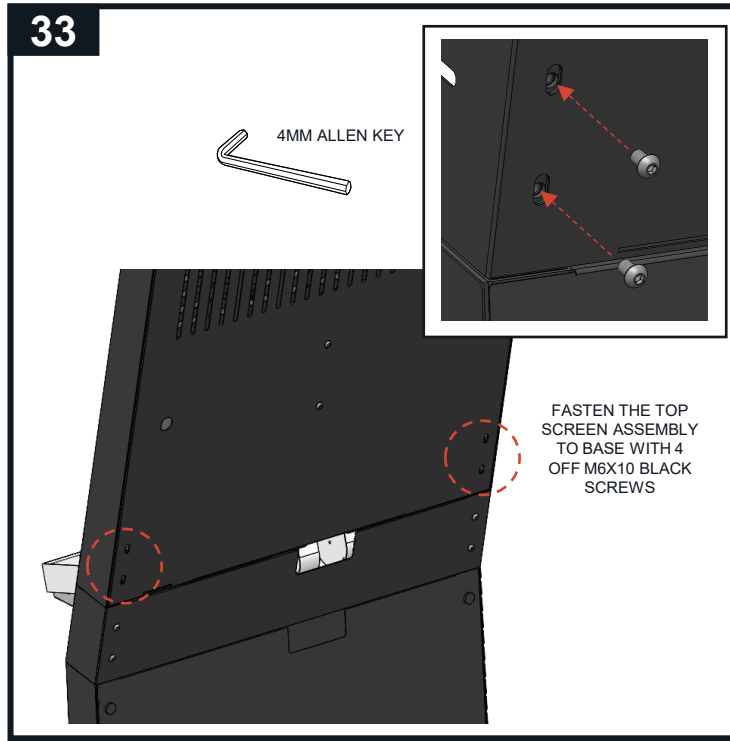
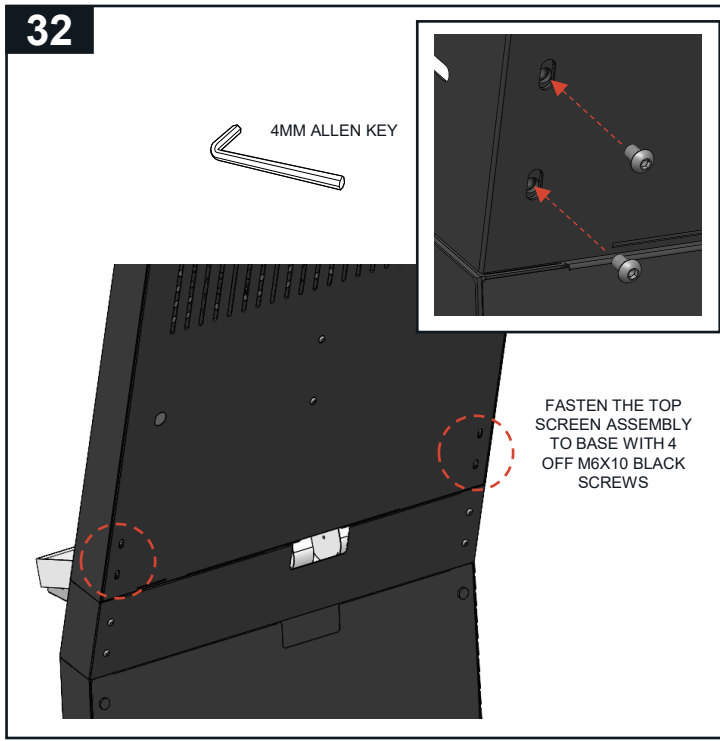
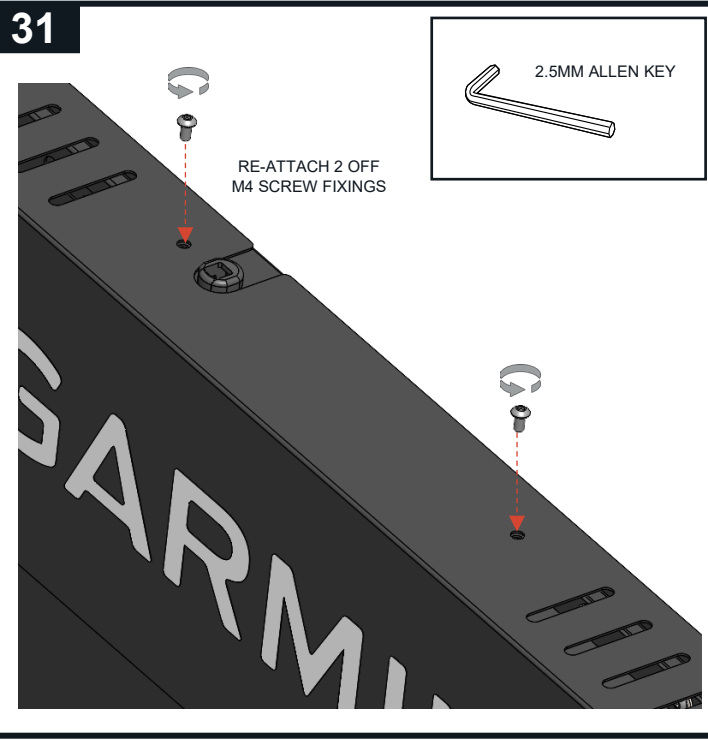


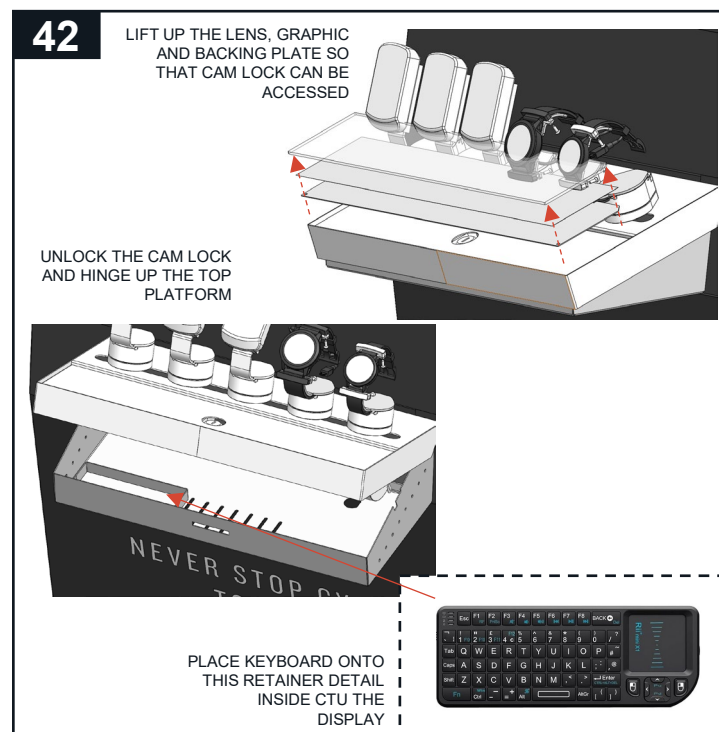
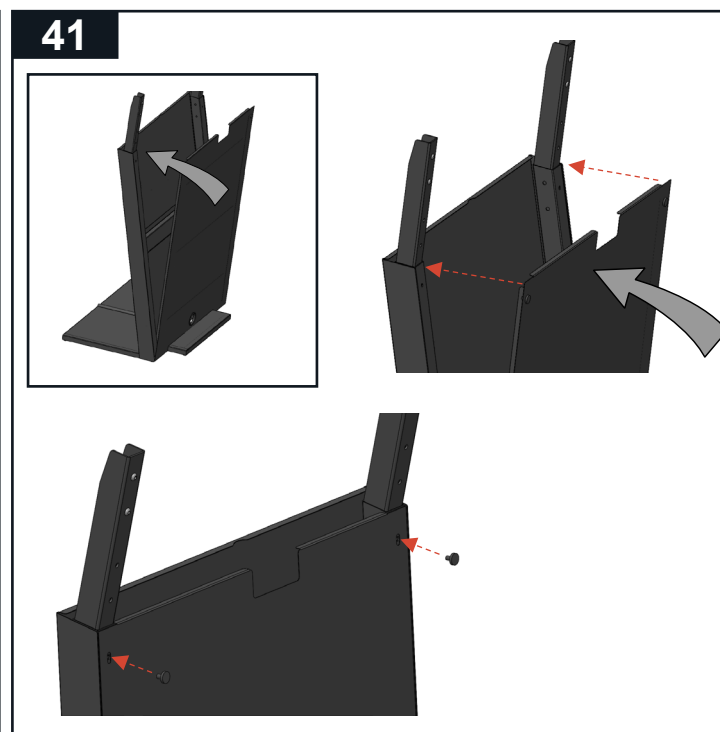
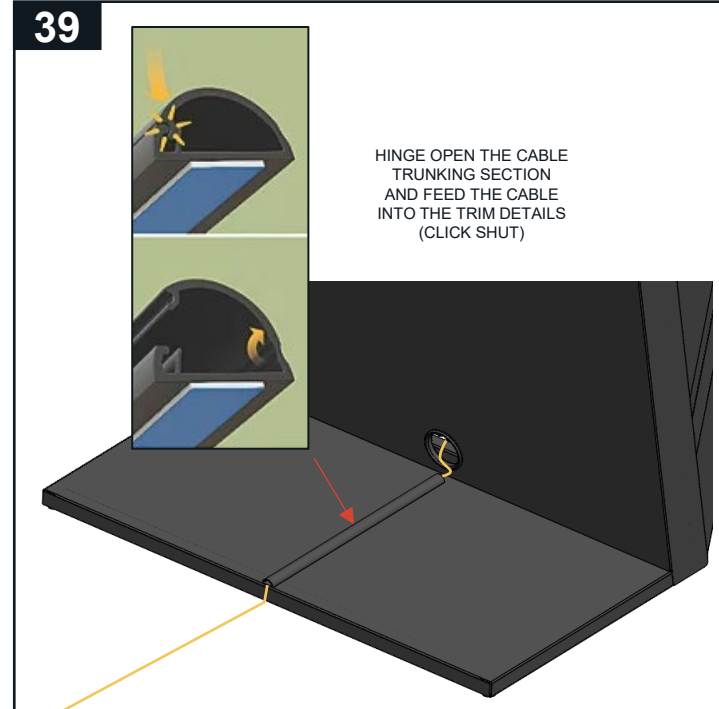
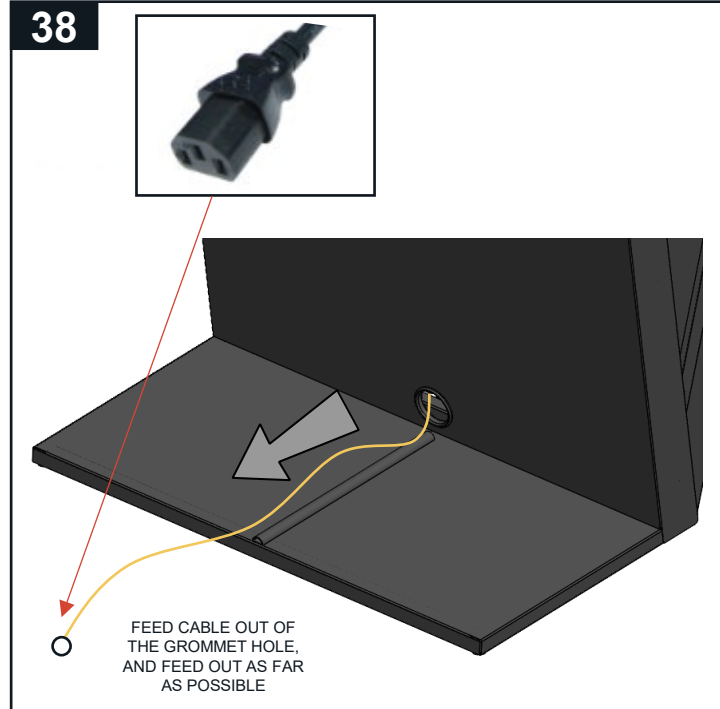
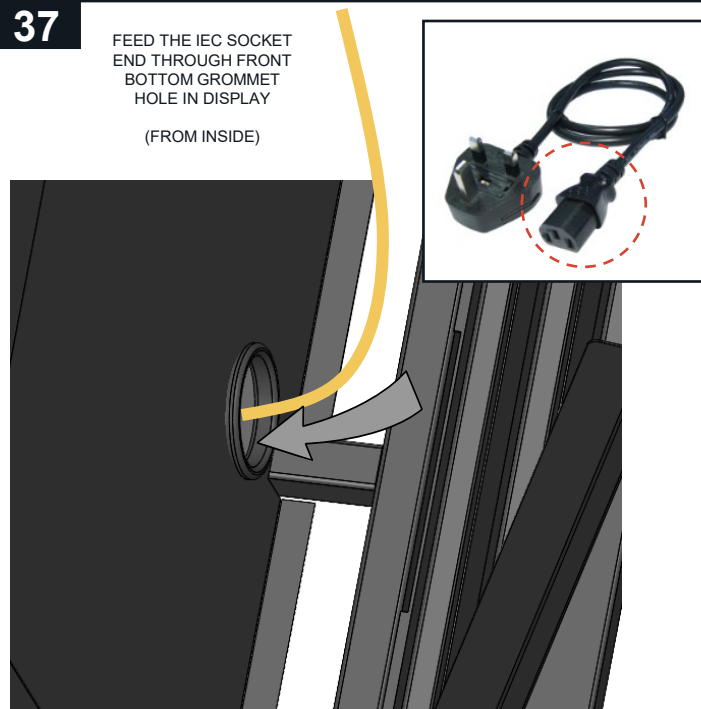
SLIDE BACK ON
FRONT SCREEN
SHROUD



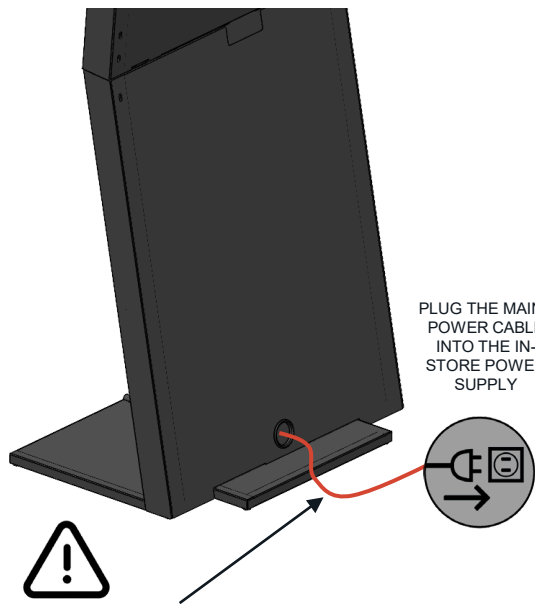
CAREFUL NOT TO
TRAP CABLES

GARMIN®

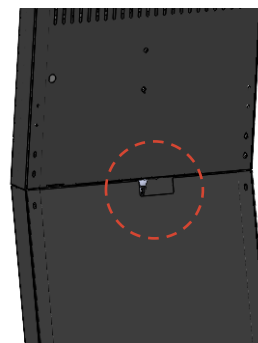
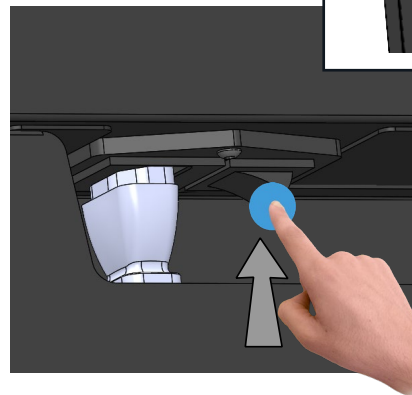




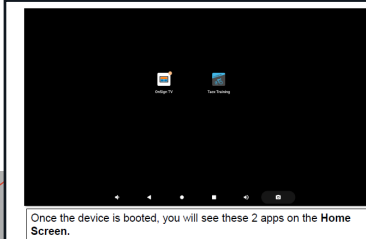
43



44



45



ONCE DISPLAY IS PLUGGED INTO POWER SUPPLY AND SWITCHED ON

(YOU WILL BE PRESENTED WITH THIS SCREEN)

NOW REFER TO DOCUMENT

**GARMIN CCD –
DIGITAL
CONFIGURATION -
ANDROID**