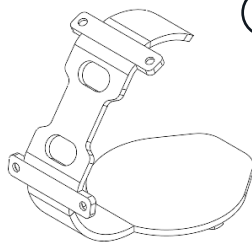


ASSEMBLY GUIDE

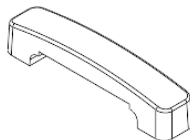
TOOLS REQUIRED – NOT SUPPLIED

SECURITY
TORX X10

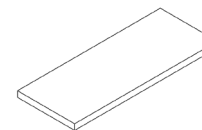
Parts



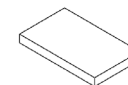
Ⓐ x1



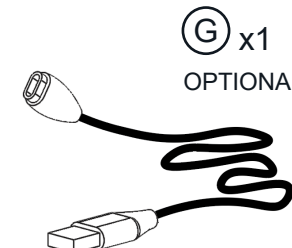
Ⓑ x2

Ⓒ x4
M3x6 SECURITY
SCREWⒹ x4
M3x10 SECURITY
SCREW

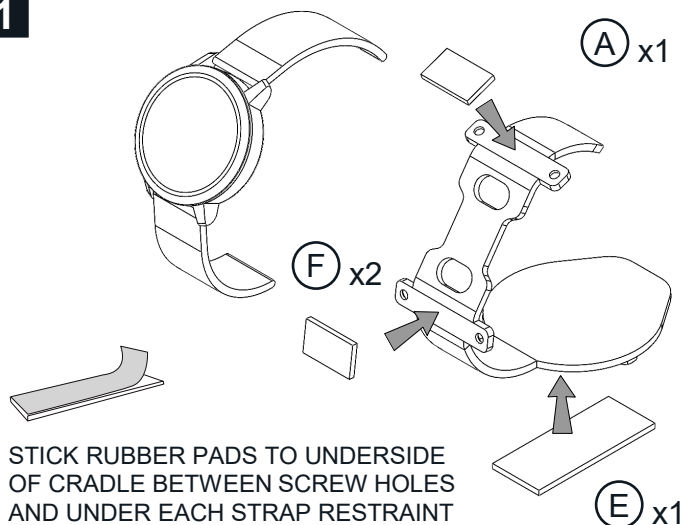
Ⓔ x1



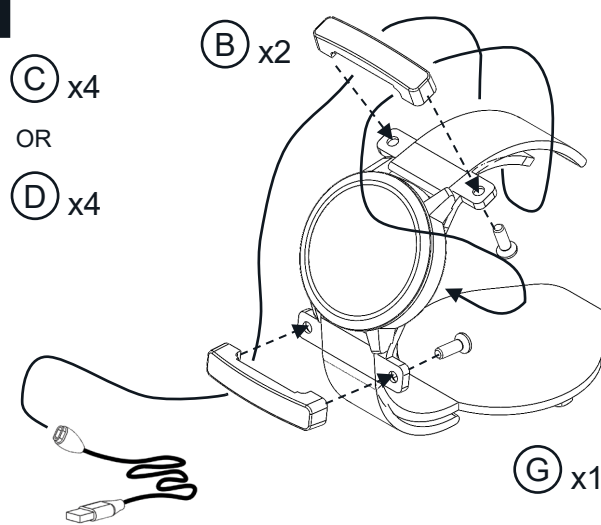
Ⓕ x2

Ⓖ x1
OPTIONAL

1



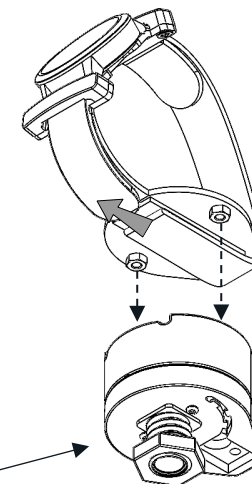
2



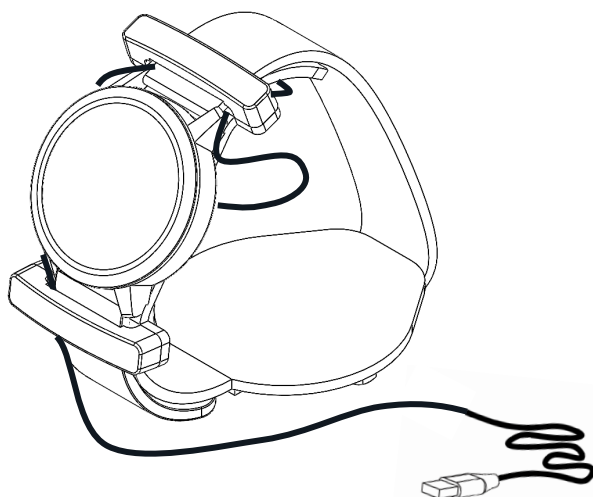
3

ENSURE WATCH
STRAP IS TUCKED
UNDER CRADLE
WHEN ATTACHING TO
SECURITY MOUNT

REF. ONLY



4



ASSETS PAGE – DELETE BEFORE ISSUING OR PRINTING

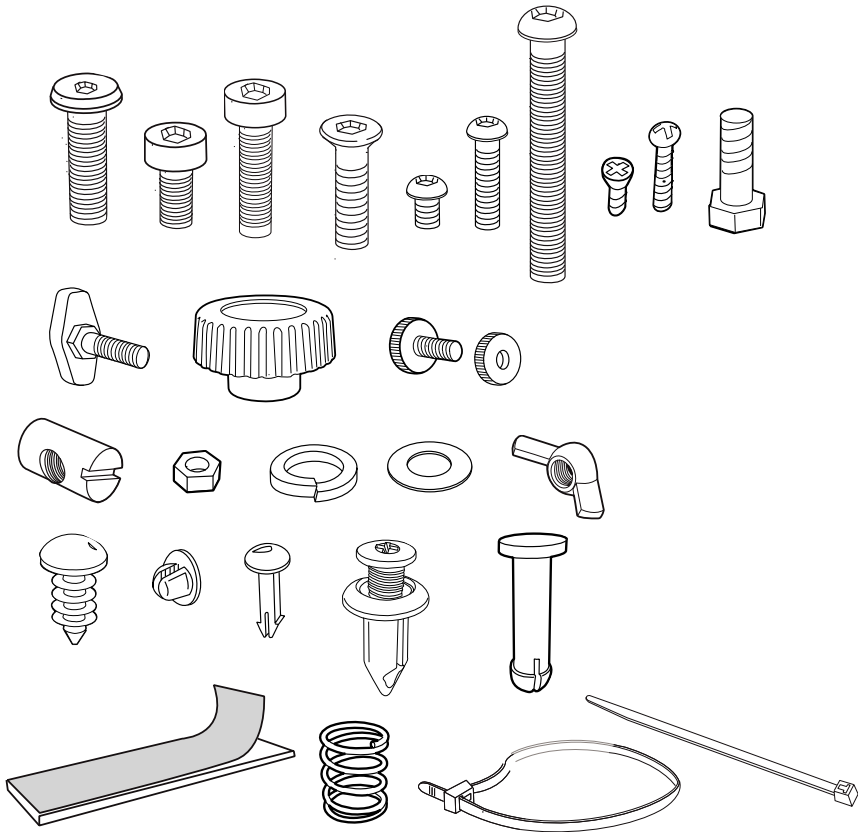
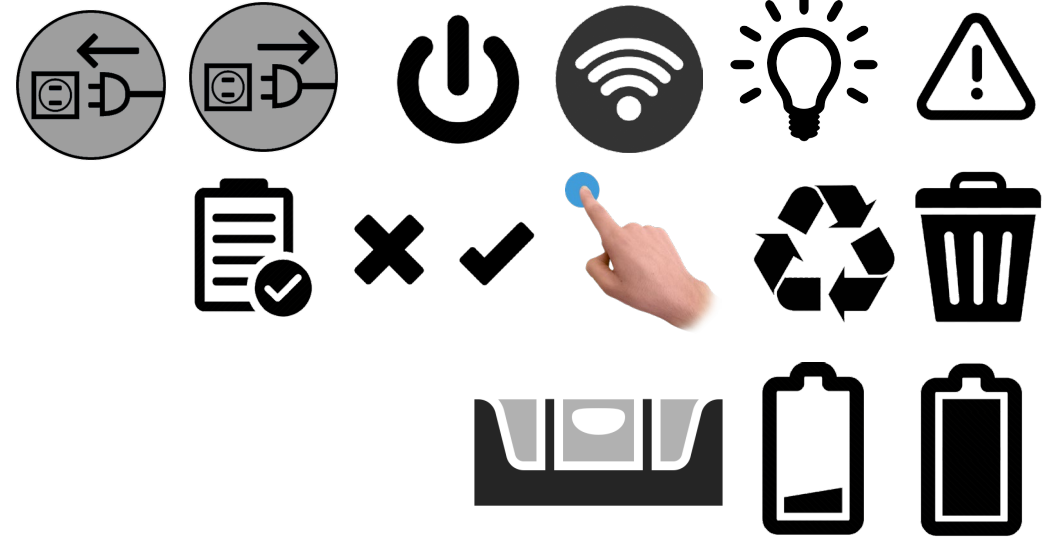
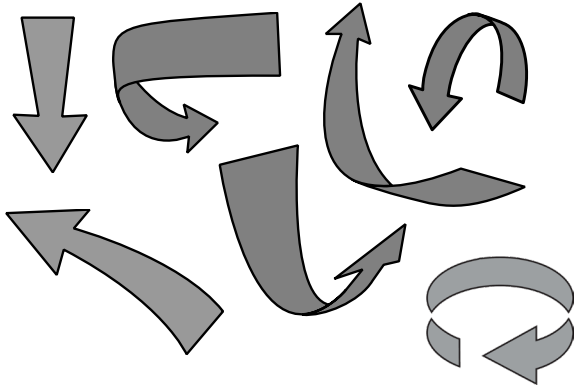
Ⓐ x#

Ⓐ

1



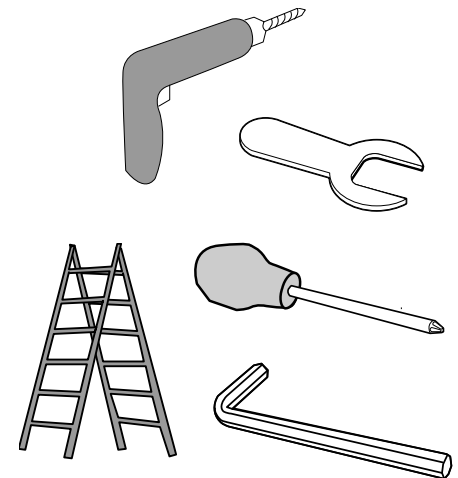
Notes



Do NOT use chemical based cleaning products or abrasive cloth's & sponges



Only use soapy warm water and a soft cotton cloth when cleaning the display



GARMIN®