

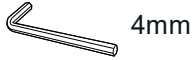
**GARMIN**

1st GEN CTU 400 + 2nd GEN  
800 14 SCREEN HEADER

P11274 | FEB 2025

## ASSEMBLY DIAGRAM

Tools Required - Supplied

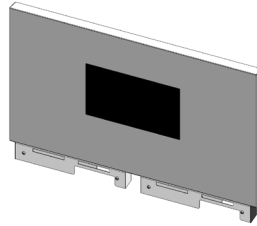


### Parts

(A) X2  
400 CTU



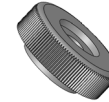
(B) X1  
800 BACK PANEL



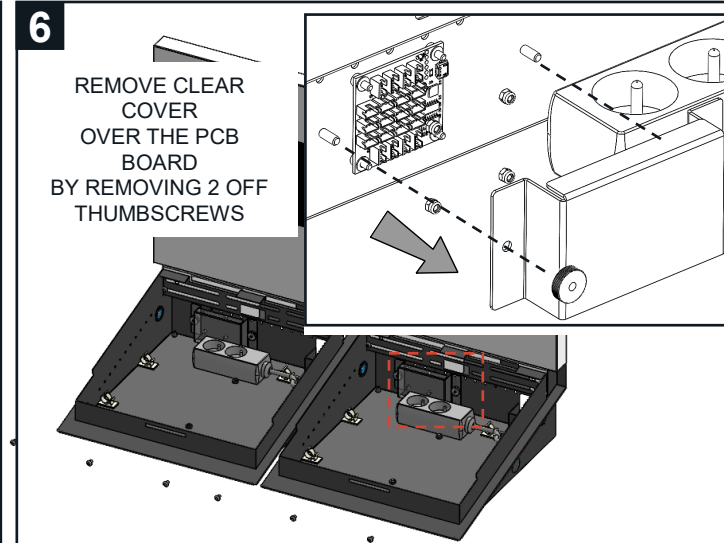
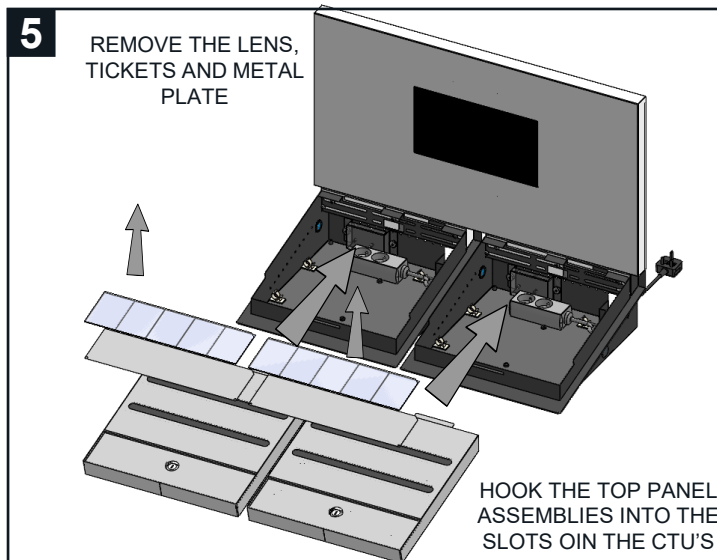
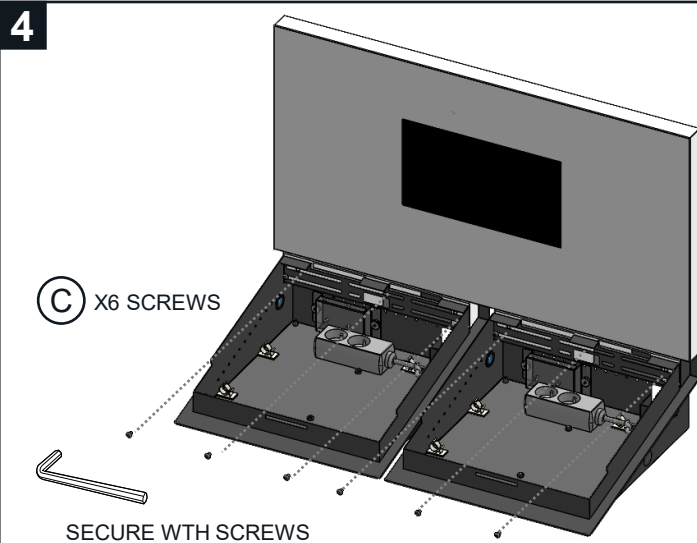
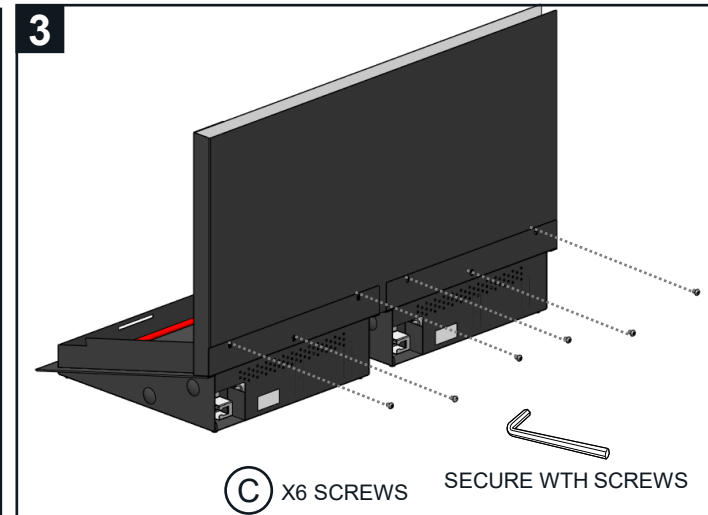
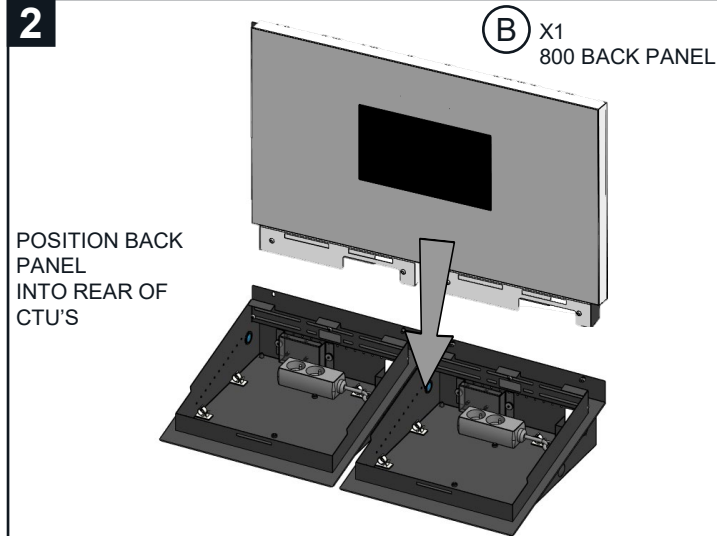
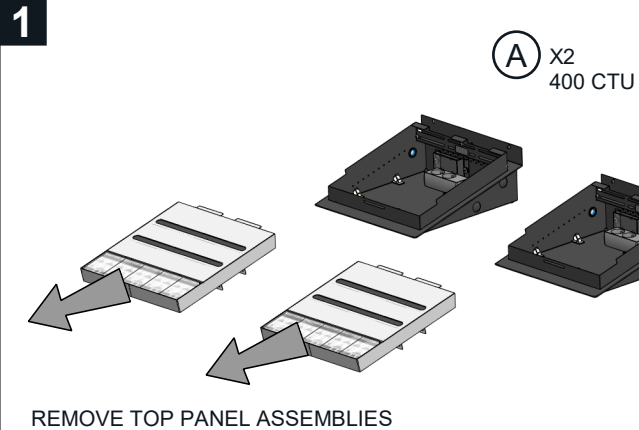
(C) X12  
SCREWS



(D) X3  
THUMB  
NUTS

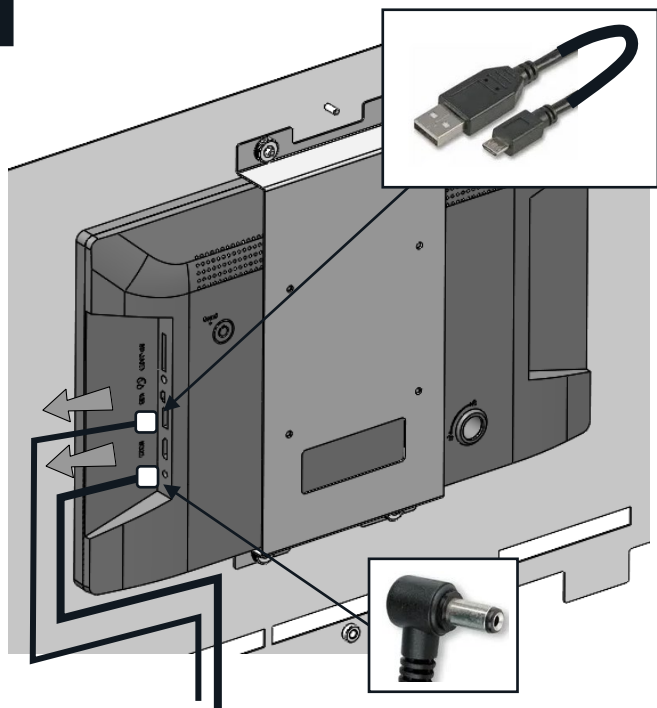


(E) X1



**GARMIN**

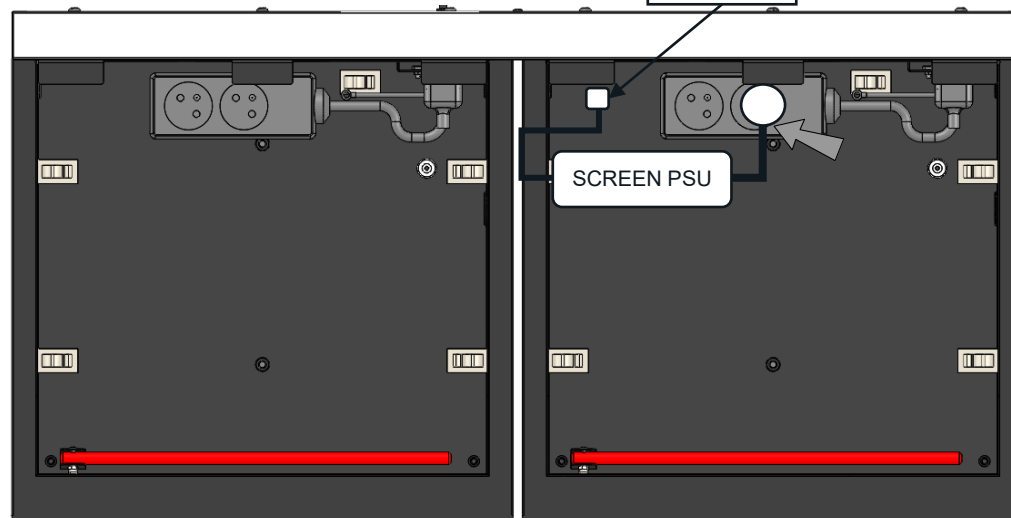
7



IF THE POWER  
CONNECTOR AND USB  
ARE ALREADY FITTED  
INTO THE SCREEN THEN  
UNPLUG SO THAT THE  
CABLE CAN BE  
THREADED THROUGH  
METALWORK  
BEFORE RE-ATTACHING

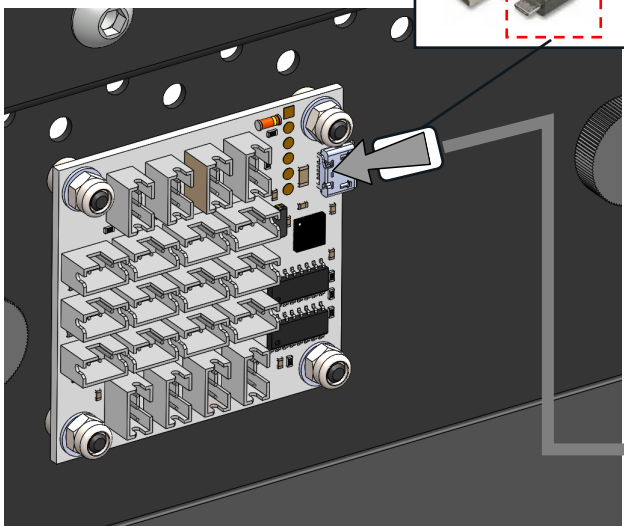
8

PLUG SCREEN POWER  
SUPPLY INTO AVAILABLE  
SOCKET IN THE 600 CTU  
BASE

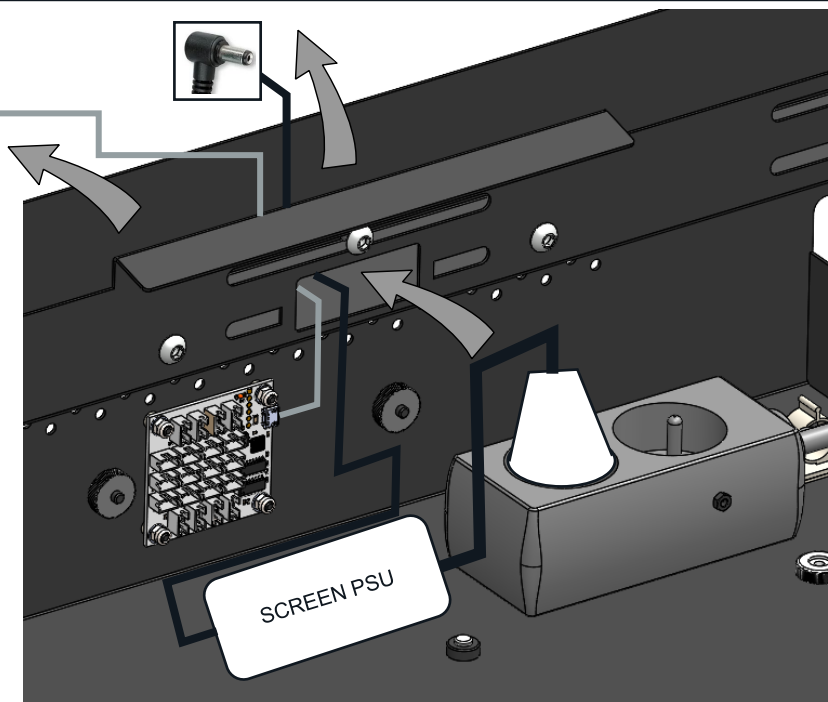


9

PLUG MICRO USB END  
INTO BOARD  
(AND THEN CAREFULLY  
REPLACE THE CLEAR  
COVER)

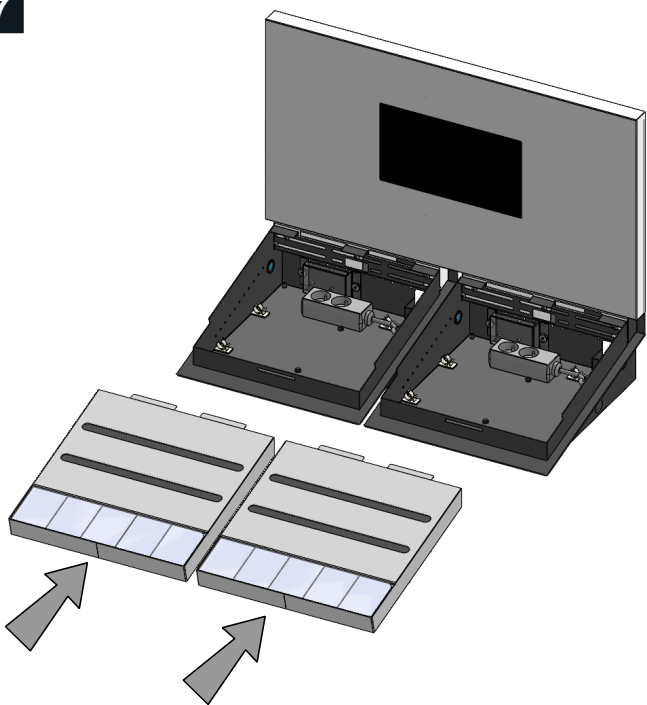


10

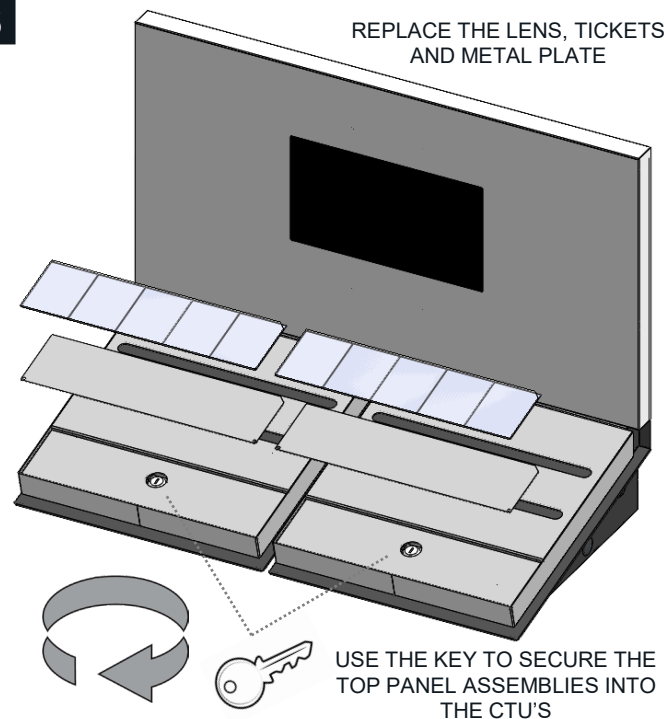


FEED BOTH THE SCREEN  
POWER CONNECTOR AND  
USB THROUGH THIS HOLE  
AND OUT THE TOP OF THE  
REAR CHANNEL.

7



8



9

