

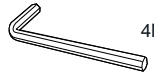
**GARMIN**

CORPORATE DISPLAY

P12674 | 19/11/2024

2 CTU + 2 STANDARD CABINET  
+ ADJOINING SCREEN 800

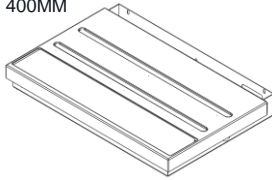
**TOOLS REQUIRED – SUPPLIED**



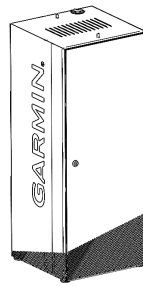
4MM ALLEN KEY

**Parts**

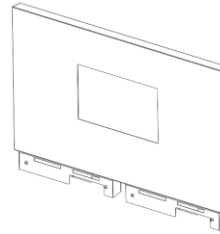
(A) X2  
400MM



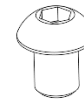
(B) X2  
400MM



(C) X1  
800MM



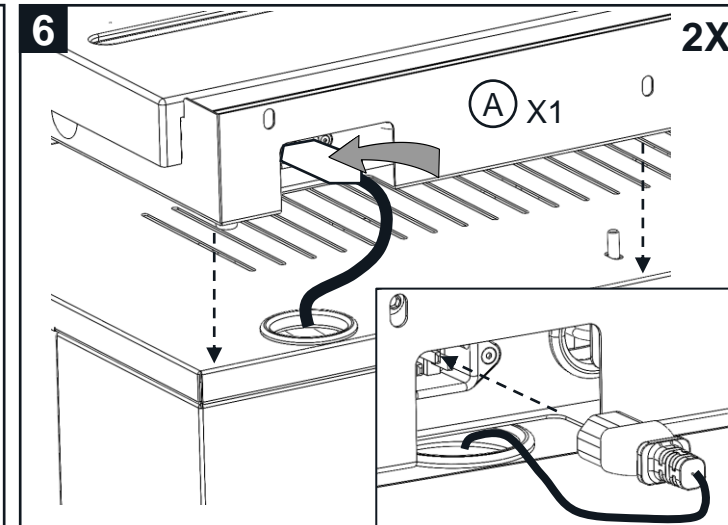
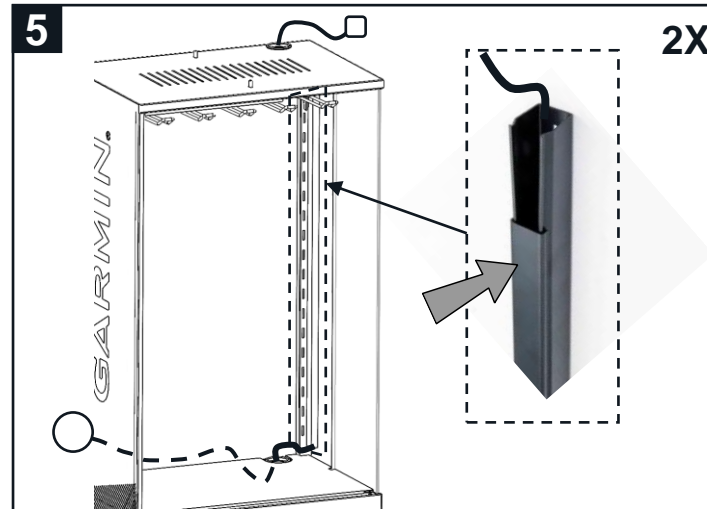
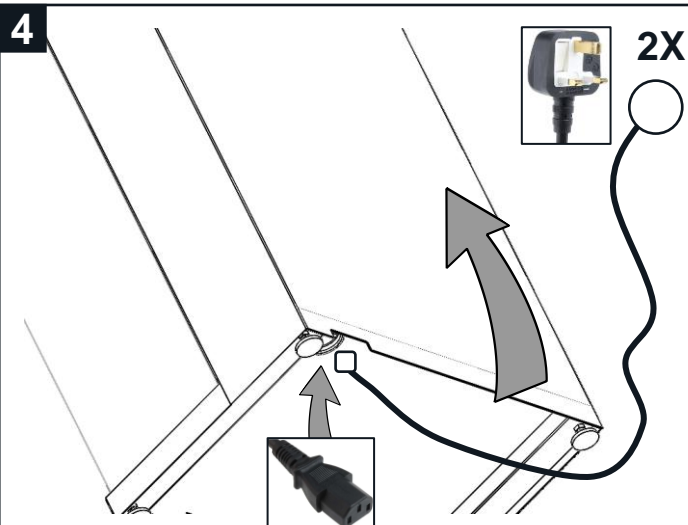
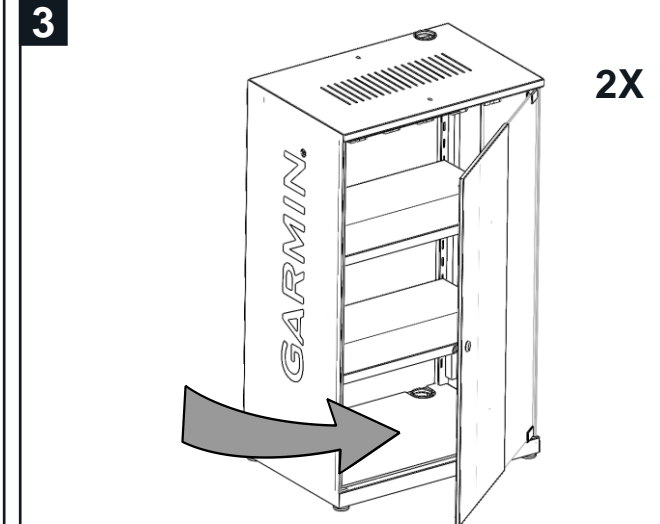
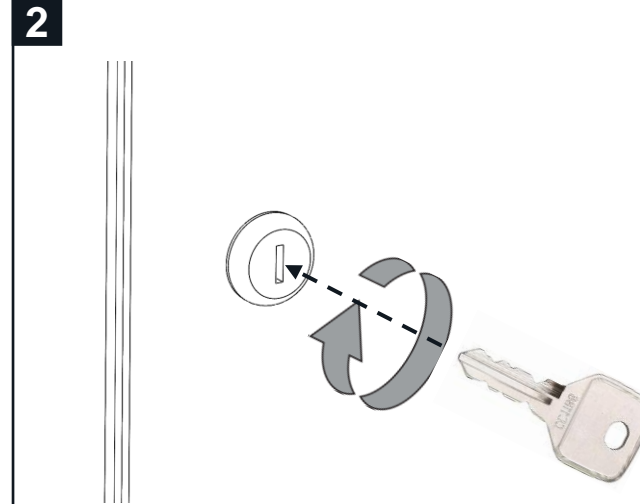
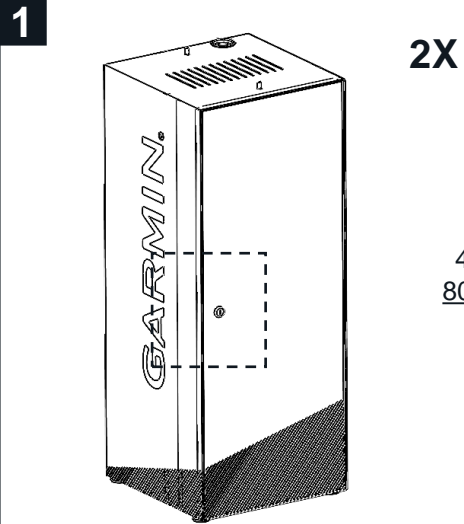
(D) X10  
M6X8MM  
SCREW



(D) X2  
M6X16MM  
SCREW

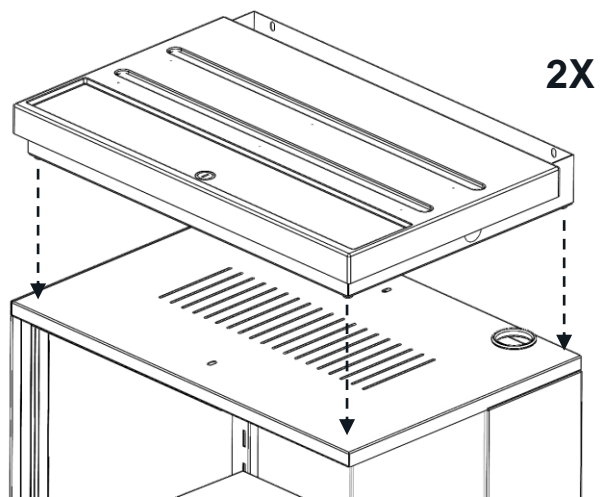


(E) X1

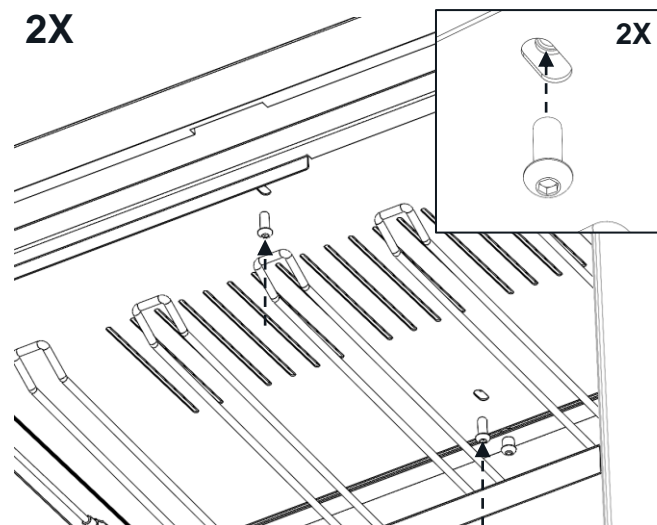


**GARMIN®**

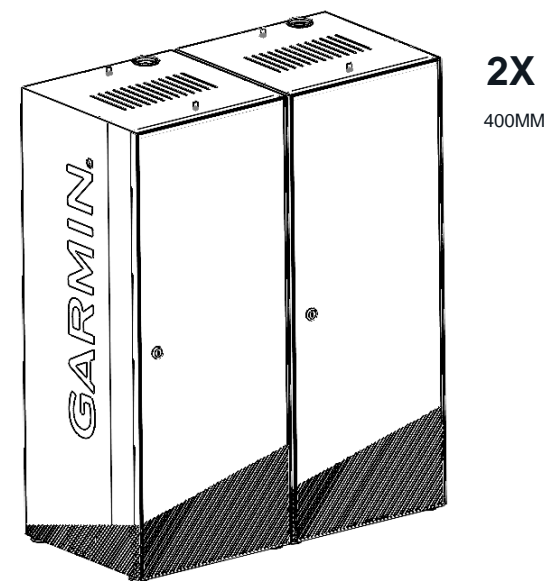
7



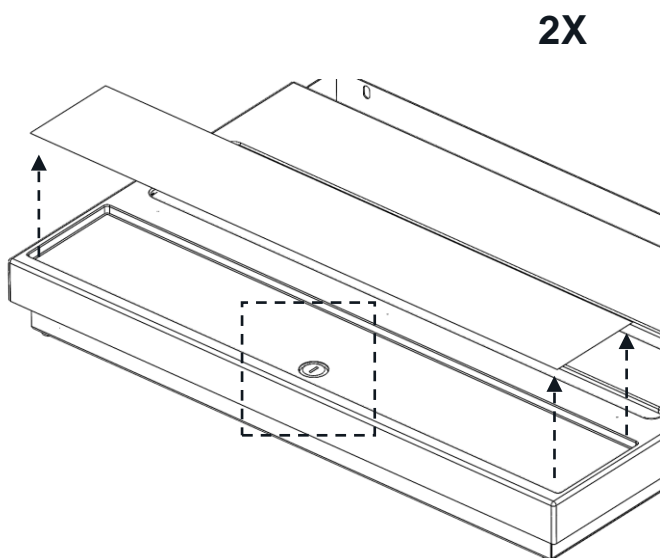
8



9



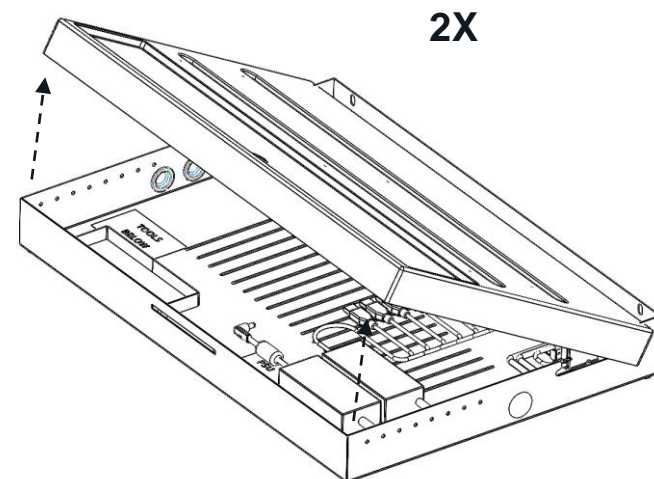
10



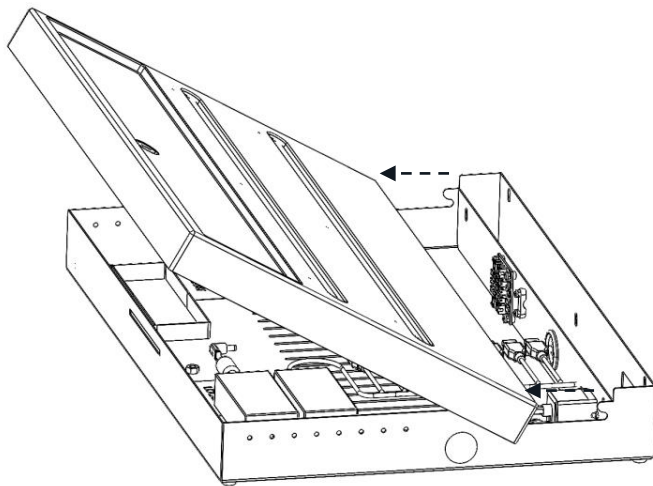
11



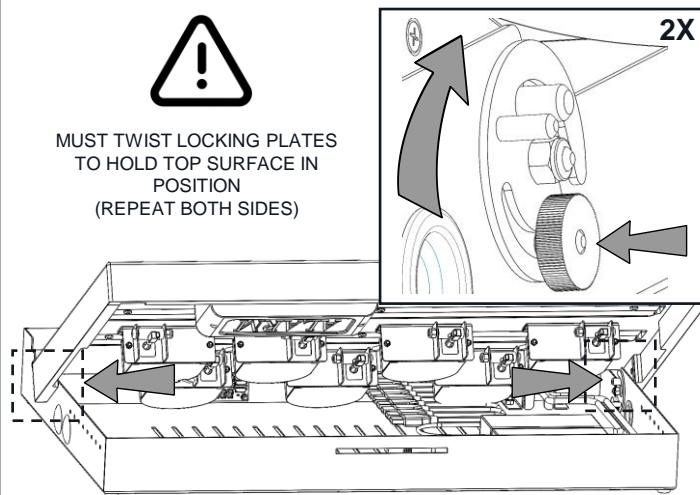
12



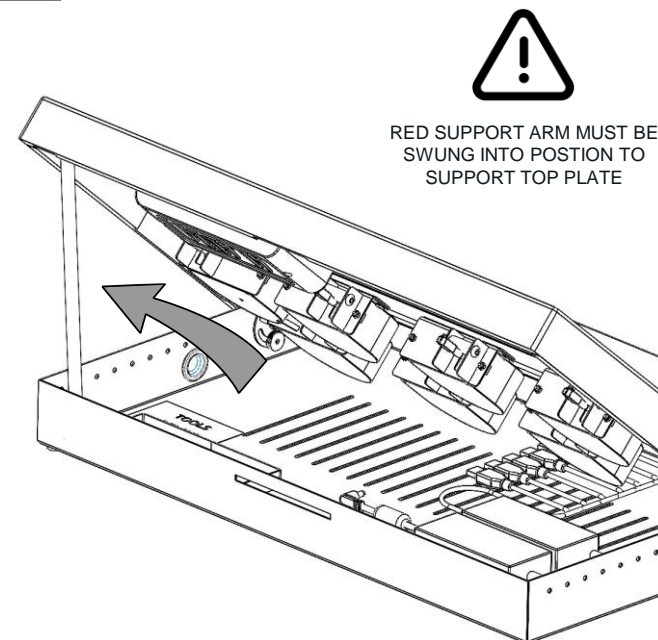
13



14



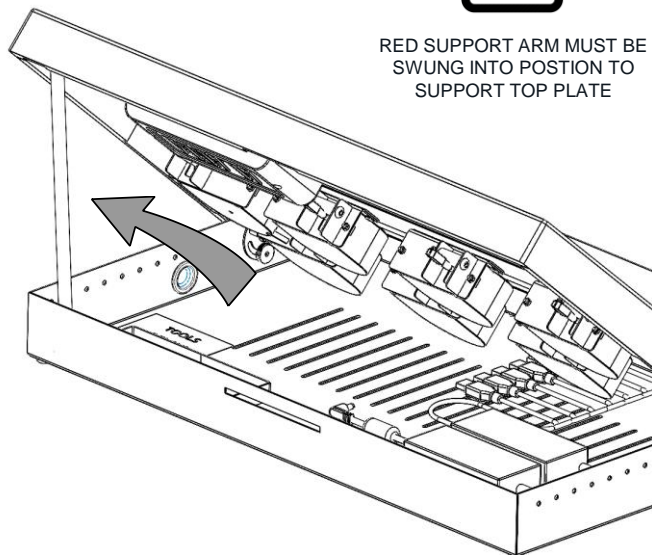
15



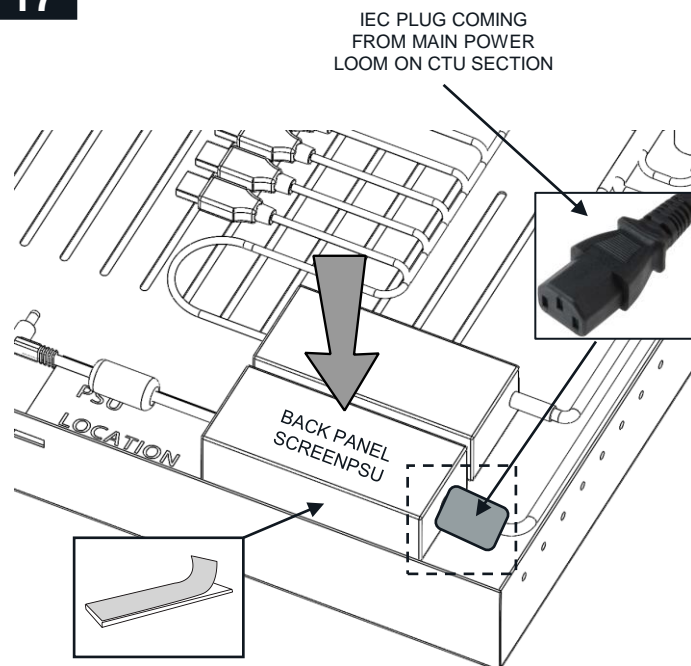
16



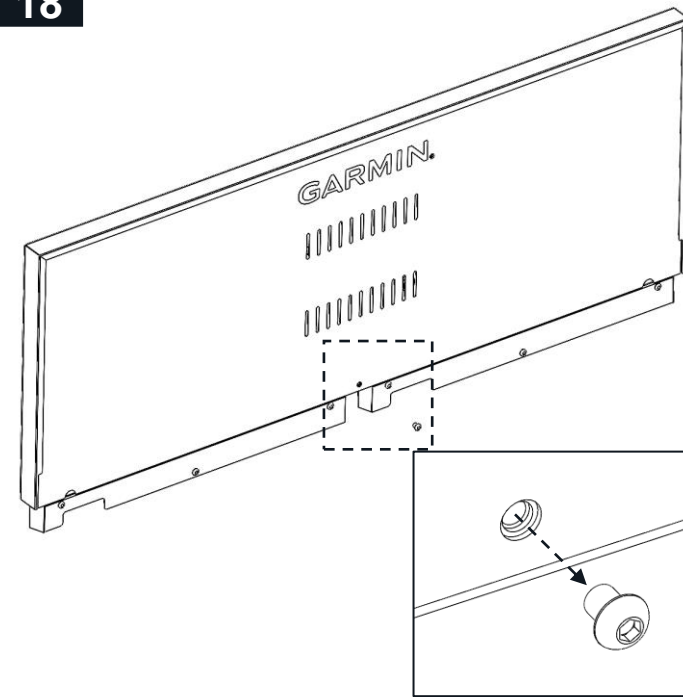
RED SUPPORT ARM MUST BE SWUNG INTO POSITION TO SUPPORT TOP PLATE



17



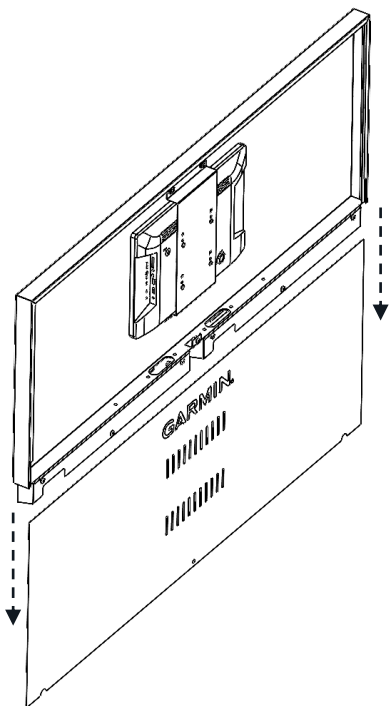
18



**GARMIN**

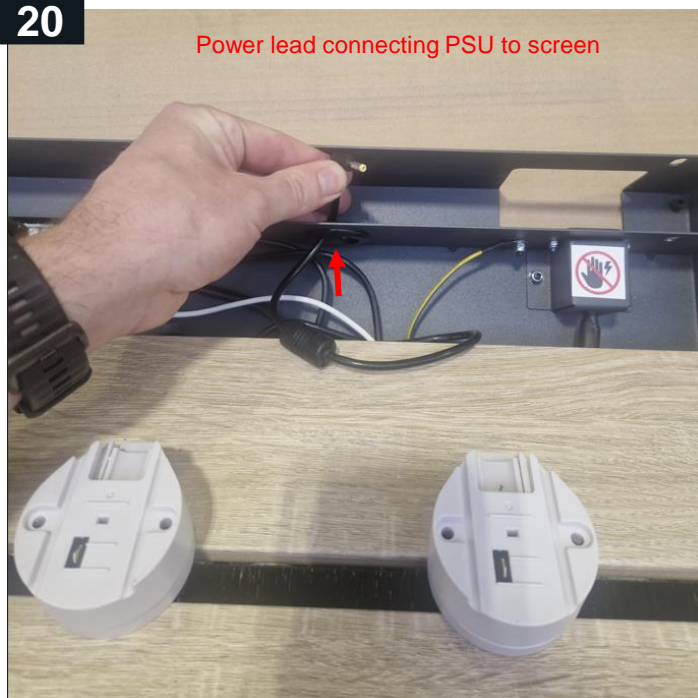


19



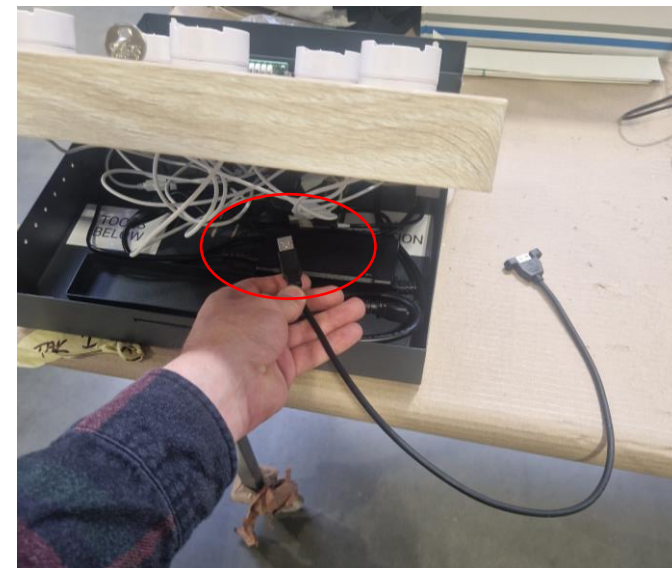
20

Power lead connecting PSU to screen



21

Pass USB through hole in back of CTU as per step 22, and the other end stays loose unconnected in base of CTU as its used for uploading content via USB stick



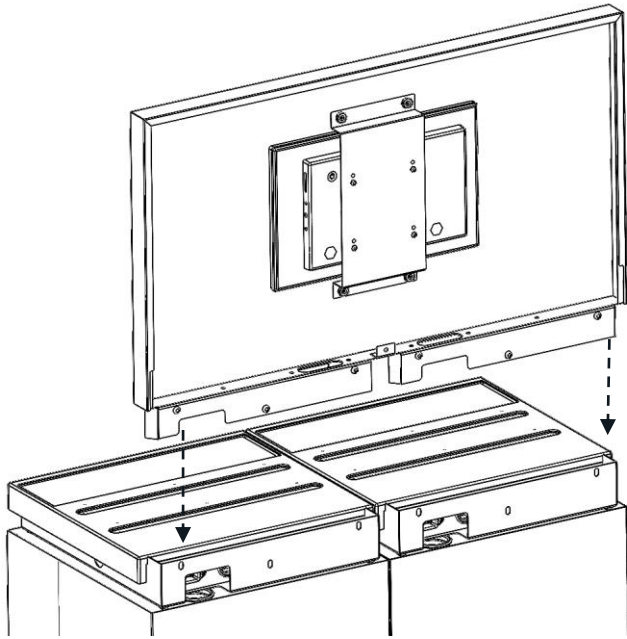
22



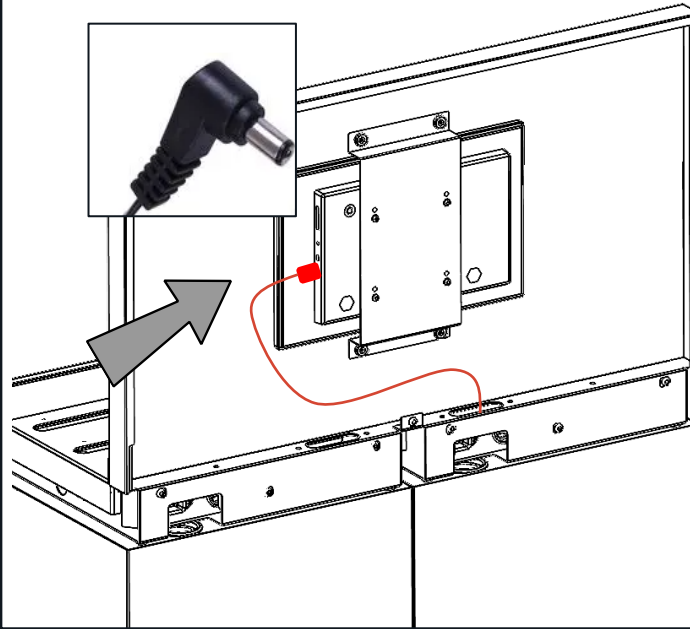
23



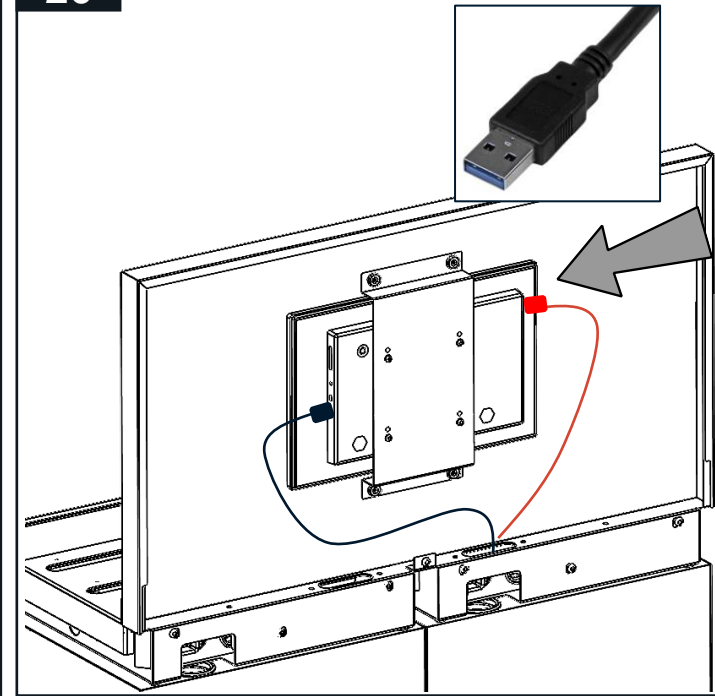
24



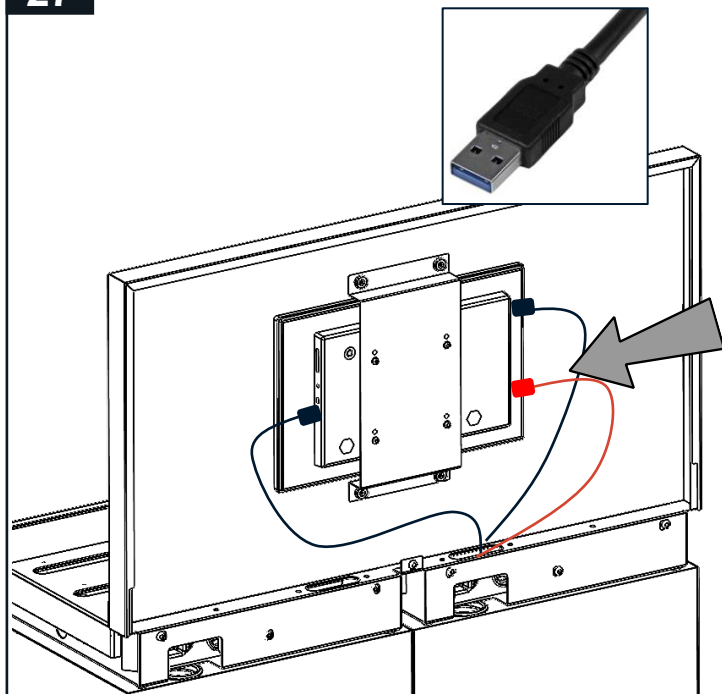
25



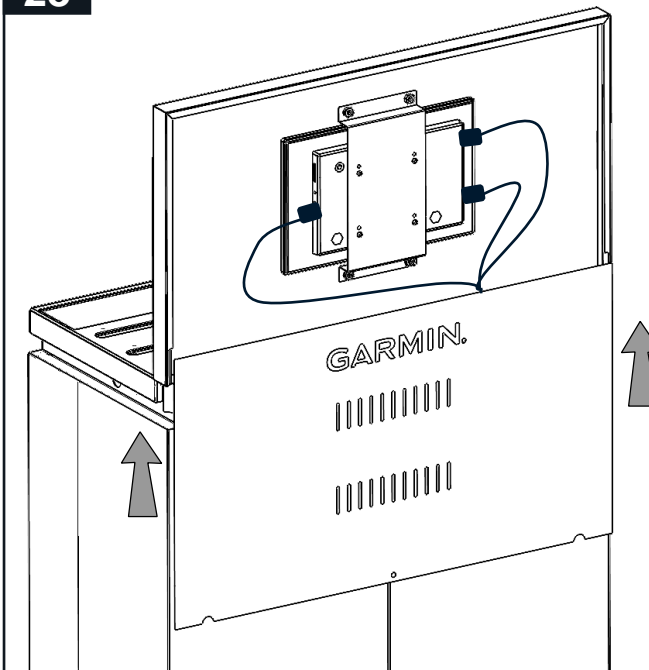
26



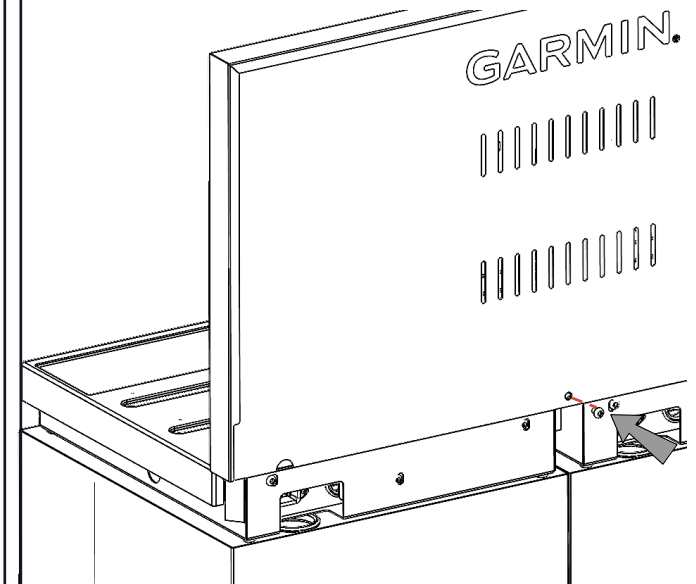
27



28



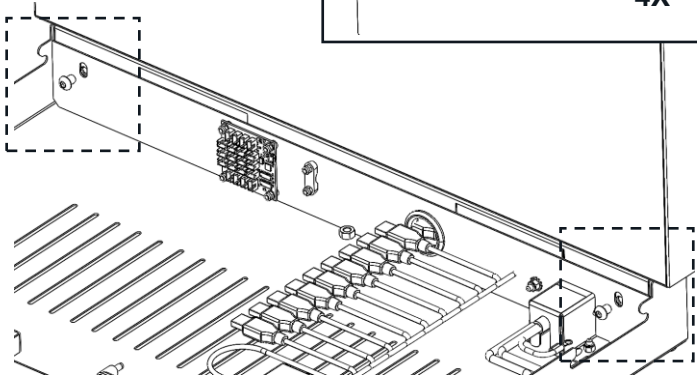
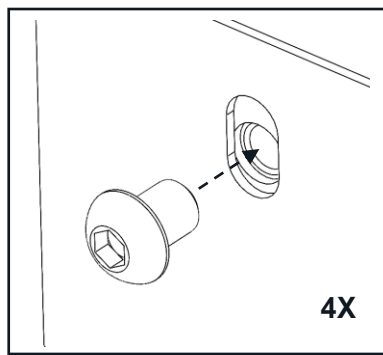
29



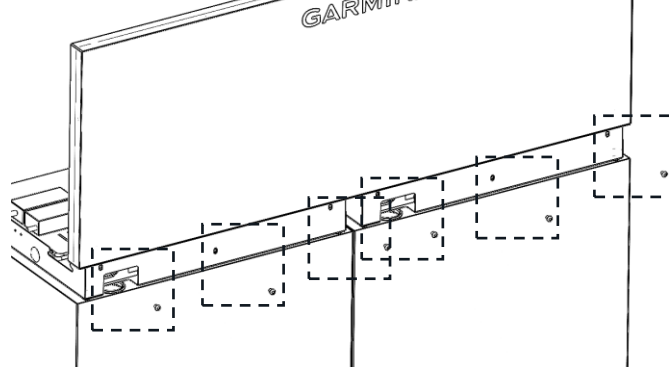
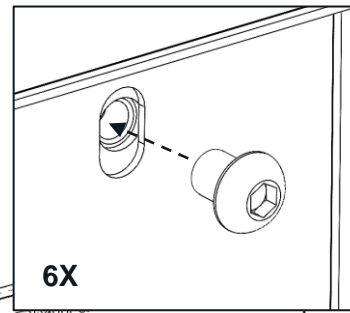
GARMIN®



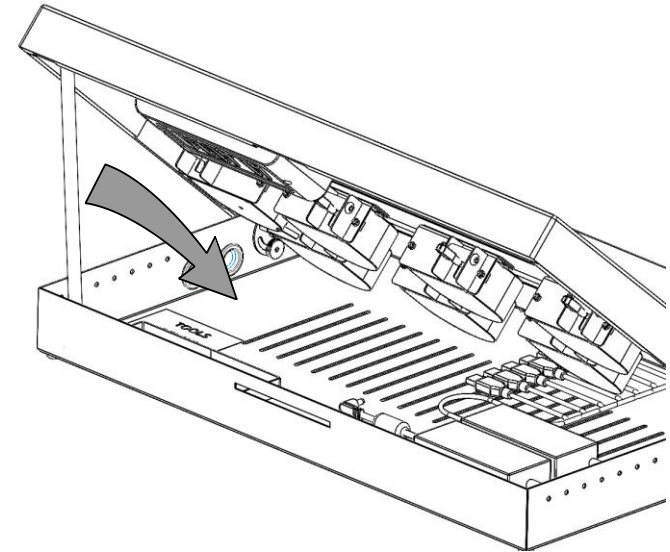
30



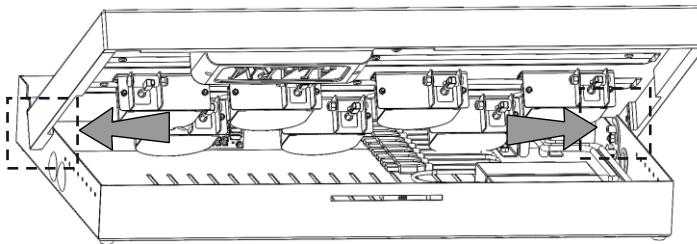
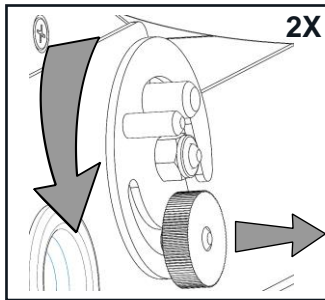
31



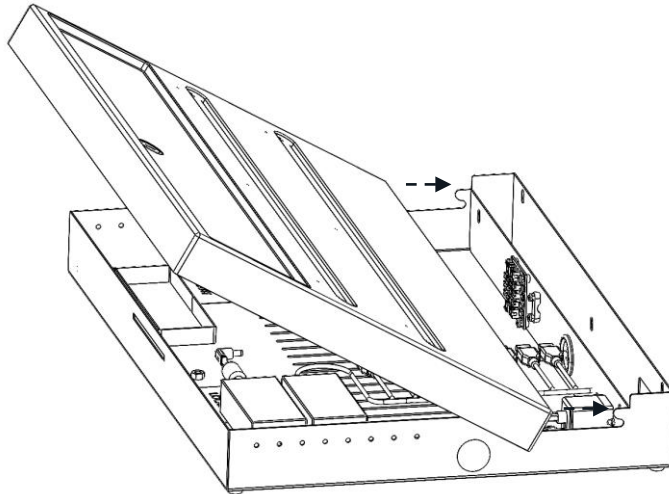
32



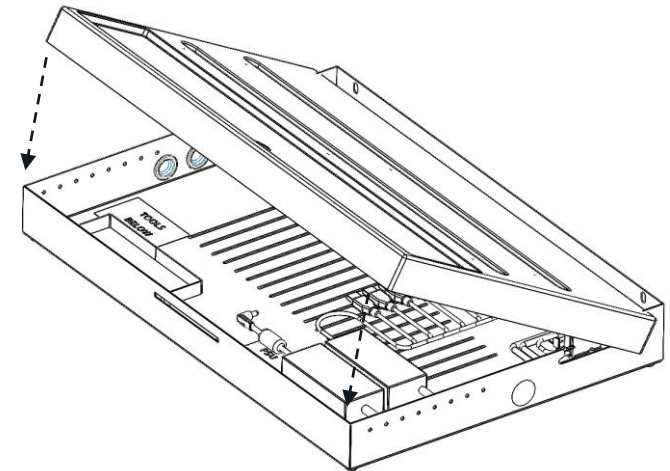
33



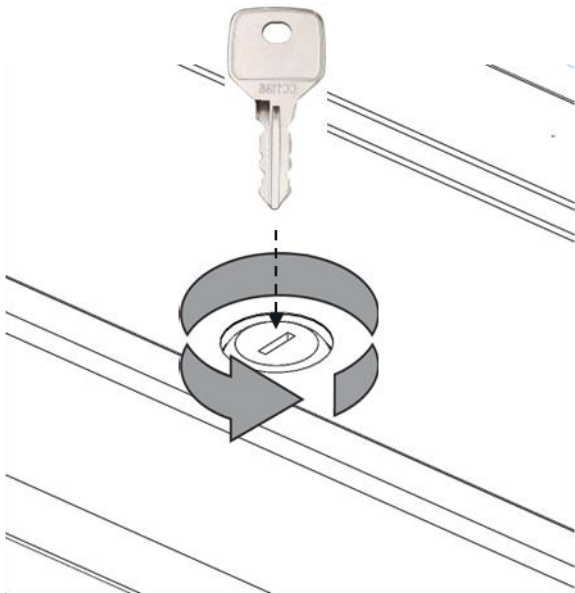
34



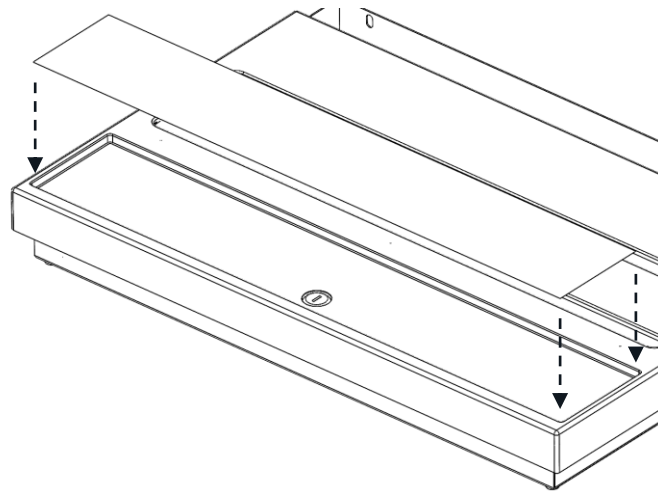
35



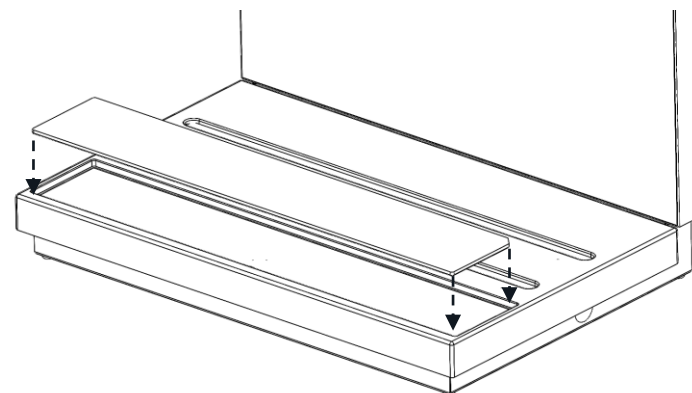
36



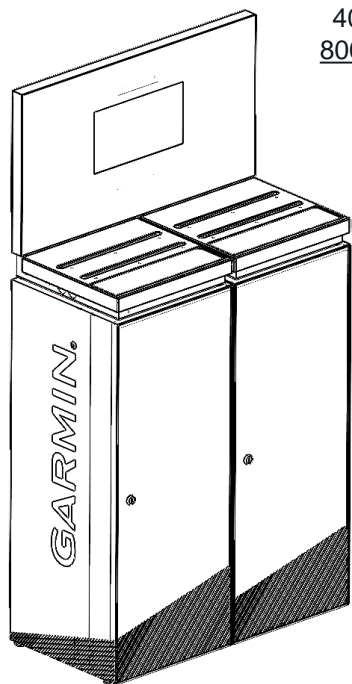
37



38



39



400 + 400 for  
800mm Header

**\*\*IMPORTANT\*\***

**Your displays come loaded with default video content, this is not lift and learn.  
Lift and learn content must be loaded locally to match your store planogram.**

**This guide is for loading content when the screens are not connected to the internet  
or our Connie content management platform**



# Content Loading

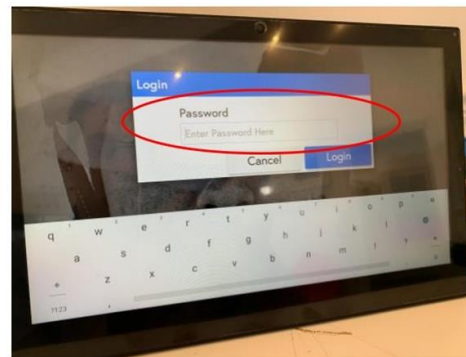
1. Open the base of your unit & locate the content USB port.
2. Ensure display is turned on and the screen is working.
3. Insert USB stick into USB port
4. Follow these instructions:



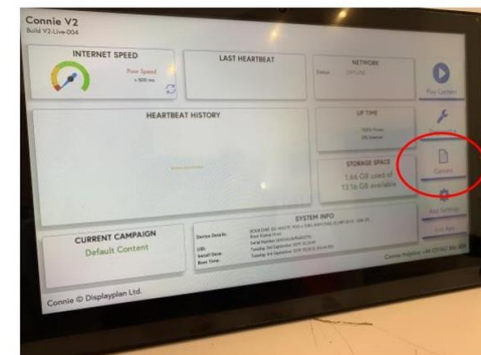
Insert USB into port inside base of unit or side of screen



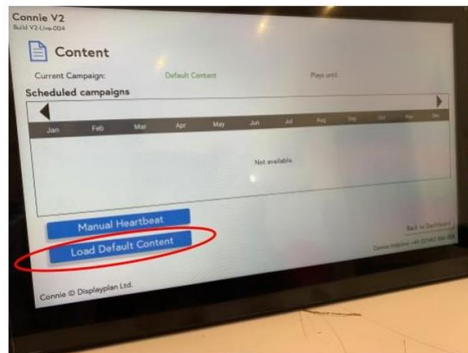
Tap 5 times top right of screen



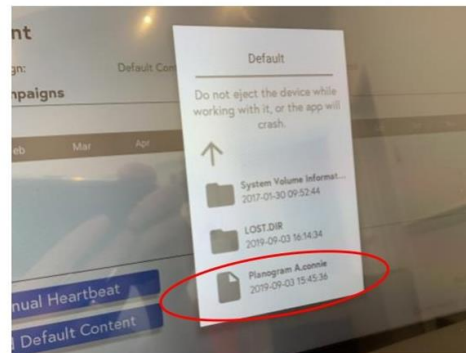
Enter password - display



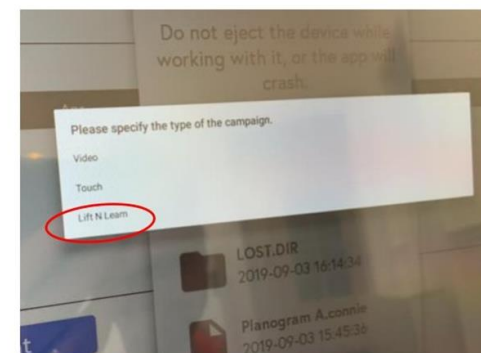
Click content



Click load default content



Find the .connie file you have loaded to the USB stick



Click lift n learn

# Content Test

## Check everything has been loaded correctly

1. Reboot the screen by un-plugging at the mains , check the app loads and idle video plays
2. Lift one product, check the content changes to correctly match the product lifted
3. Repeat with all products
4. Lift two products check the correct compare images display
5. Repeat with all products
6. Reboot display again by un-plugging at the mains, allow to re-boot and then process is complete

