

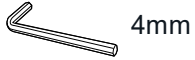
GARMIN

MID UNITS 1000 ADJOINING
BACK PANEL

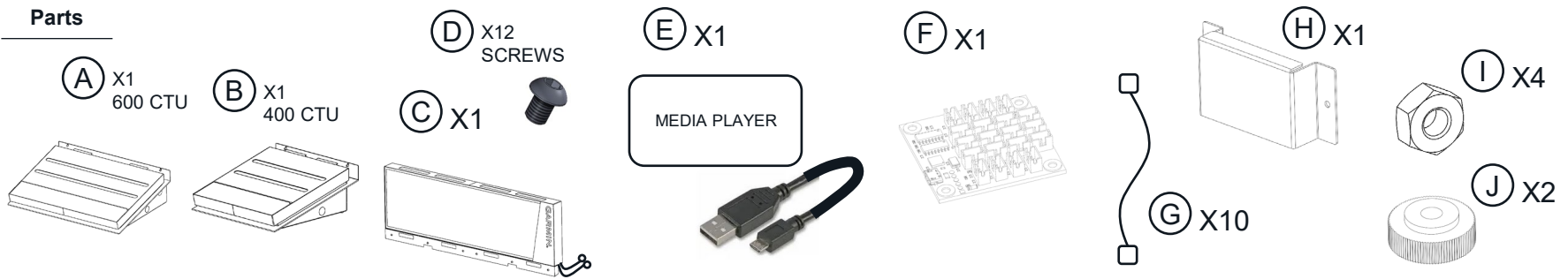
P11274 July 2024

ASSEMBLY DIAGRAM

Tools Required - Supplied



Parts



1

(A) X1
600 CTU

(B) X1
400 CTU

REMOVE TOP PANEL ASSEMBLIES

2

(C) X1

POSITION BACK PANEL
INTO REAR OF CTU'S

3

(D) X6
SCREWS

SECURE WITH SCREWS

4

(E) X6
SCREWS

SECURE WITH SCREWS

5

FEED HDMI CABLE AND POWER
CABLE FROM SCREEN THROUGH
CUTAWAY AT BACK AND INTO
BASE OF UNIT.

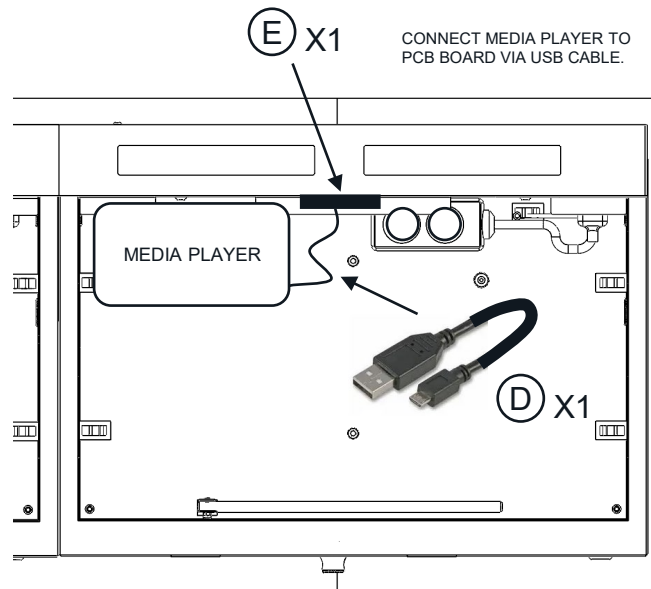
6

MEDIA PLAYER
(F) X1

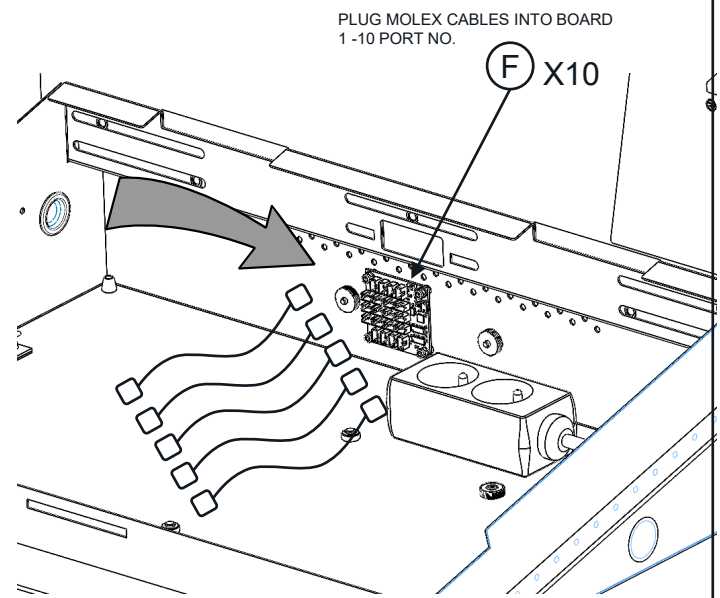
SIT MEDIA PLAYER INTO CTU BASE
TOWARD THE BACK
PLUG HDMI LEAD FROM SCREEN
INTO AVAILABLE HDMI SLOT.

PLUG POWER FOR MEDIA PLAYER
AND SCREEN INTO ONE OF THE
AVAILABLE EXTENSION SOCKETS.

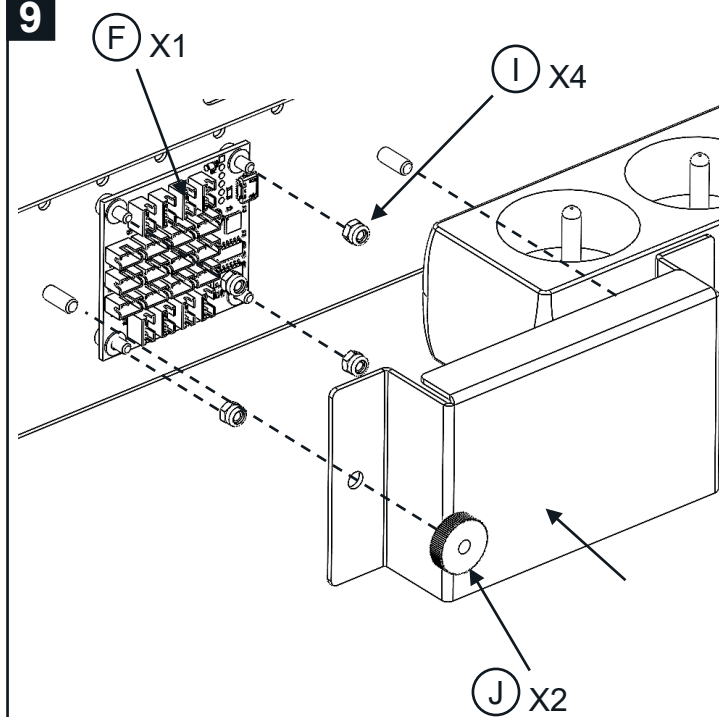
7



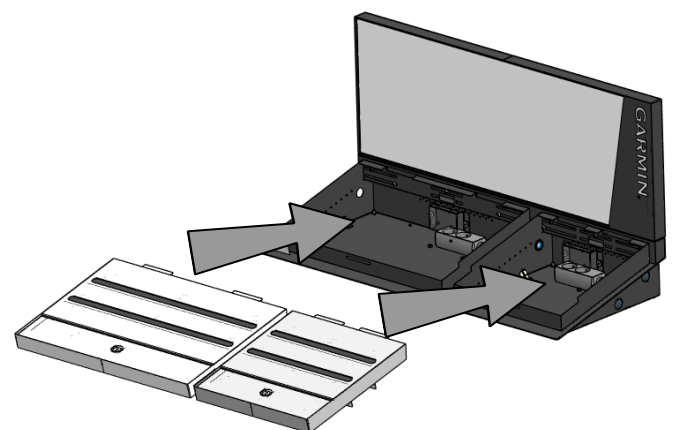
8



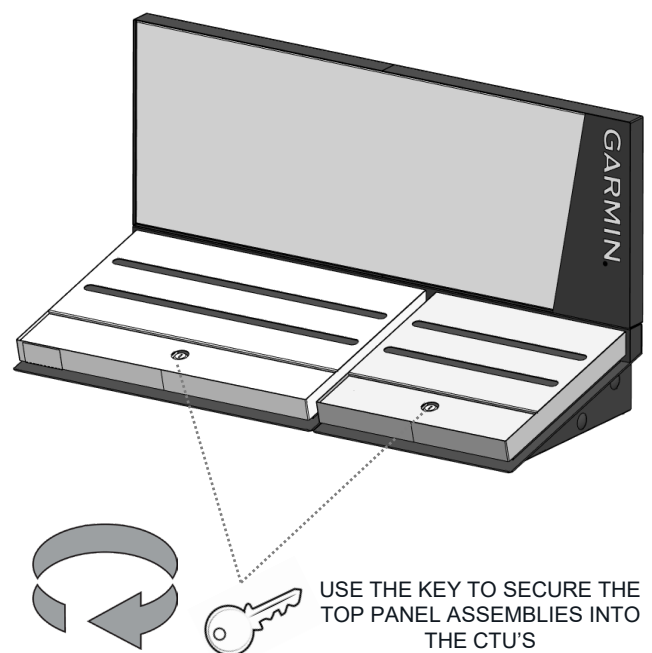
9



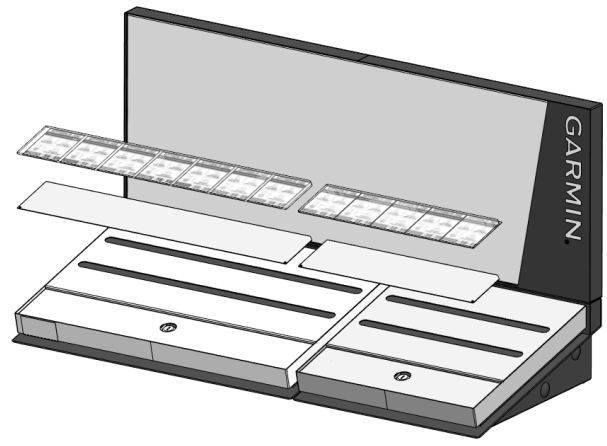
10



11



12



REPLACE THE LENS, TICKETS AND METAL PLATE