


GARMIN
CORPORATE DISPLAY
P12674 | 19/11/2024
CTU + SCREEN HEADER +
PLATINIUM

TOOLS REQUIRED – SUPPLIED

4MM ALLEN KEY

Parts

(A) X1
400MM

(B) X1
400MM

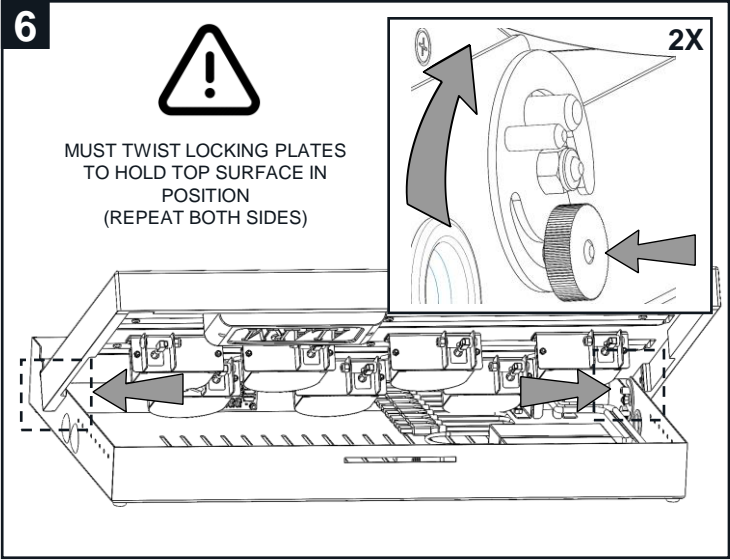
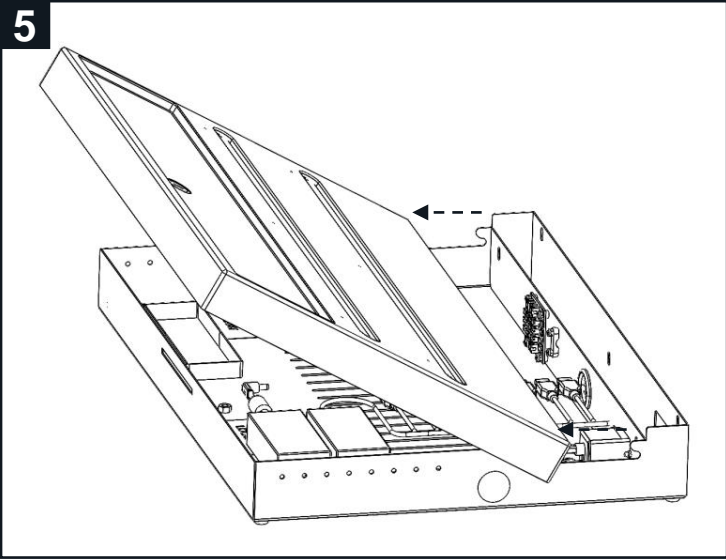
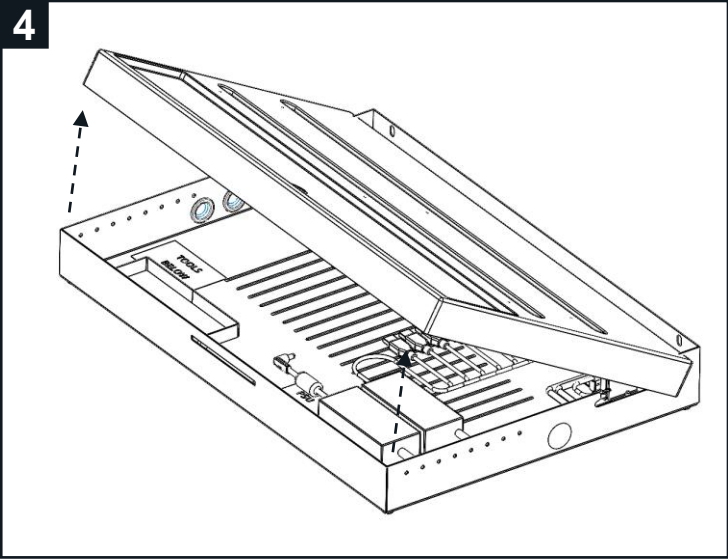
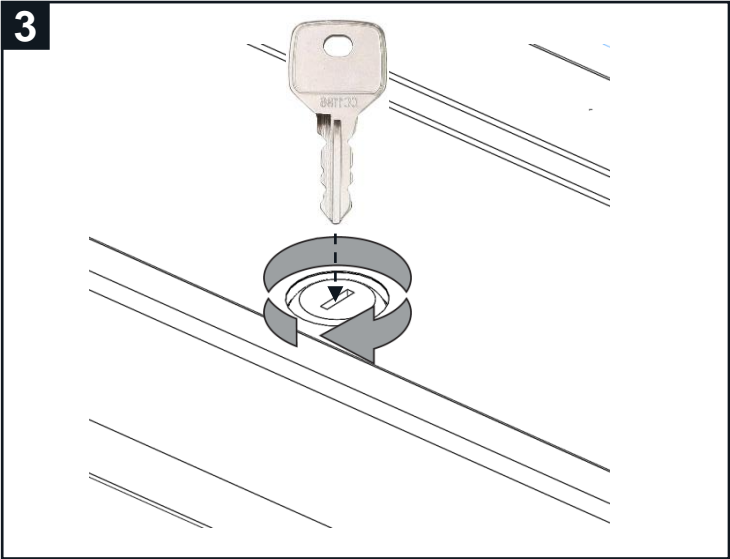
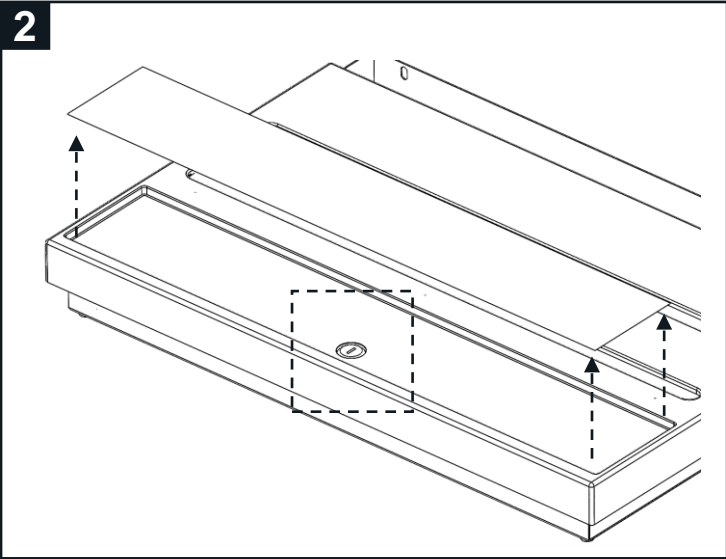
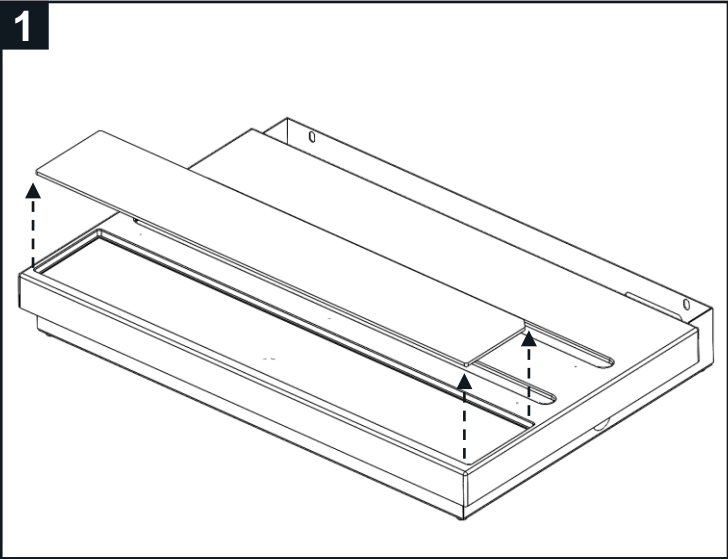
(B) X5
PLATINIUM
SECURITY
POSTS
(PRE-FITTED)

(C) X1

(E) X5
M6X8MM
SCREW

(F) X1
Remote Control (to work with
Access Control Remote Module)

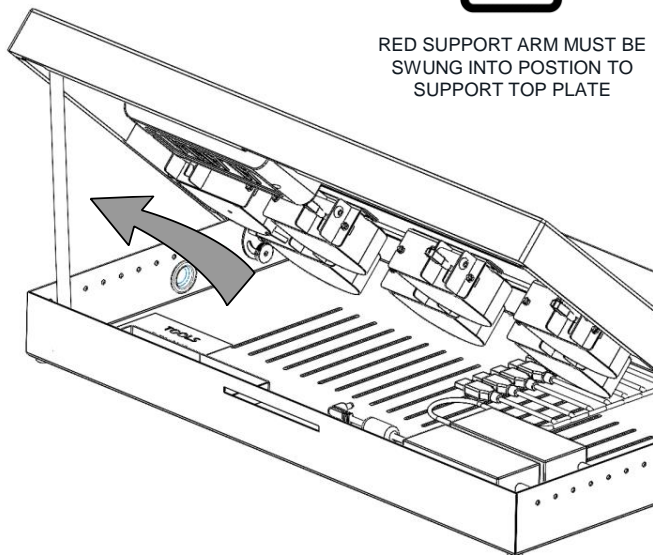
AS33X



7

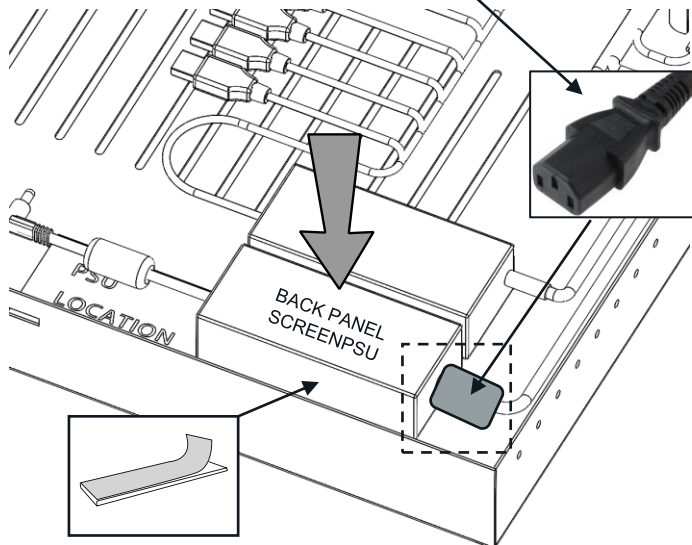


RED SUPPORT ARM MUST BE
SWUNG INTO POSITION TO
SUPPORT TOP PLATE

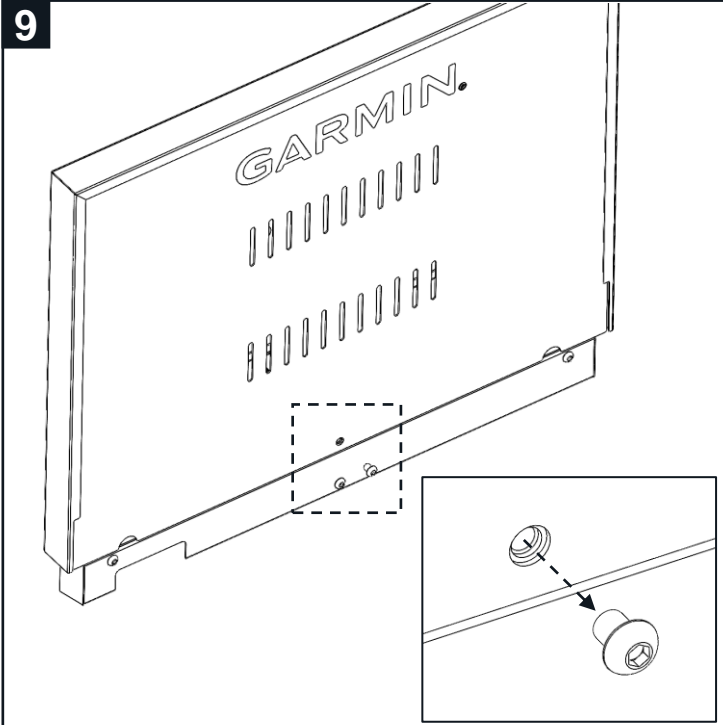


8

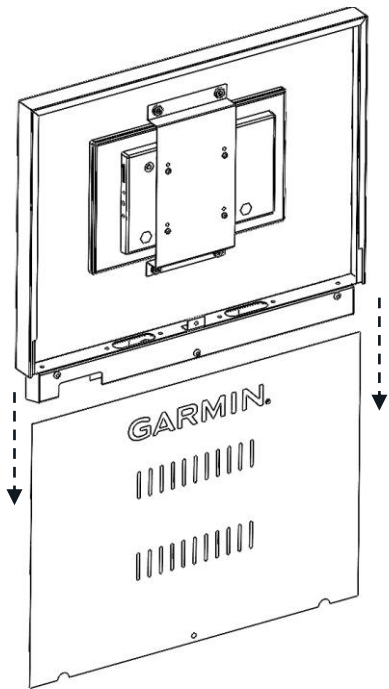
IEC PLUG COMING
FROM MAIN POWER
LOOM ON CTU SECTION



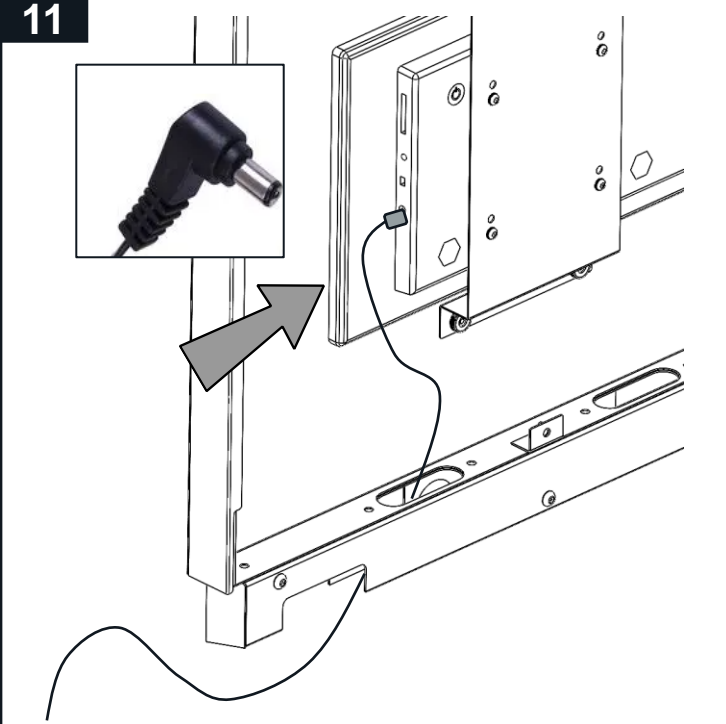
9



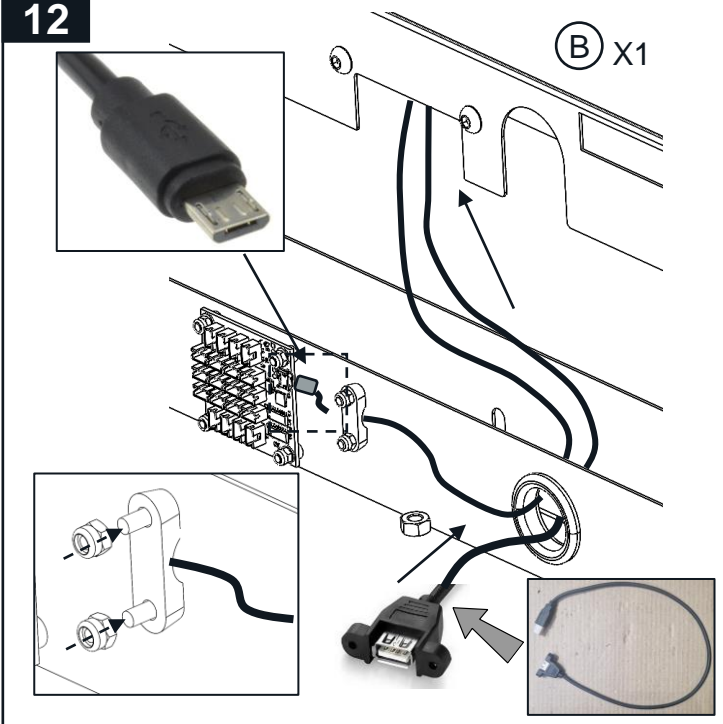
10



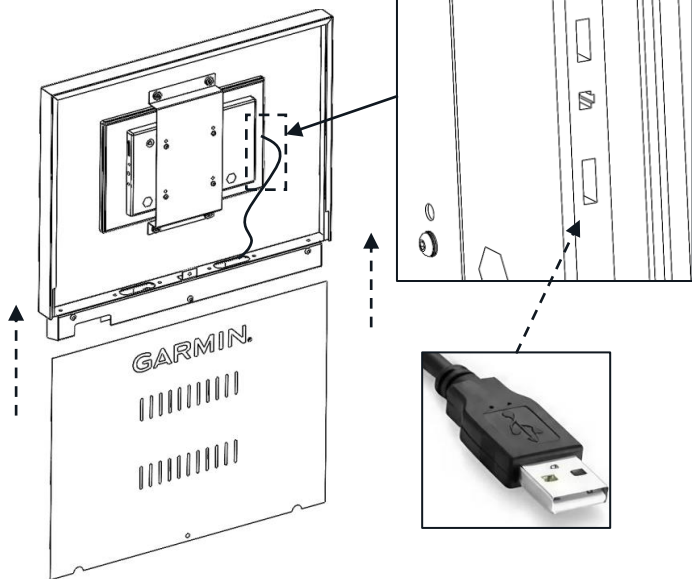
11



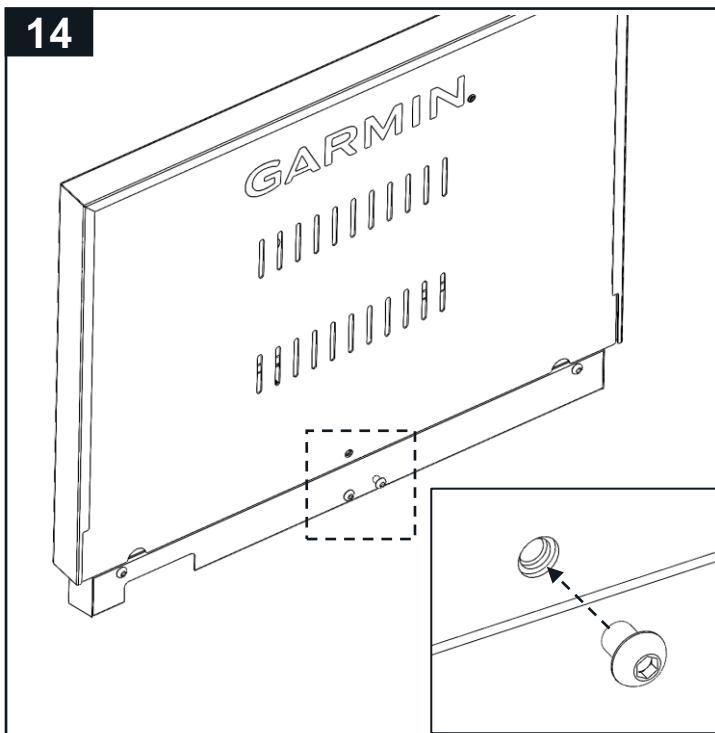
12



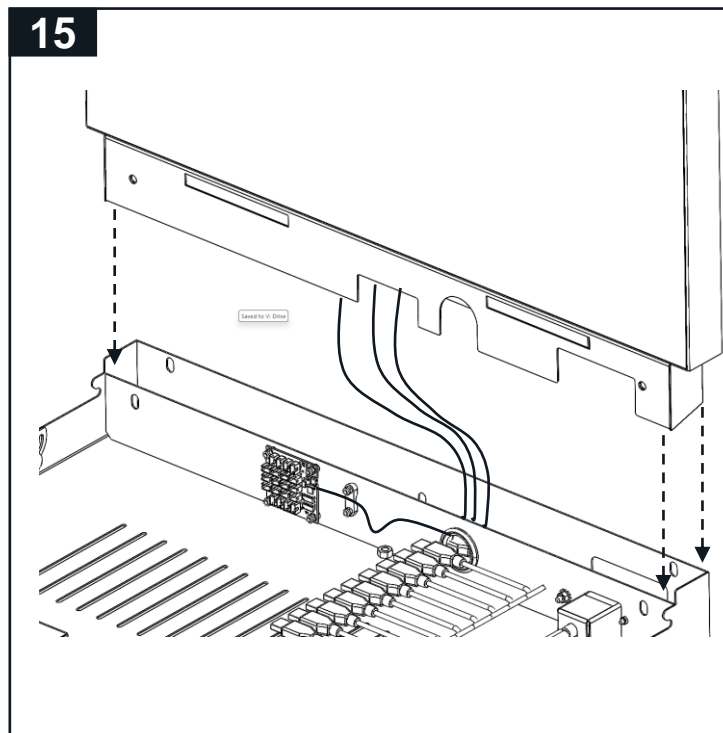
13



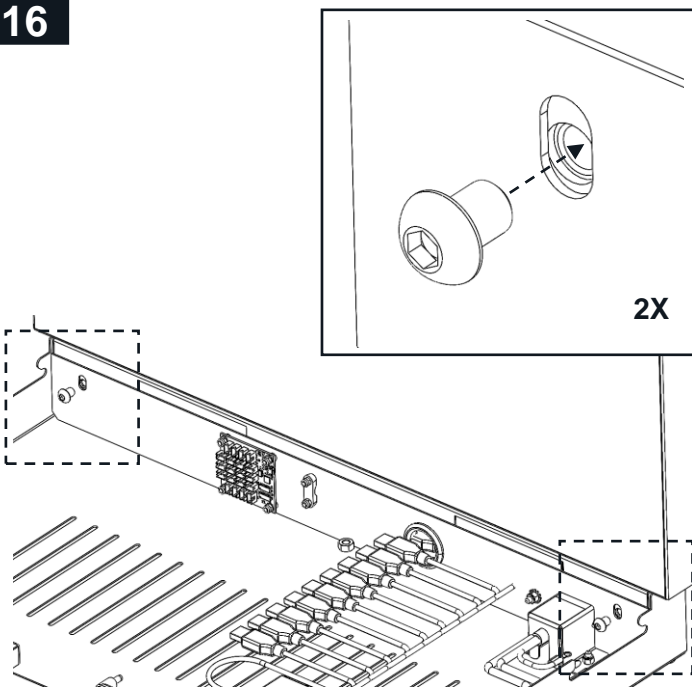
14



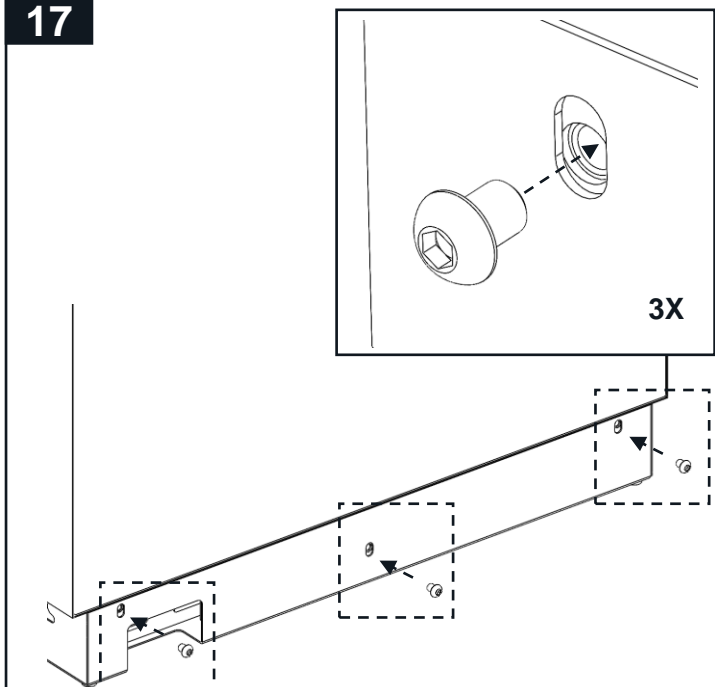
15



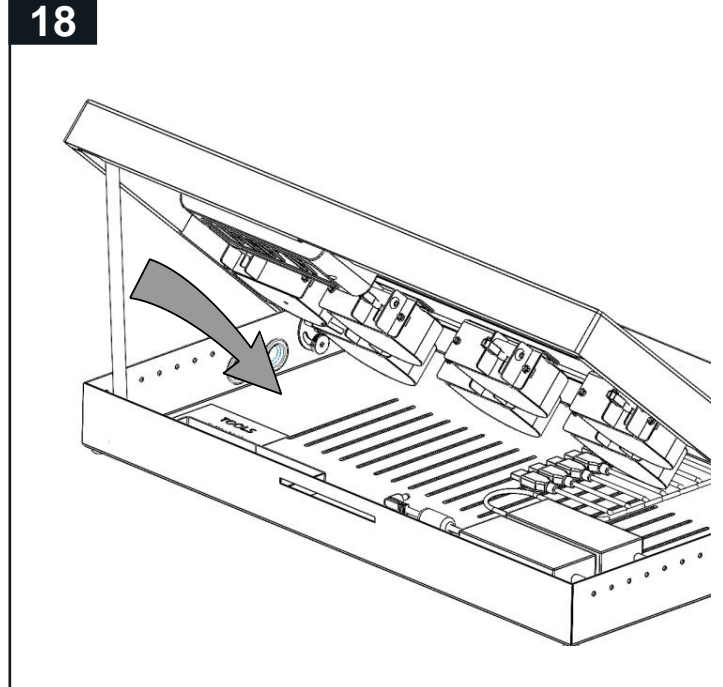
16



17

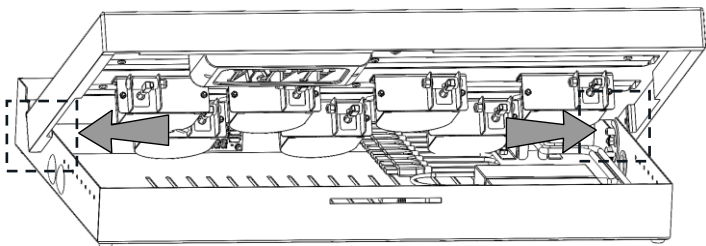
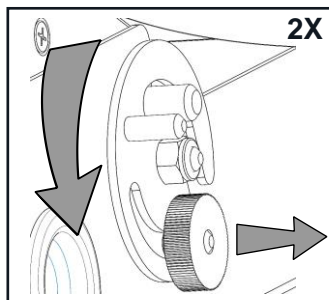


18

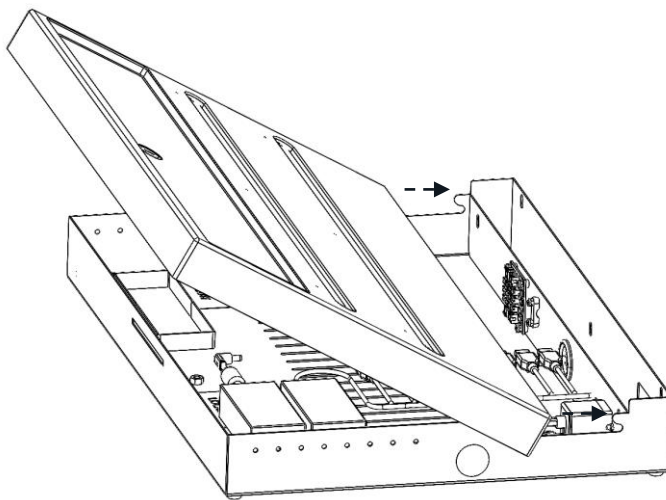


GARMIN®

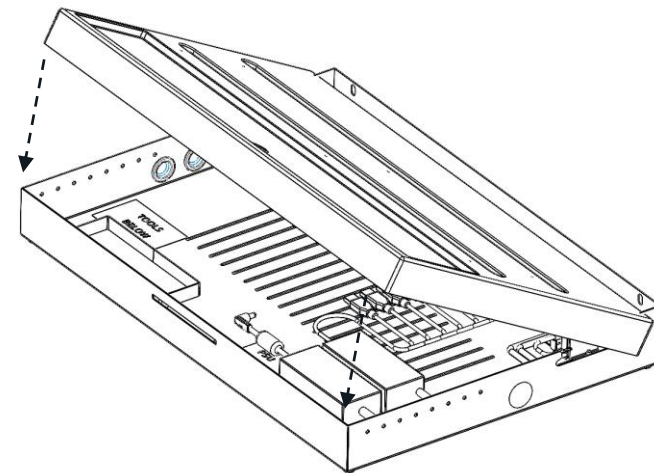
19



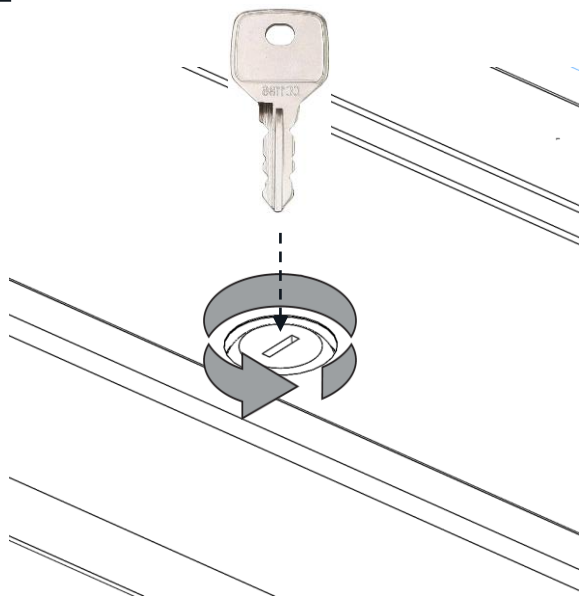
20



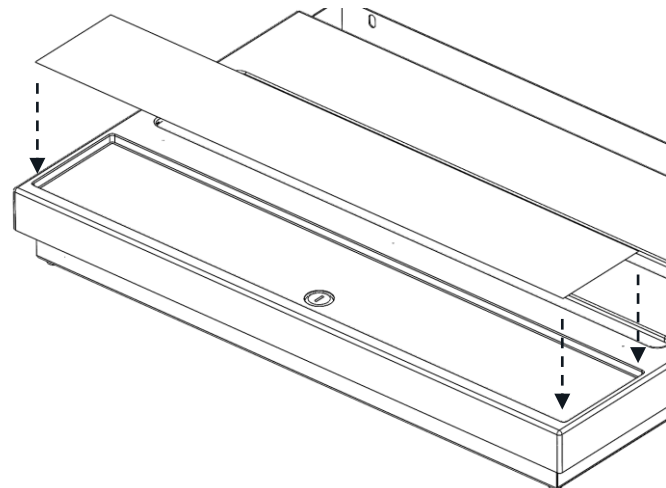
21



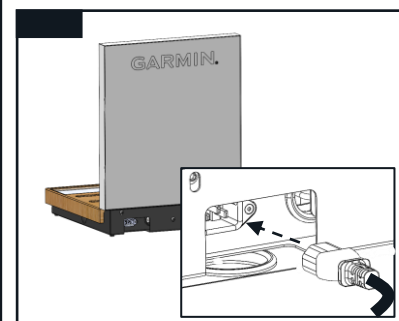
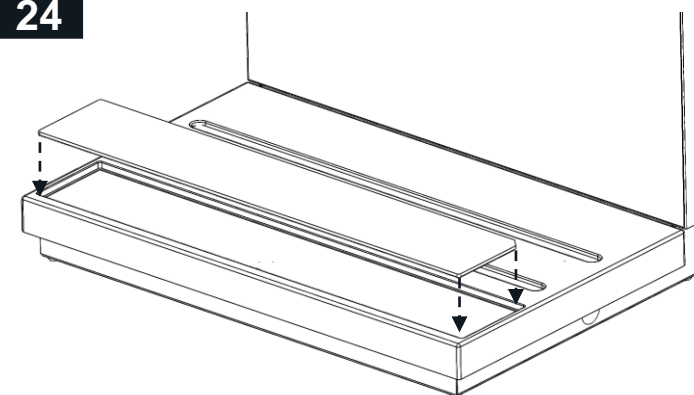
22



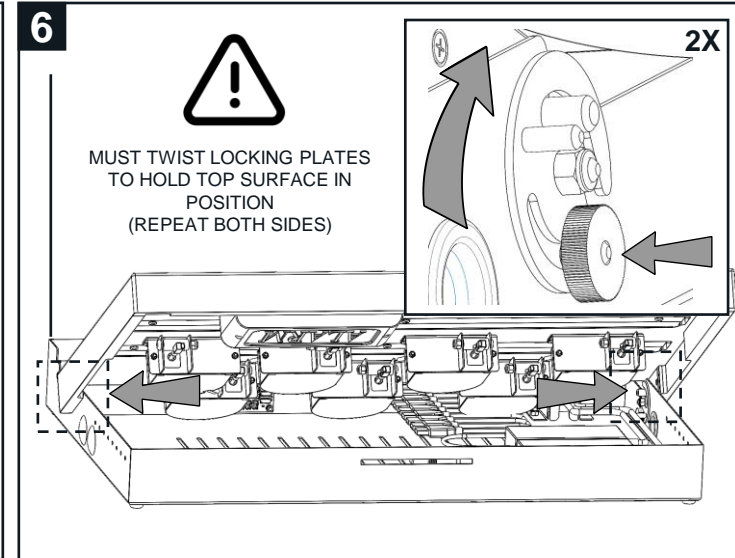
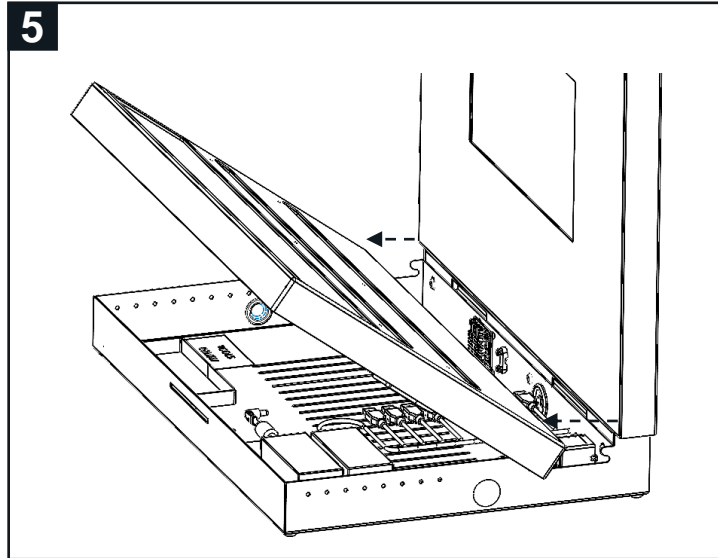
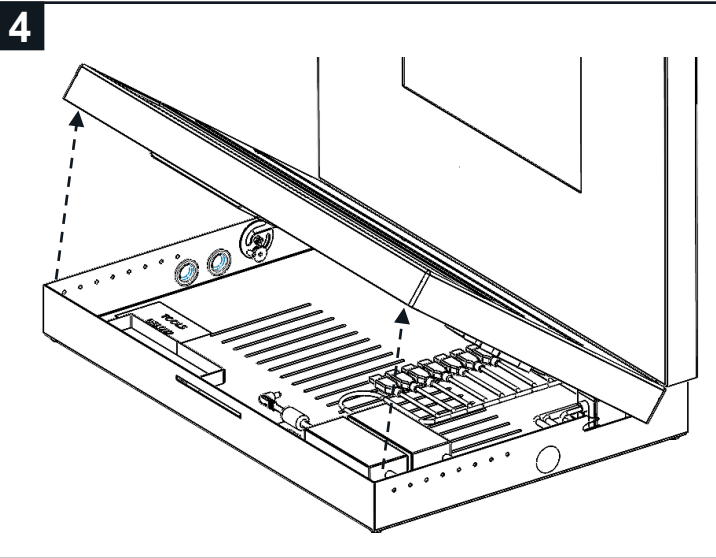
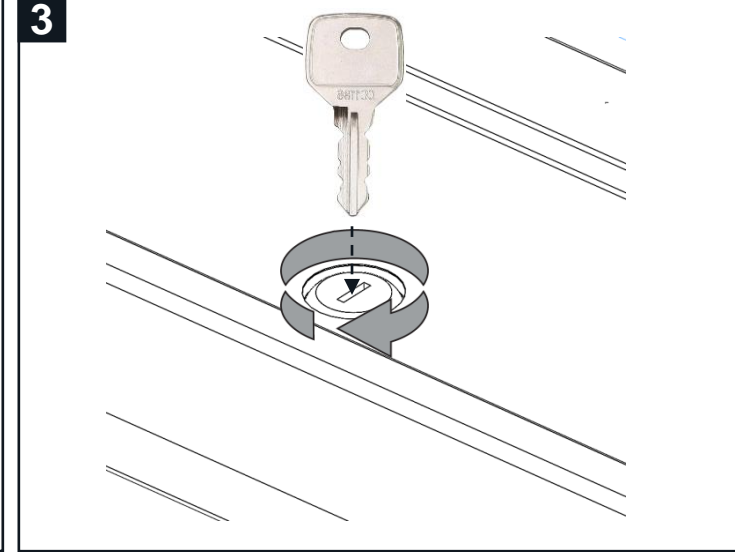
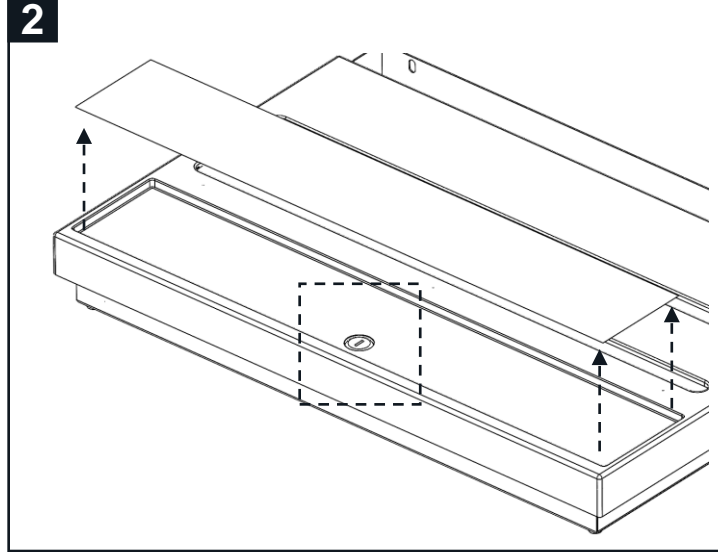
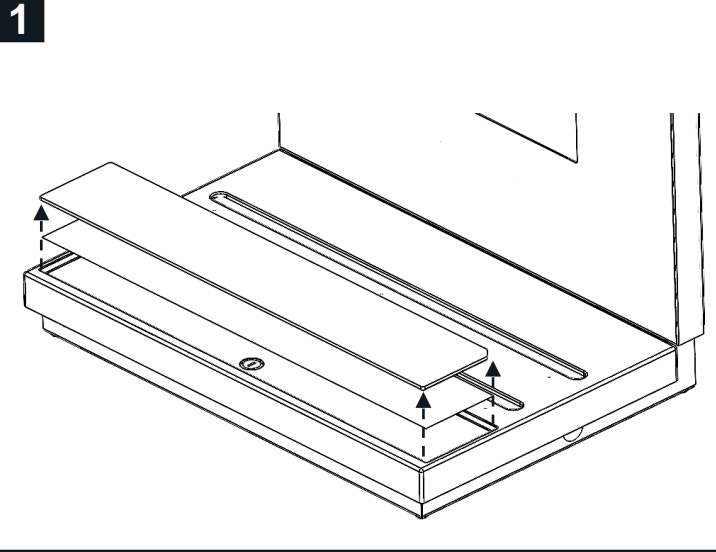
23



24



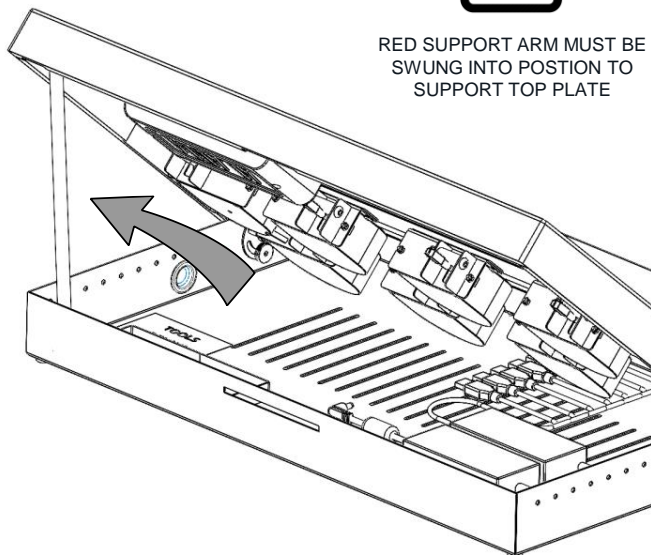
Fitting security to your CTU



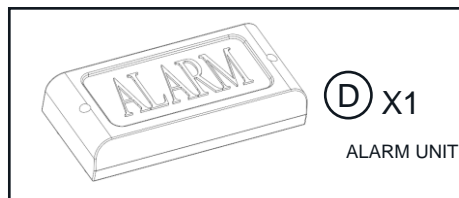
7



RED SUPPORT ARM MUST BE
SWUNG INTO POSITION TO
SUPPORT TOP PLATE

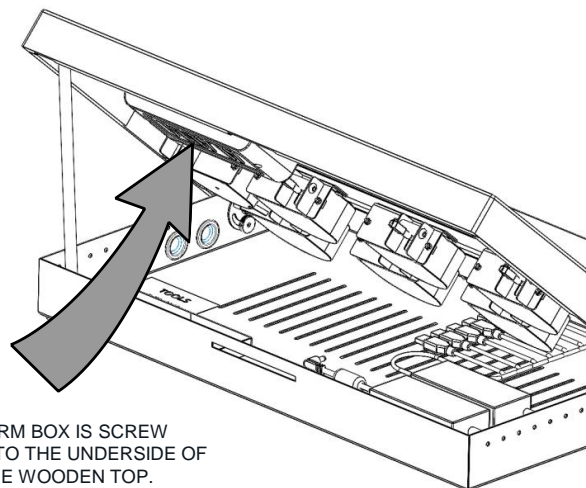


8



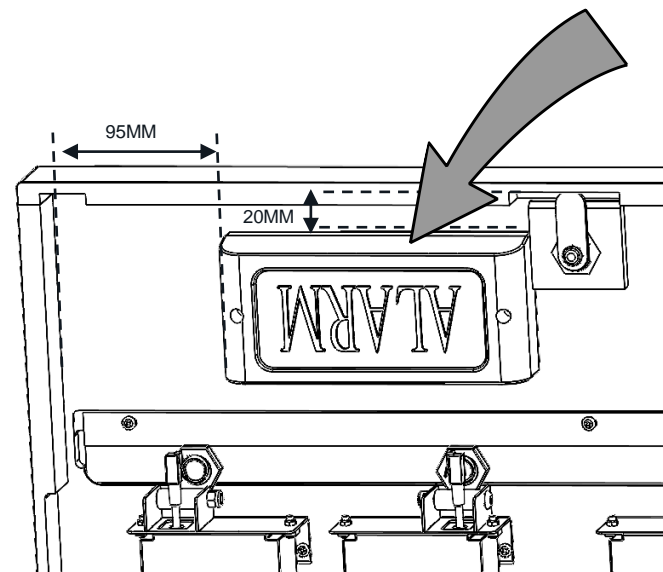
D X1

ALARM UNIT

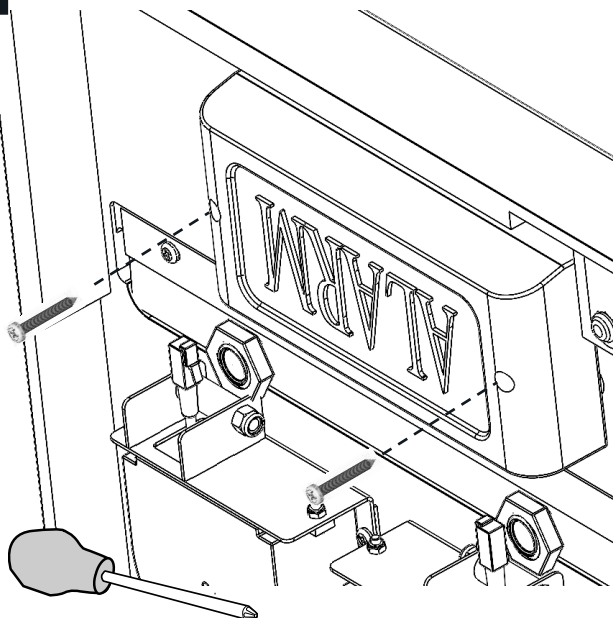


ALARM BOX IS SCREW
FITTED TO THE UNDERSIDE OF
THE WOODEN TOP.

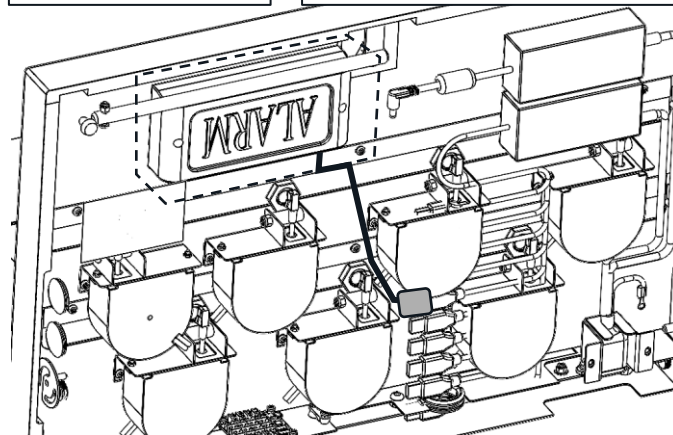
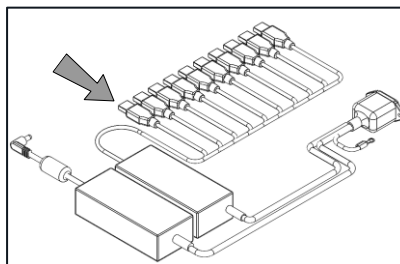
9



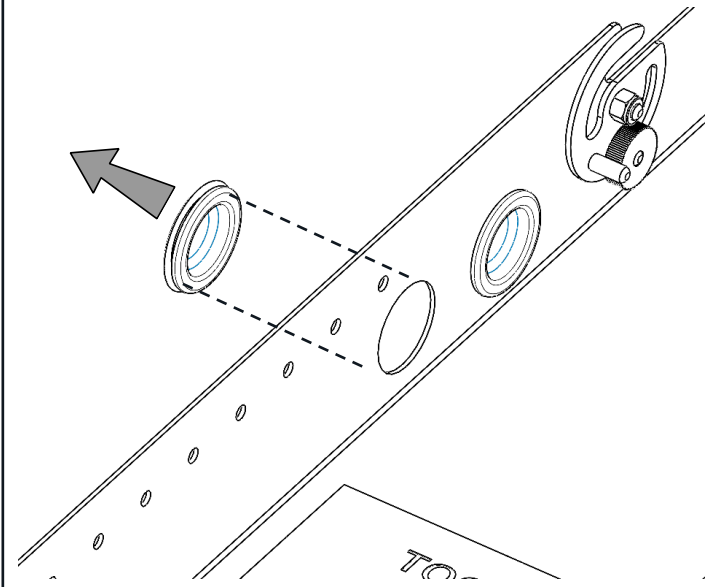
10



11

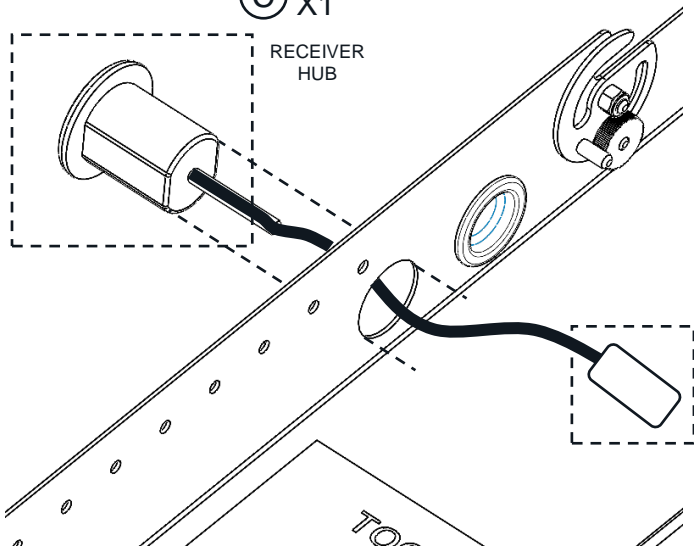


12



13

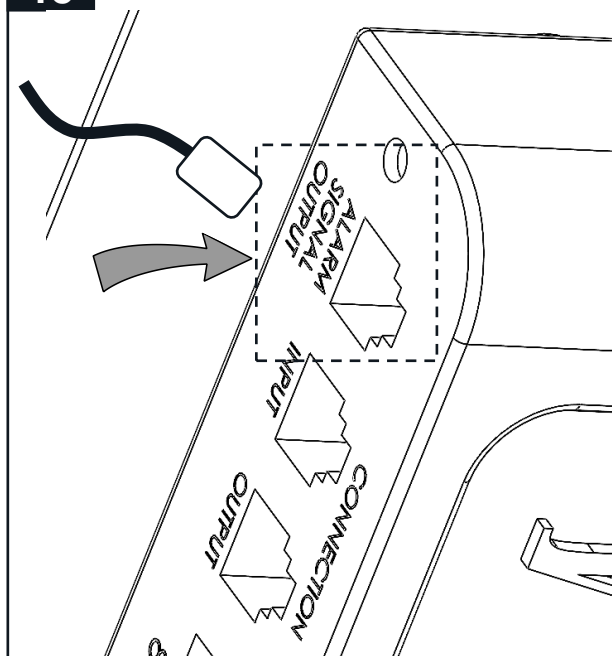
© X1

RECEIVER
HUB

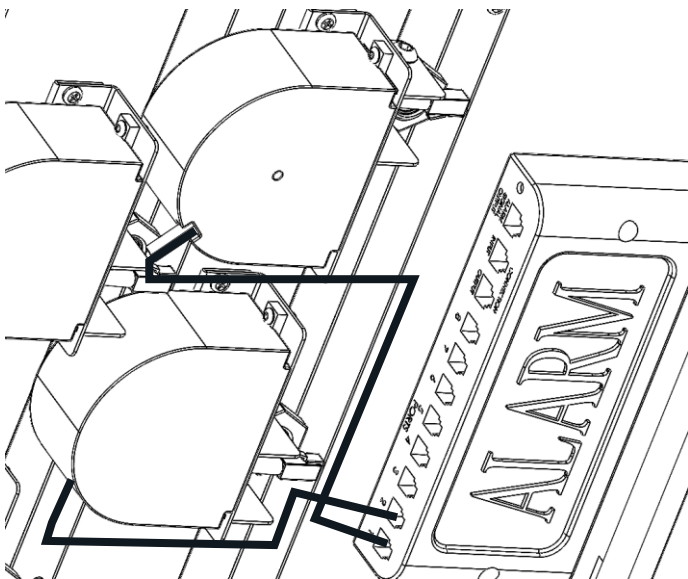
14



15



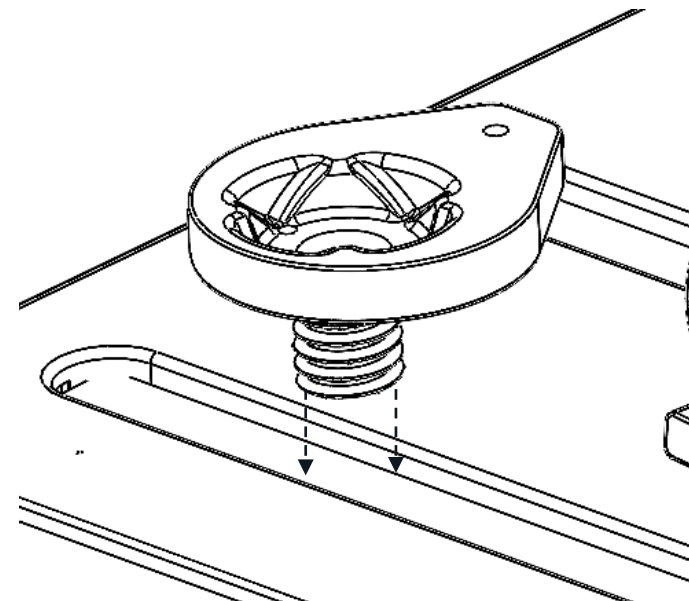
16



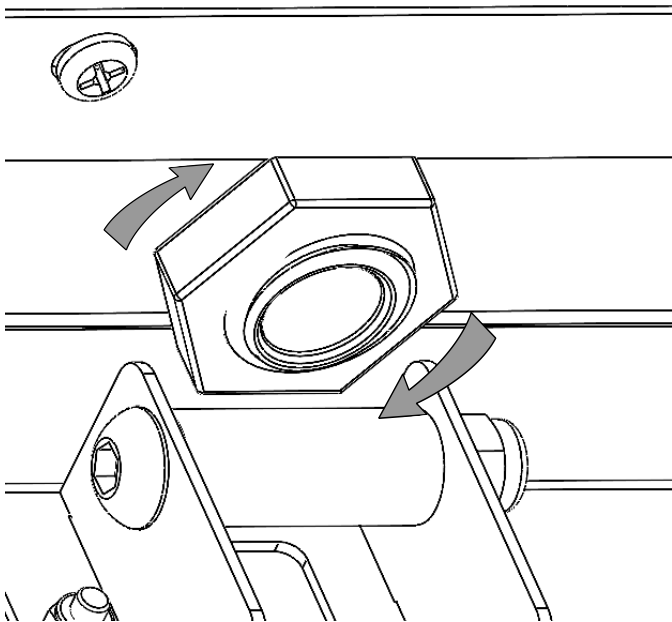
17



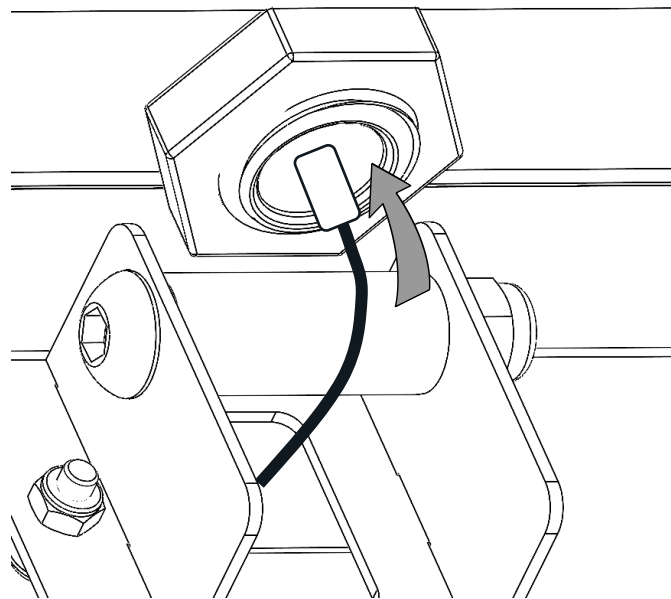
18



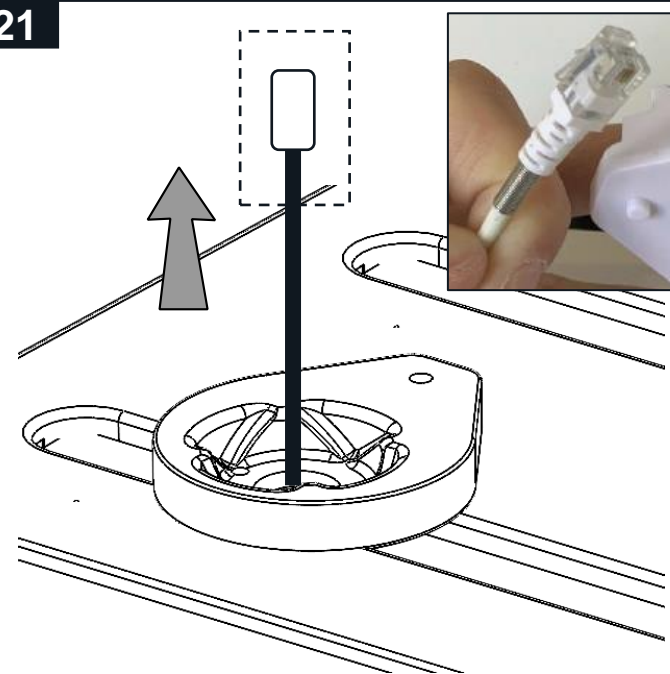
19



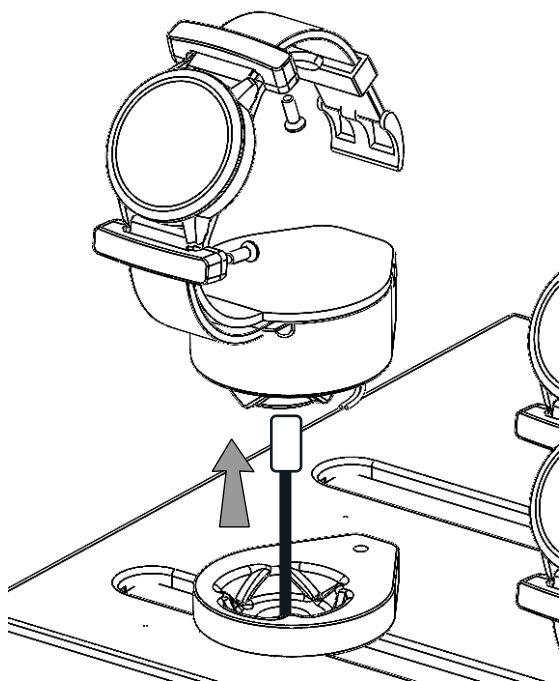
20



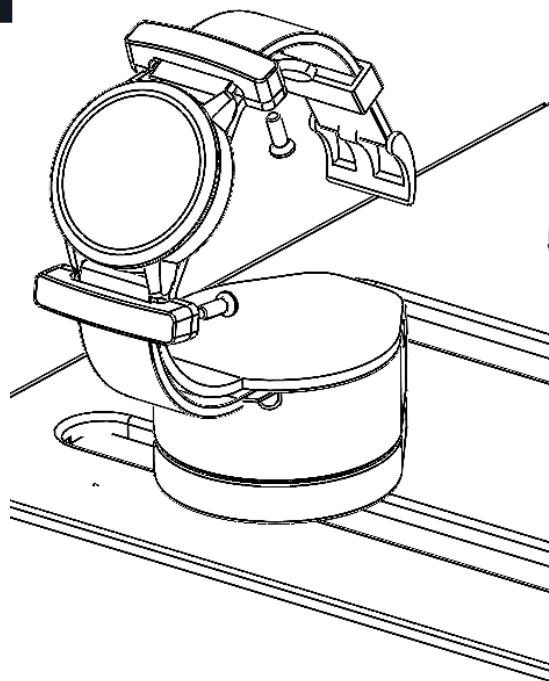
21



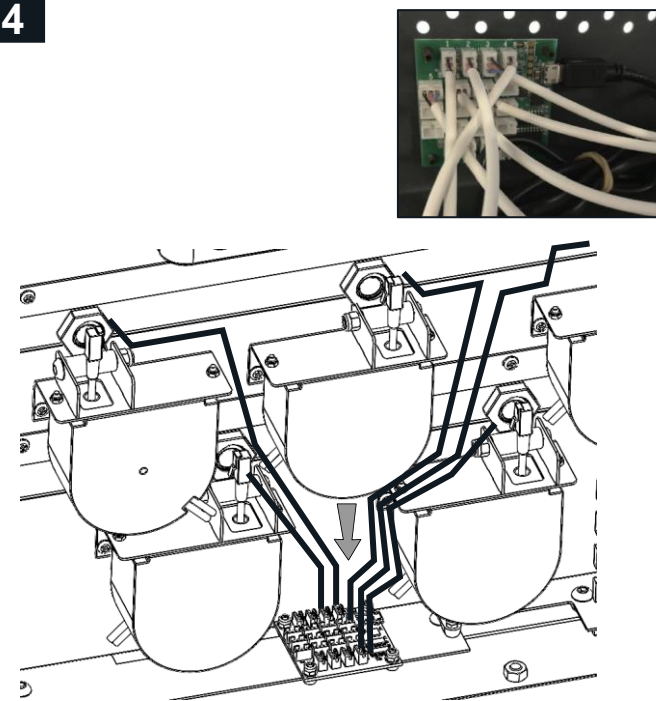
22



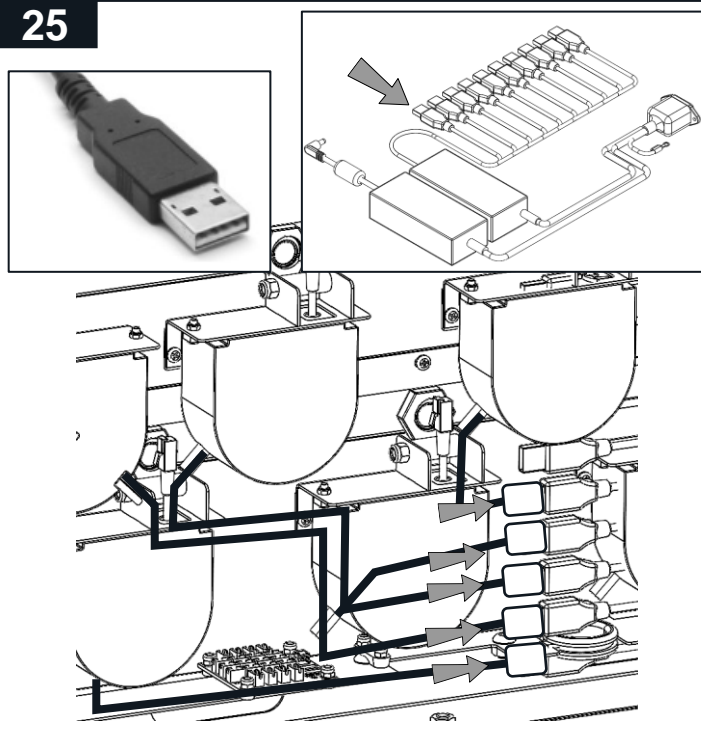
23



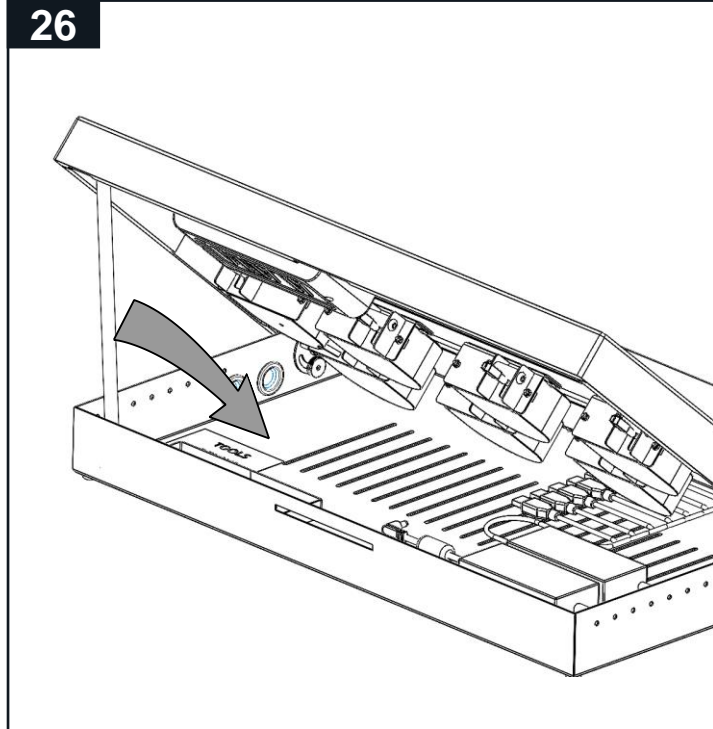
24



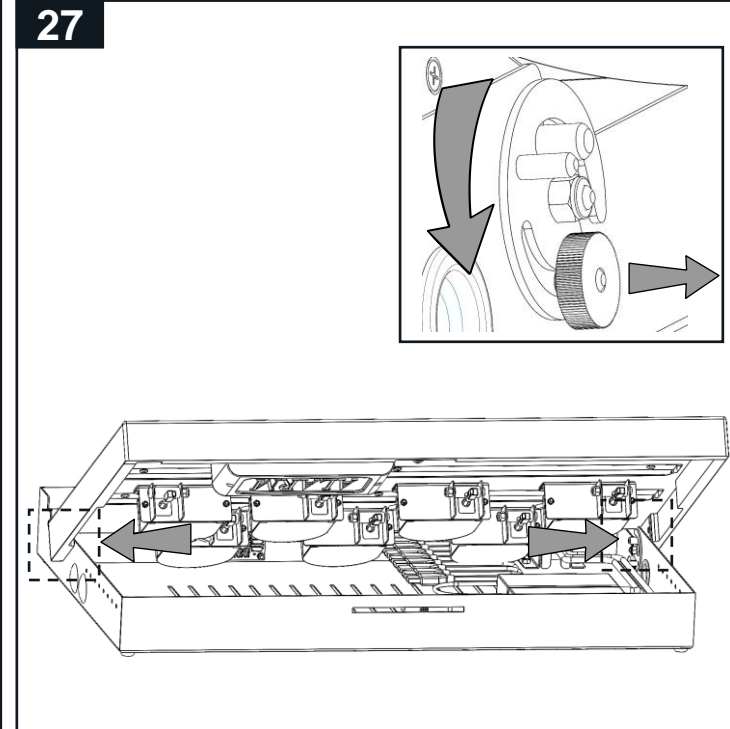
25



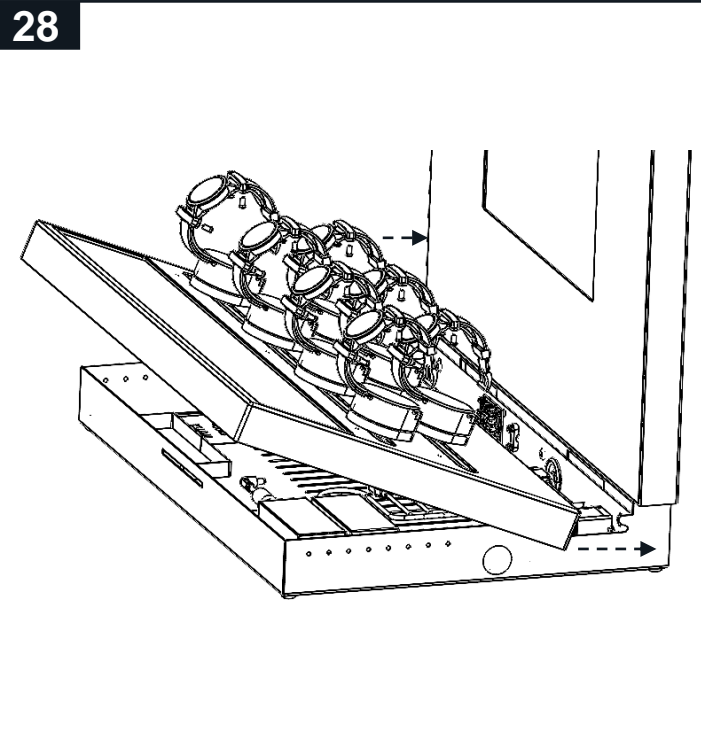
26



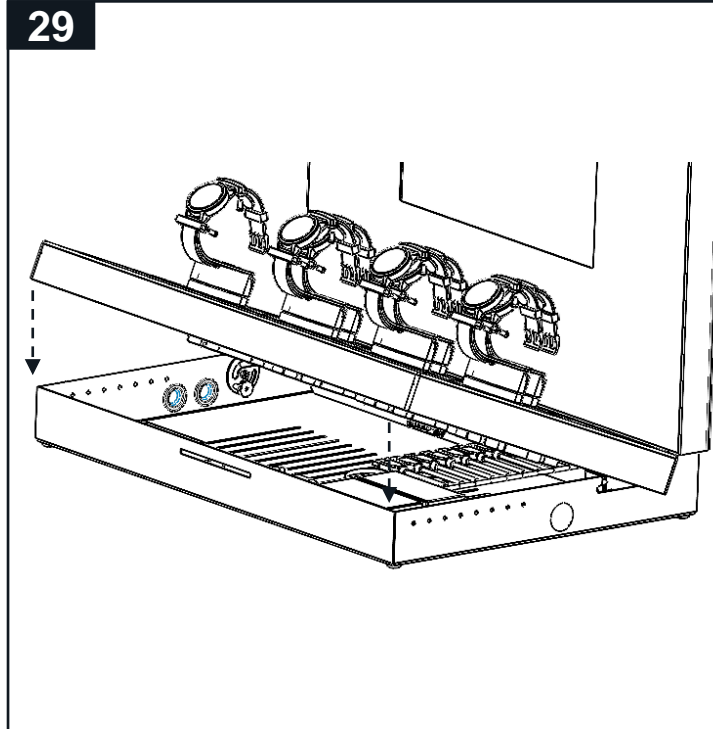
27



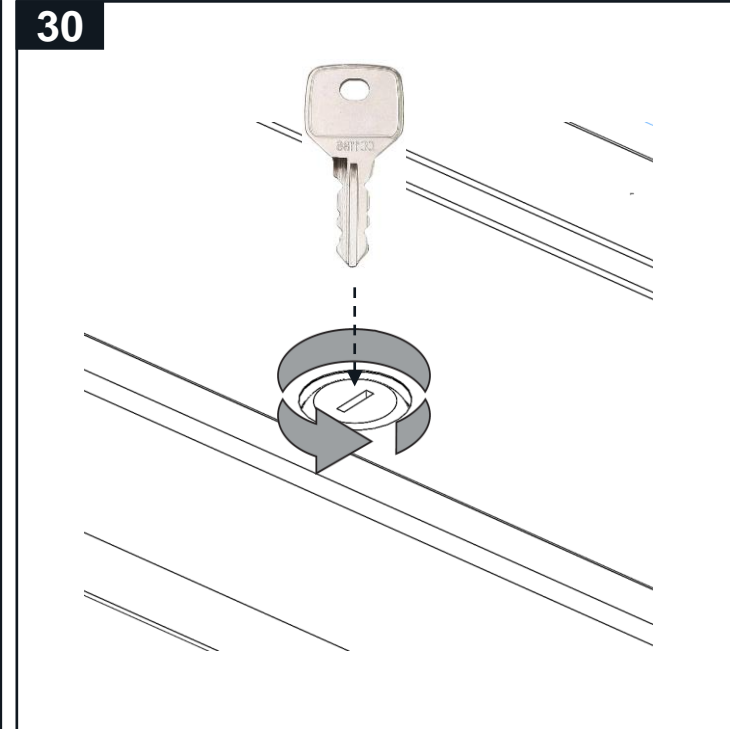
28



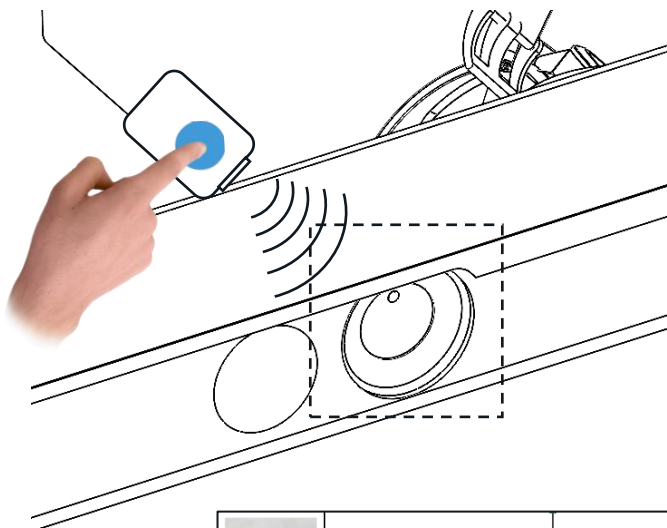
29



30



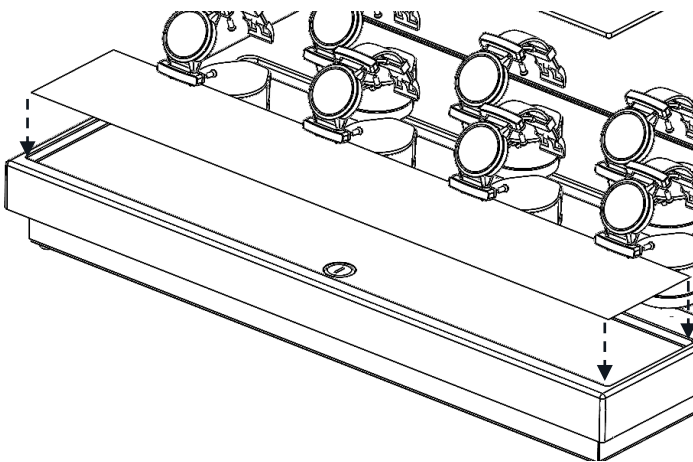
31



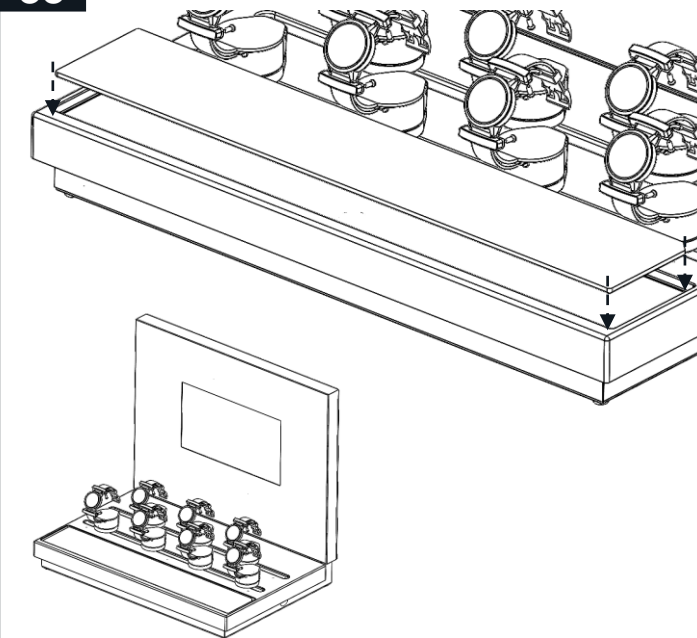
Remote Control (to work with
Access Control Remote Module)

AS33X

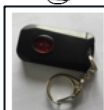
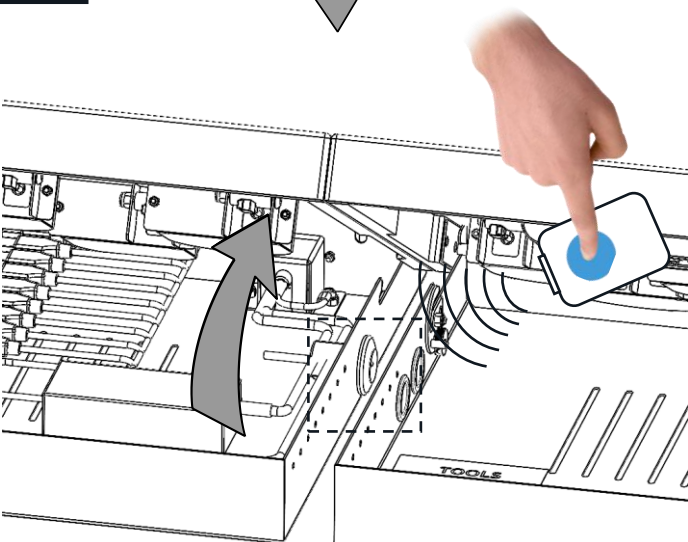
32



33

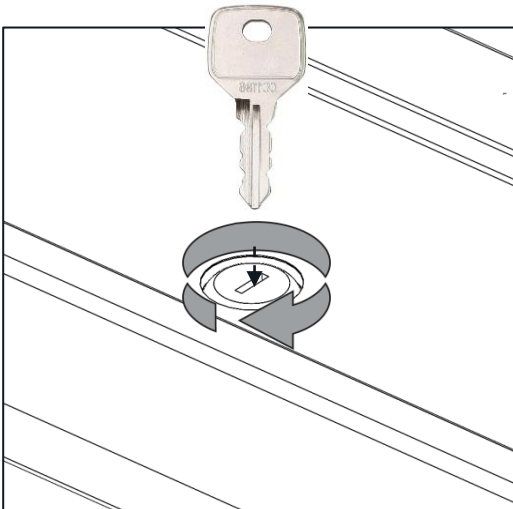


31



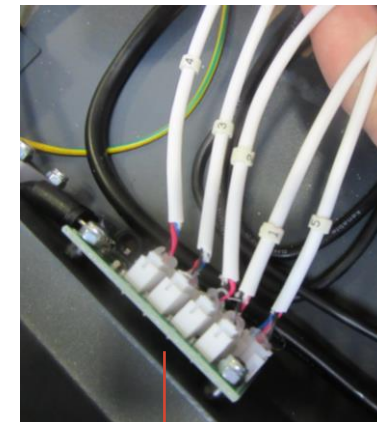
Remote Control (to work with
Access Control Remote Module)

AS33X

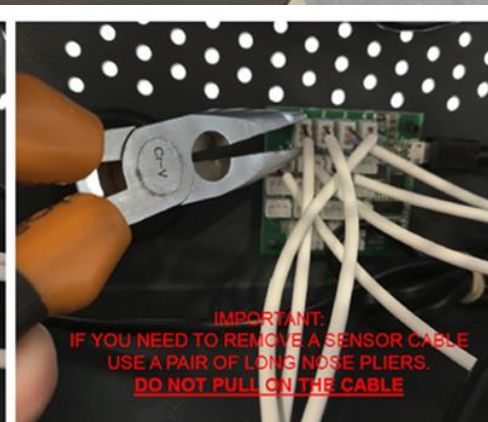


Platinum Security
Lift and Learn function
Power for live products with USB-C Charging
Alarm included
Positions 1-5





Lift and Learn cables
for PCB board
numbered 1-5



****IMPORTANT****

**Your displays come loaded with default video content, this is not lift and learn.
Lift and learn content must be loaded locally to match your store planogram.**

**This guide is for loading content when the screens are not connected to the internet
or our Connie content management platform**

Content Loading

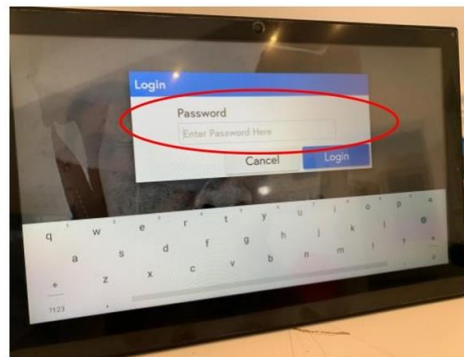
1. Open the base of your unit & locate the content USB port.
2. Ensure display is turned on and the screen is working.
3. Insert USB stick into USB port
4. Follow these instructions:



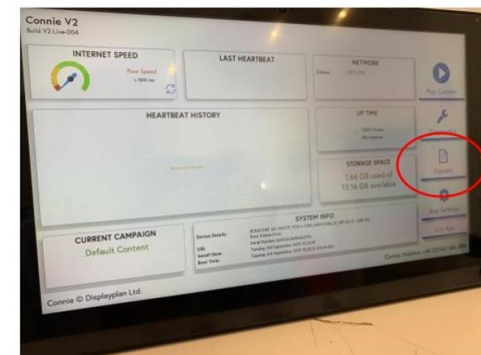
Insert USB into port inside base of unit or side of screen



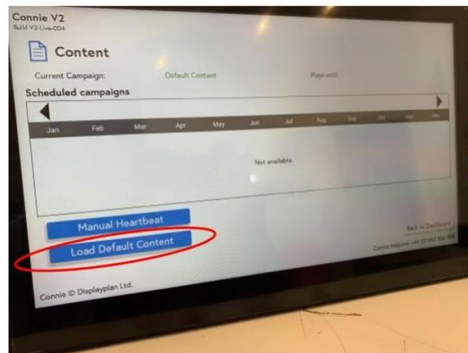
Tap 5 times top right of screen



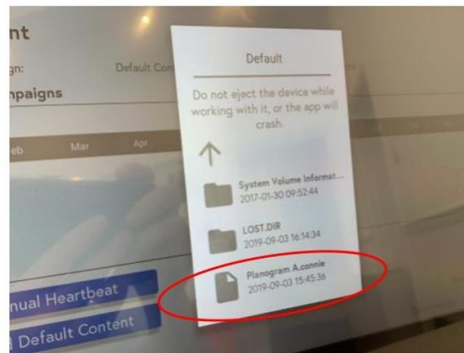
Enter password - display



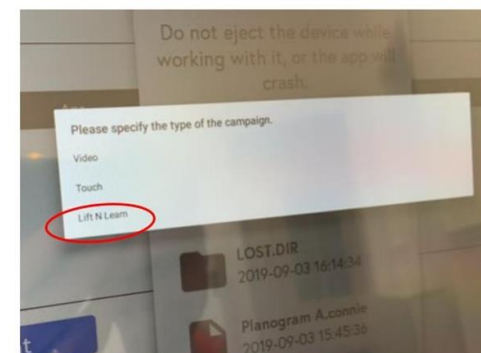
Click content



Click load default content



Find the .connie file you have loaded to the USB stick



Click lift n learn

Content Test

Check everything has been loaded correctly

1. Reboot the screen by un-plugging at the mains , check the app loads and idle video plays
2. Lift one product, check the content changes to correctly match the product lifted
3. Repeat with all products
4. Lift two products check the correct compare images display
5. Repeat with all products
6. Reboot display again by un-plugging at the mains, allow to re-boot and then process is complete

