


GARMIN

CORPORATE DISPLAY

P12674 | 19/11/2024

CTU + GRAPHIC HEADER + PLATIUM POSTS

TOOLS REQUIRED – SUPPLIED



4MM ALLEN KEY

Parts

A

X1

400MM

B

X1

400MM

D

X5

PLATIUM  
SECURITY  
POSTS  
(PRE-FITTED)

C

X1

E

X5

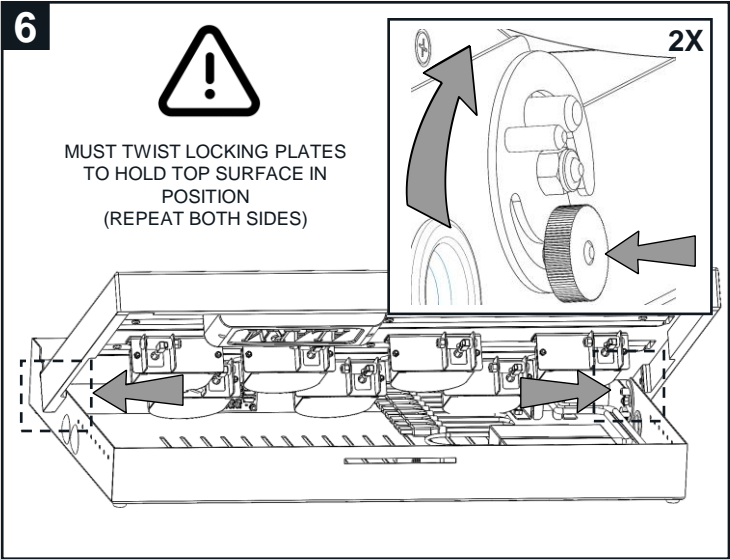
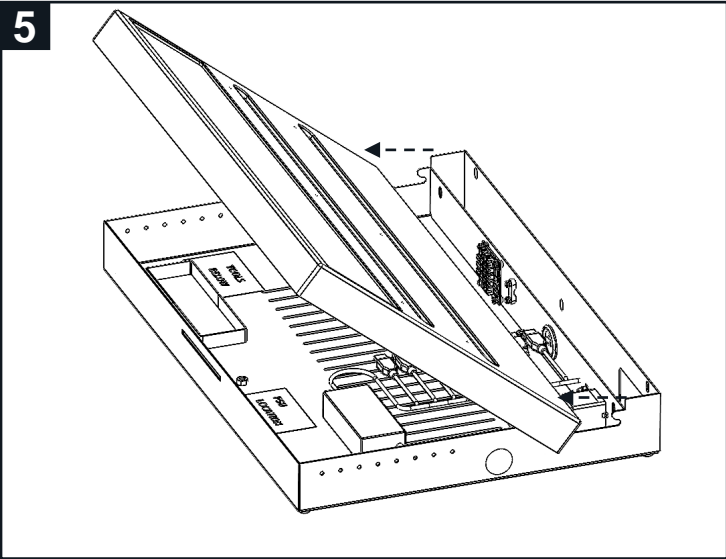
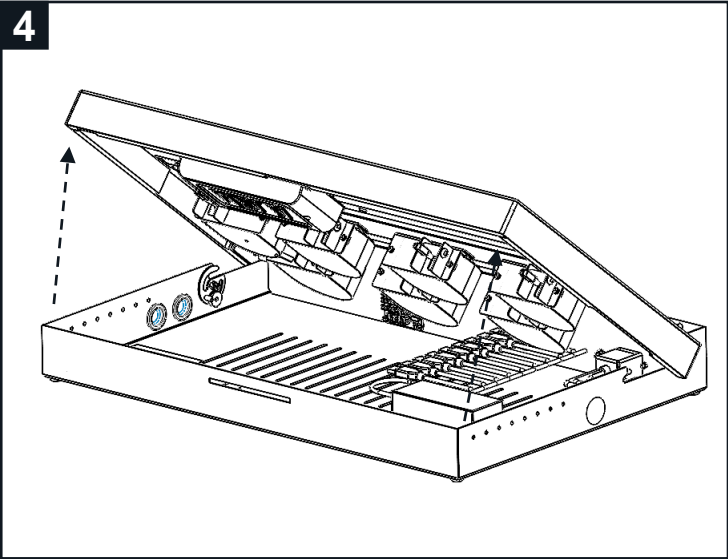
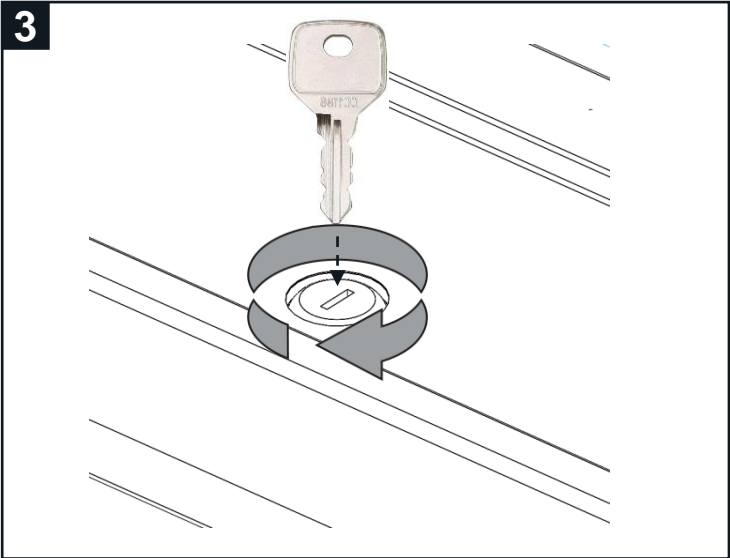
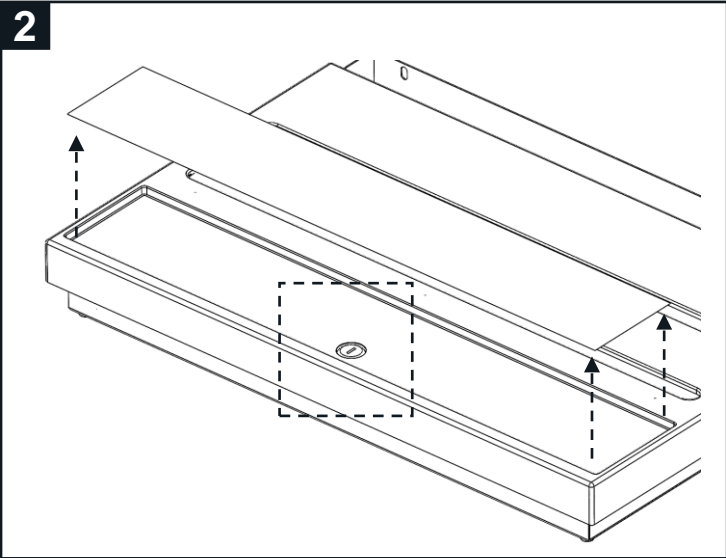
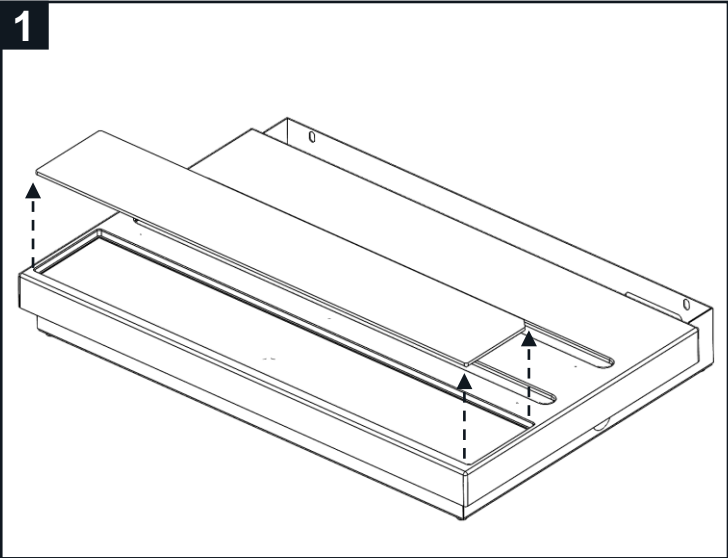
M6X8MM  
SCREW

F

X1

Remote Control (to work with  
Access Control Remote Module)

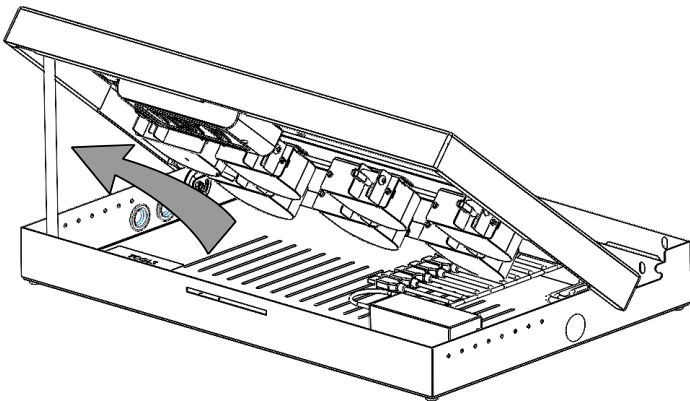
AS33X



7

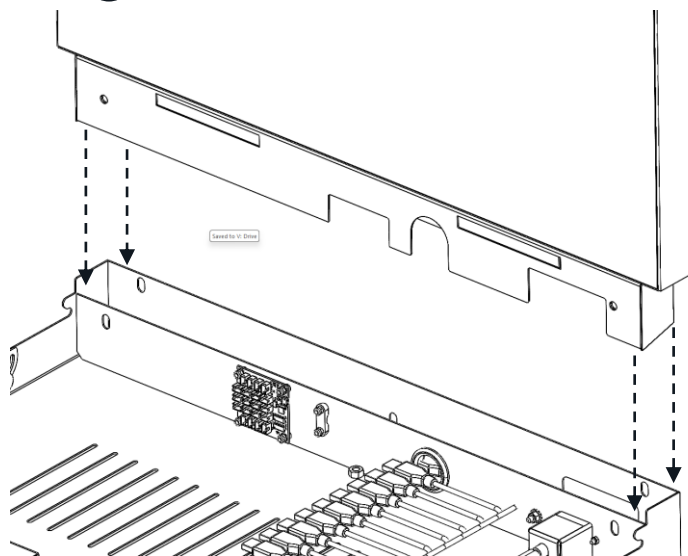


RED SUPPORT ARM MUST BE  
SWUNG INTO POSITION TO  
SUPPORT TOP PLATE

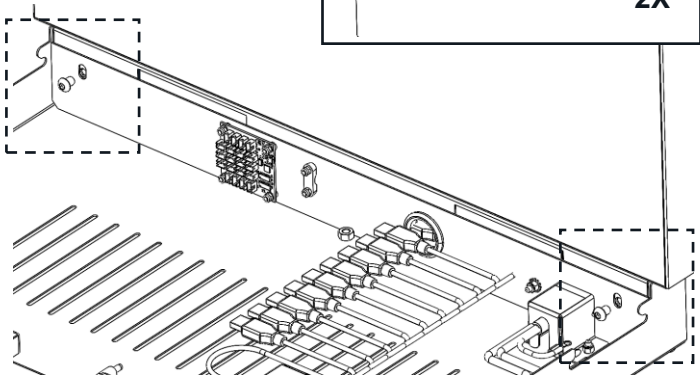
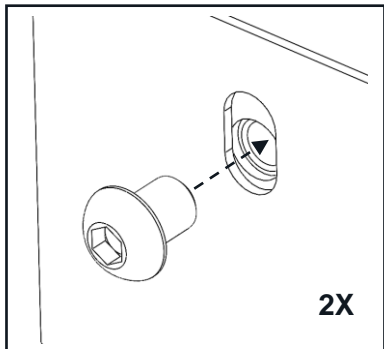


8

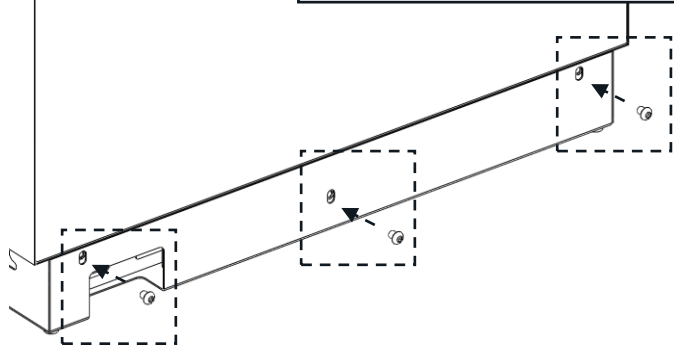
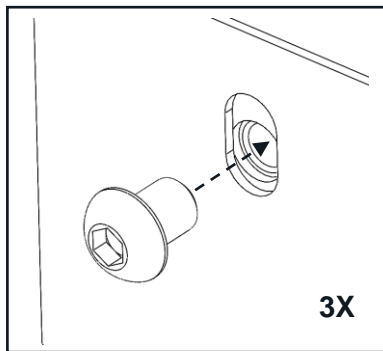
(B) X1



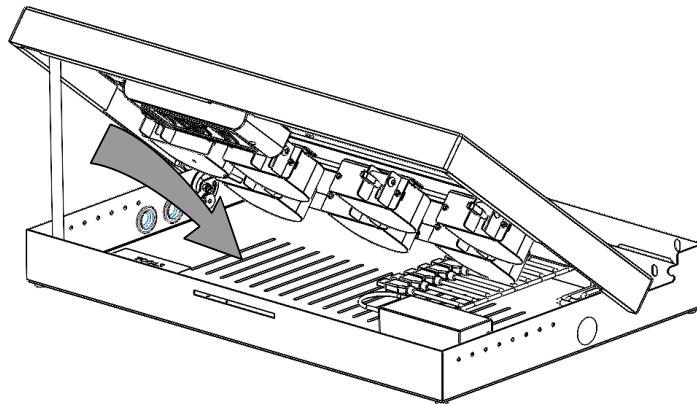
9



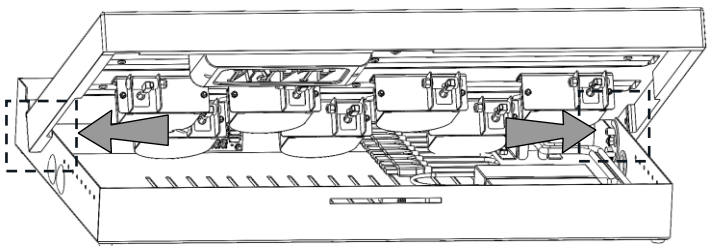
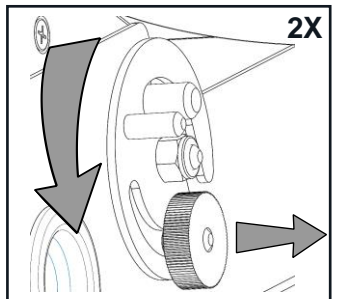
10



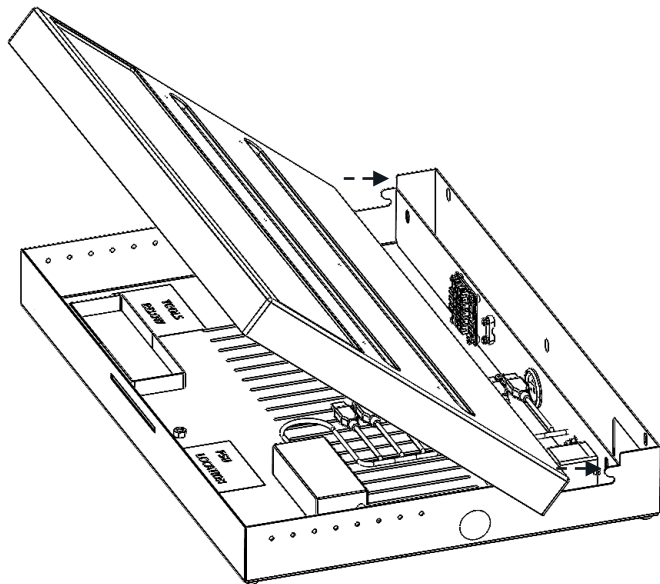
11



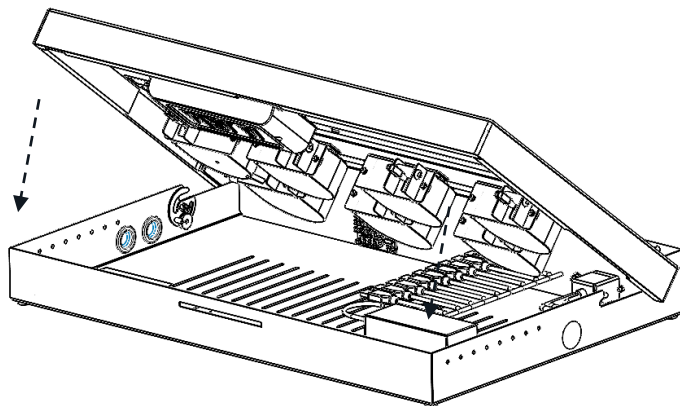
12



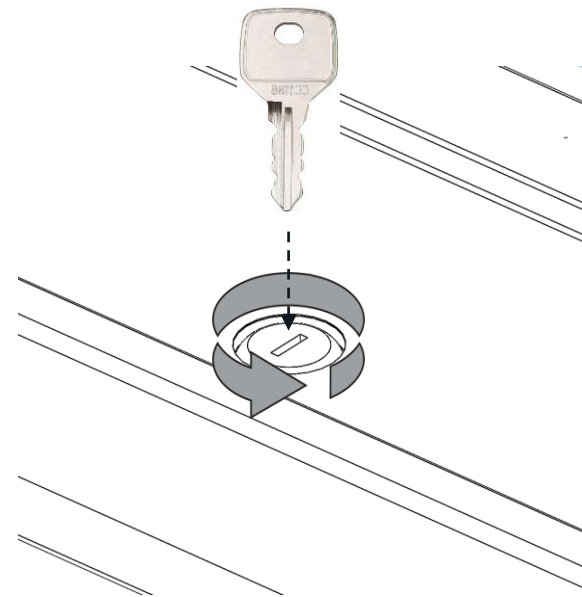
13



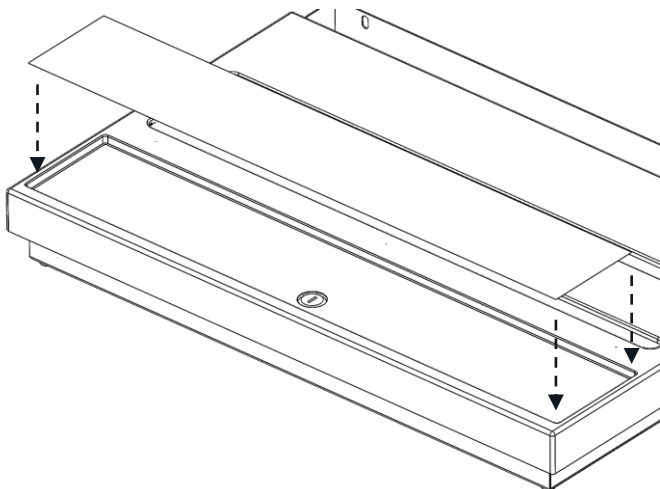
14



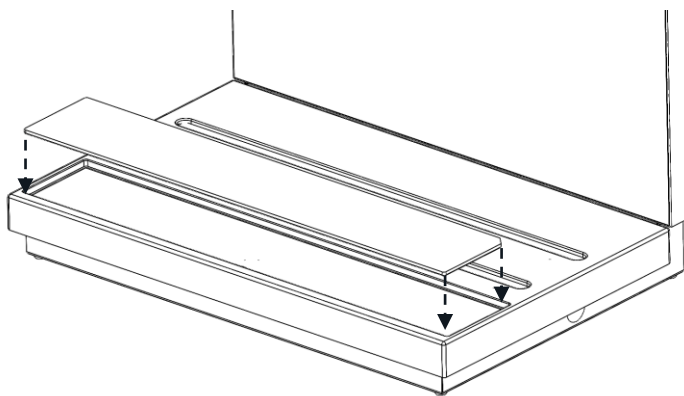
15



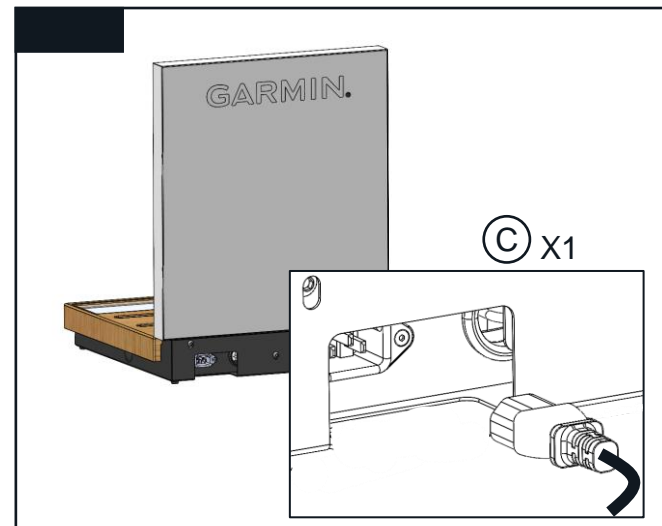
16



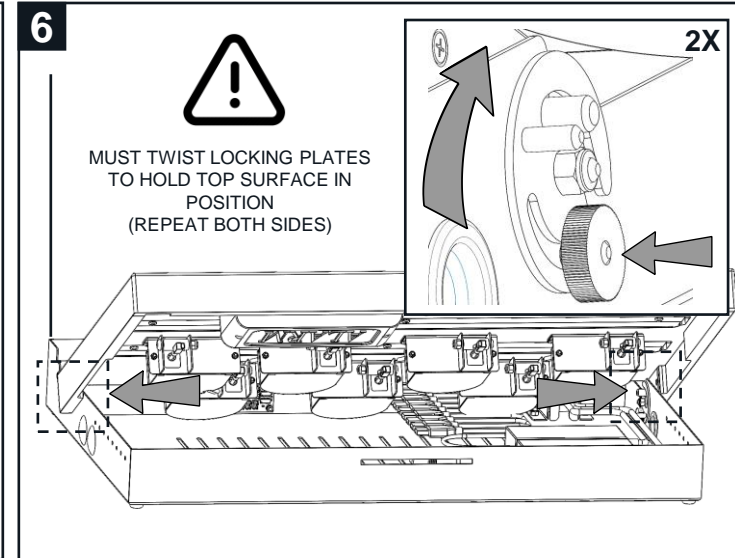
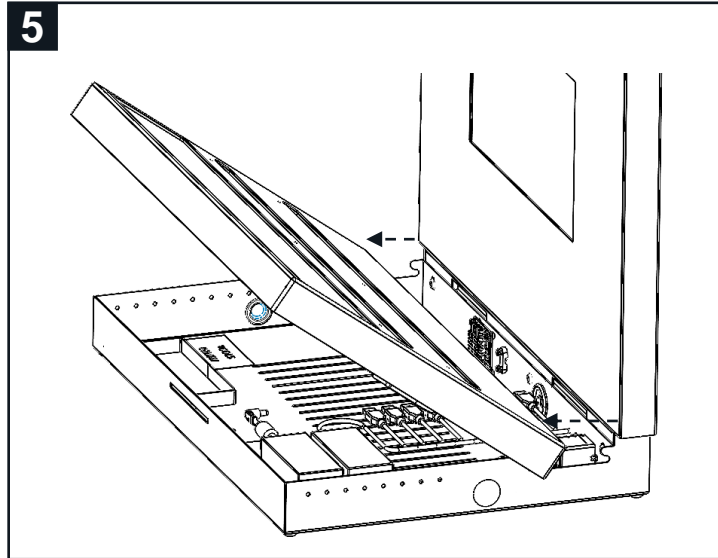
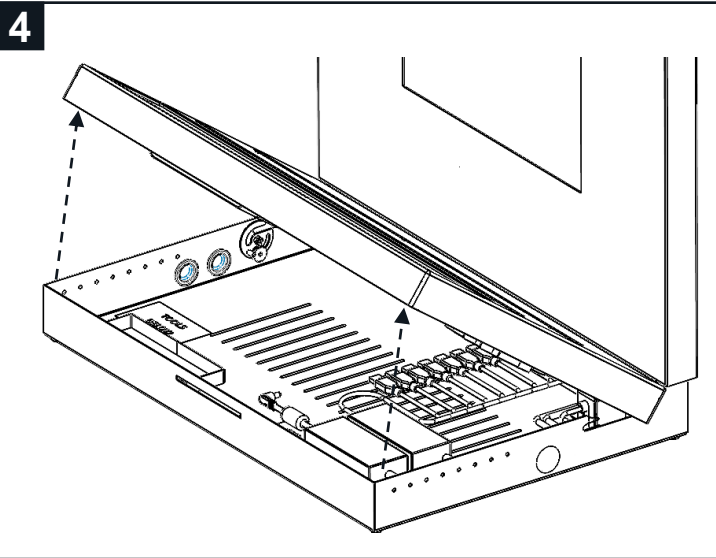
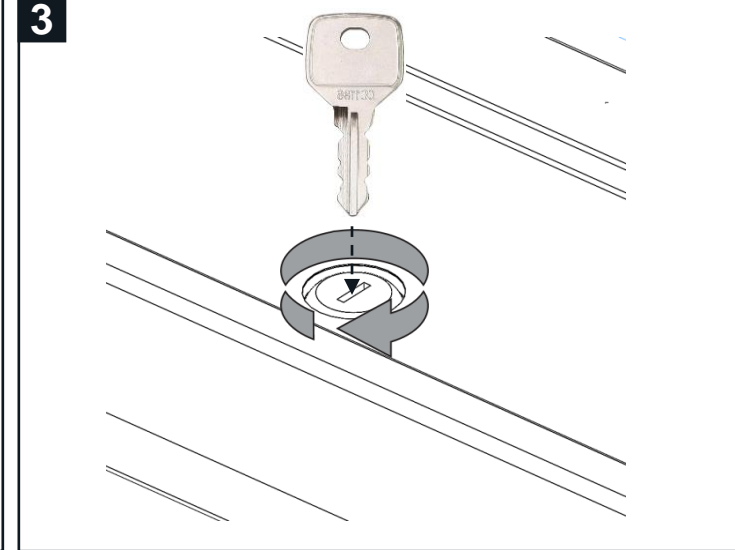
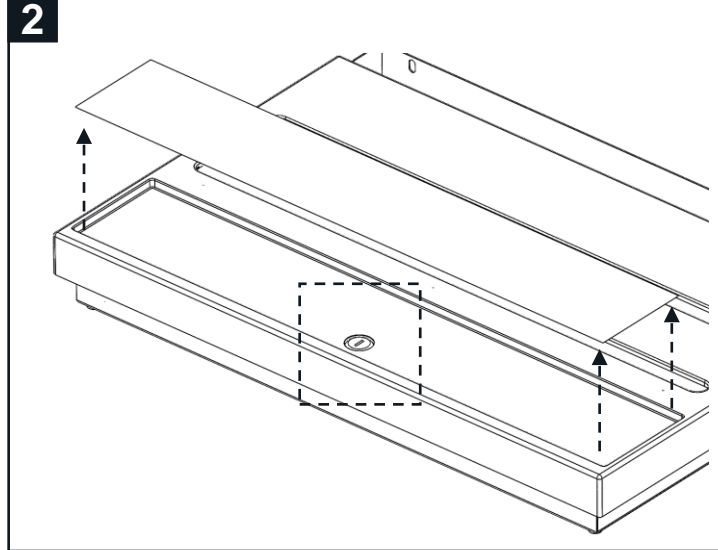
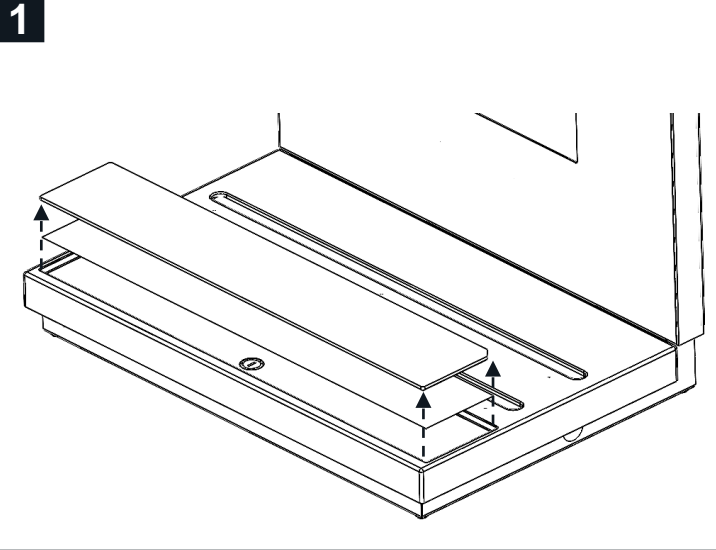
17



18



## Fitting security to your CTU

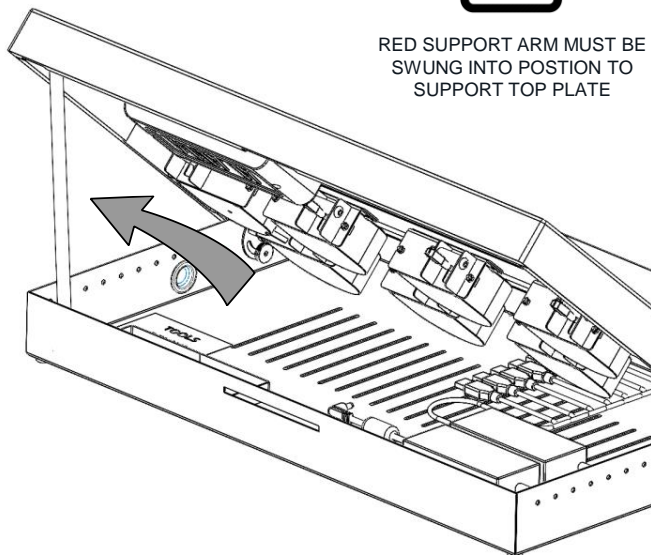




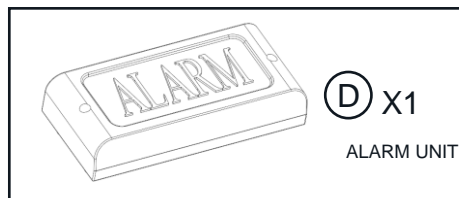
7



RED SUPPORT ARM MUST BE  
SWUNG INTO POSITION TO  
SUPPORT TOP PLATE

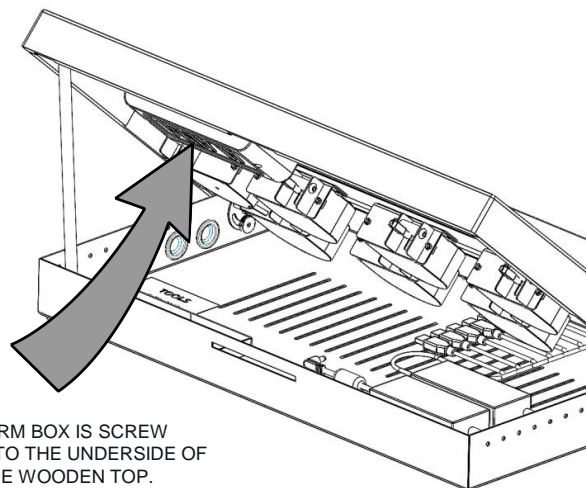


8



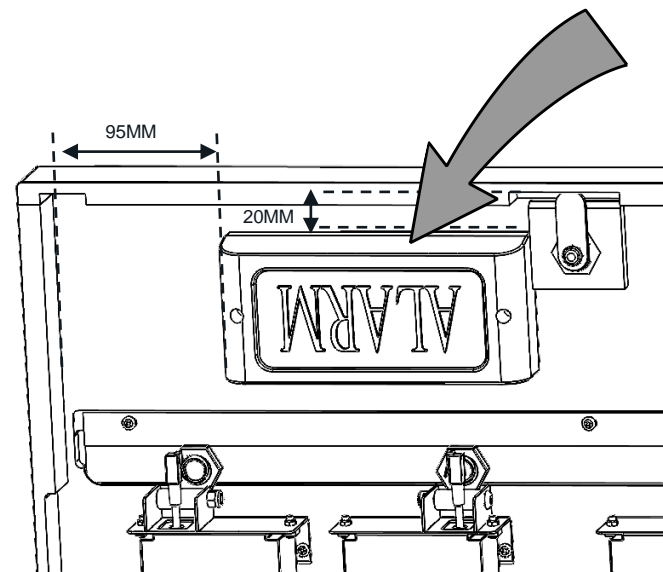
D X1

ALARM UNIT

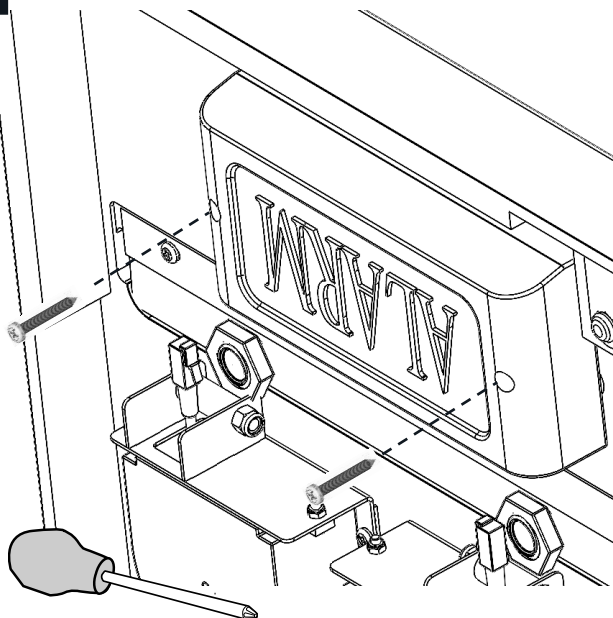


ALARM BOX IS SCREW  
FITTED TO THE UNDERSIDE OF  
THE WOODEN TOP.

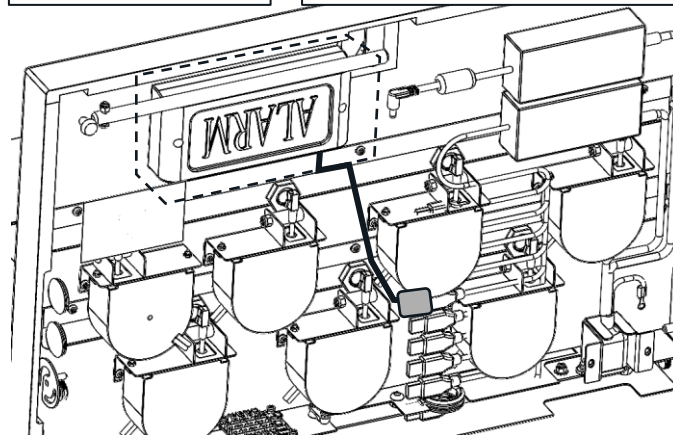
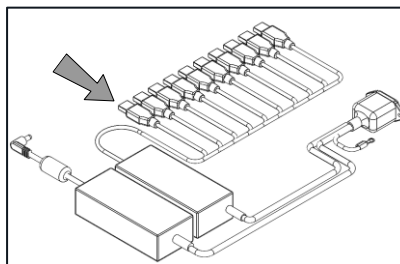
9



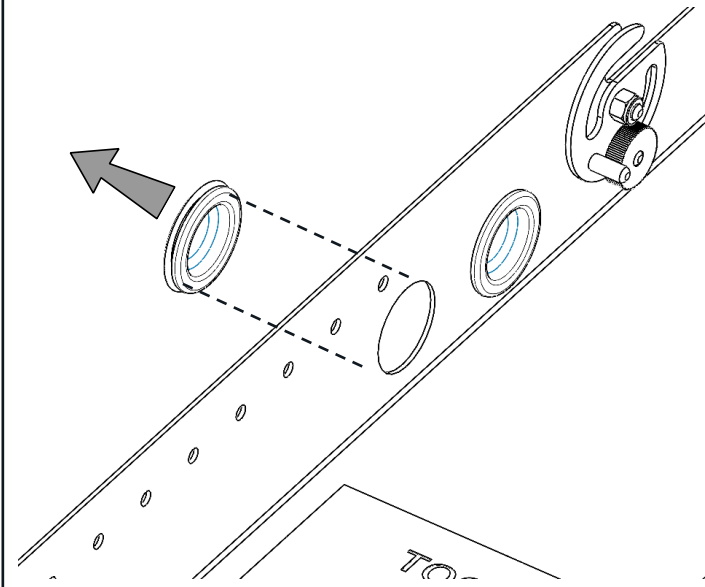
10



11

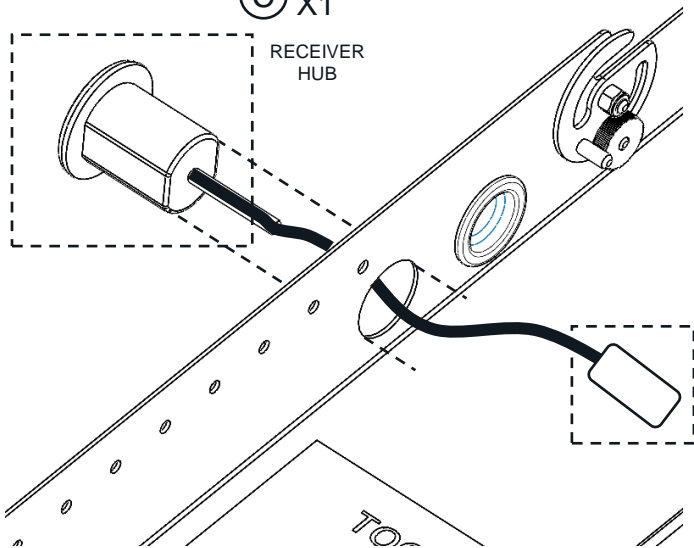


12



13

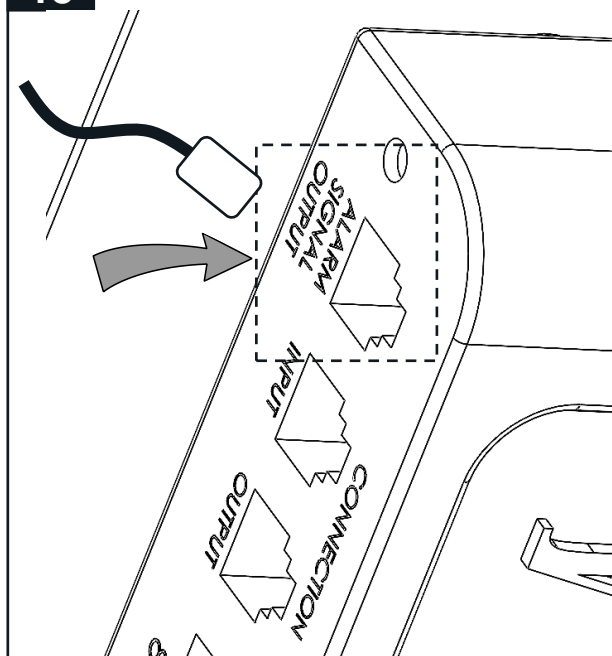
© X1

RECEIVER  
HUB

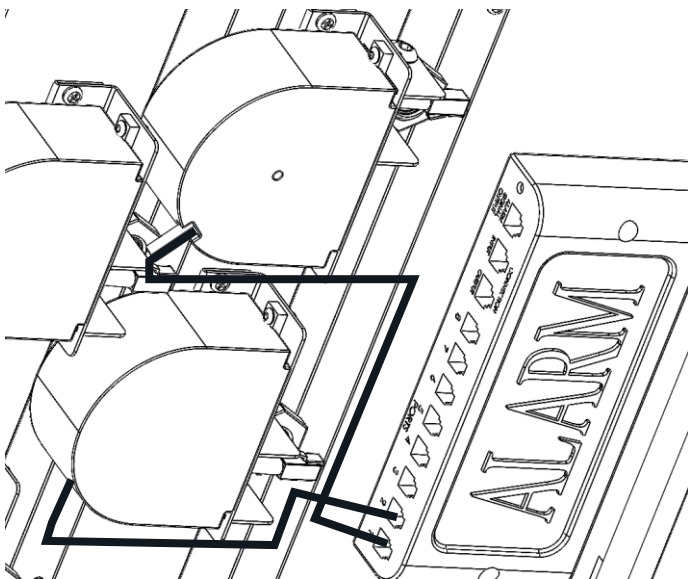
14



15



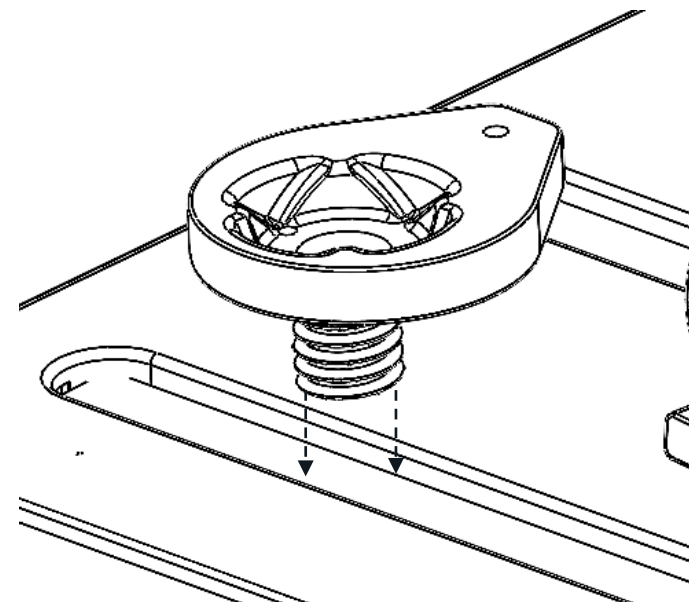
16



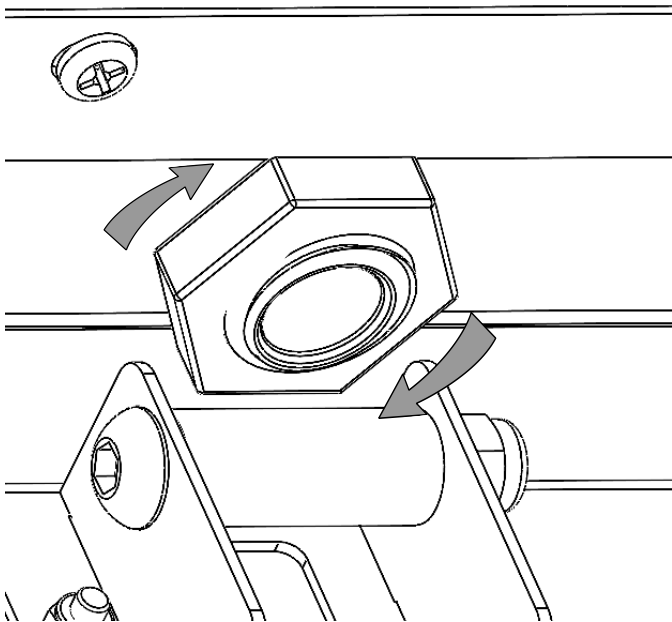
17



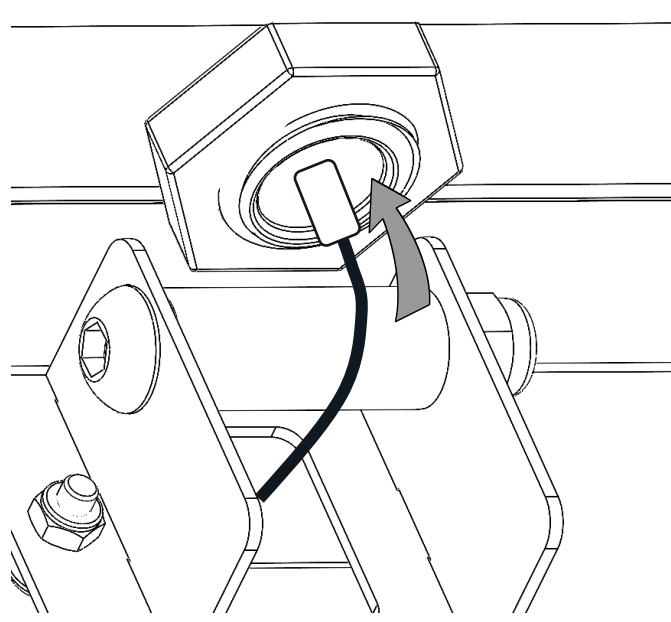
18



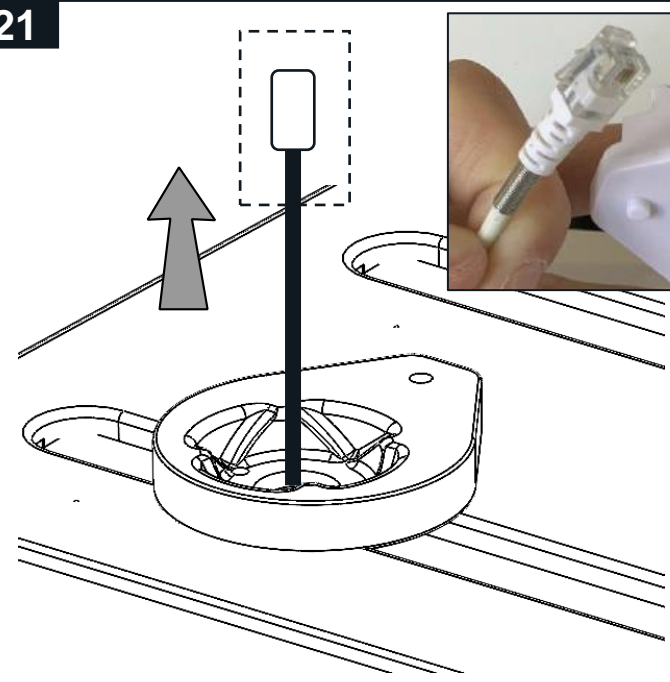
19



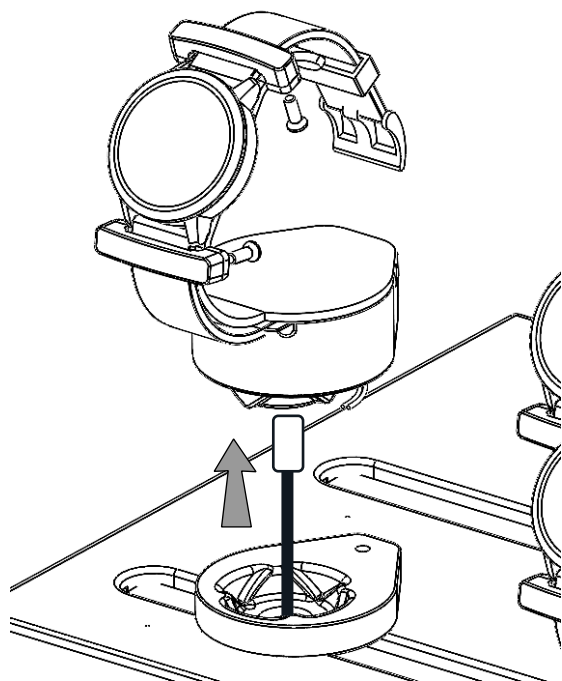
20



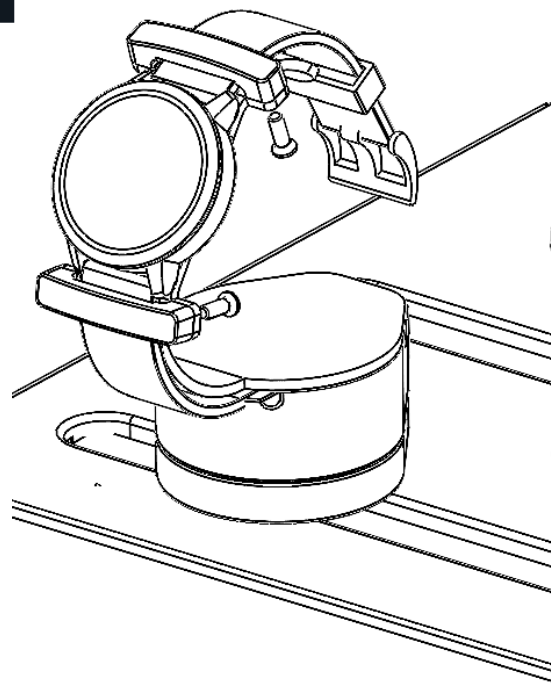
21



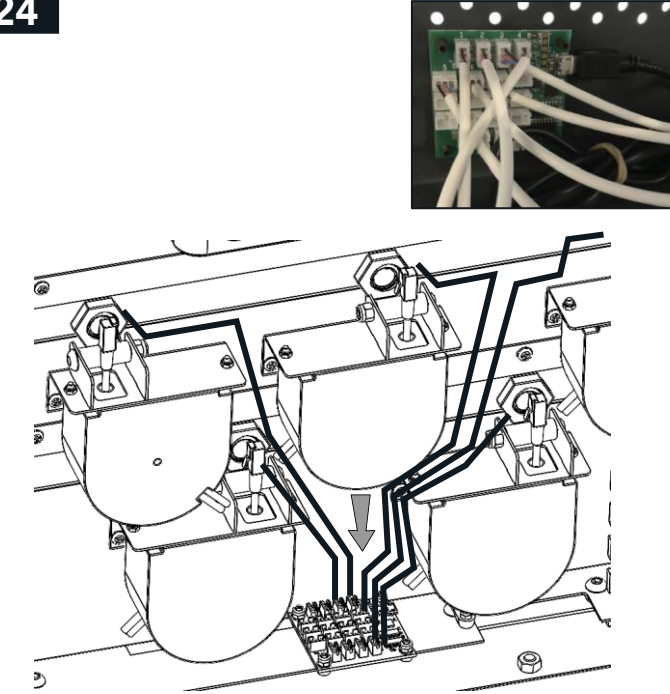
22



23

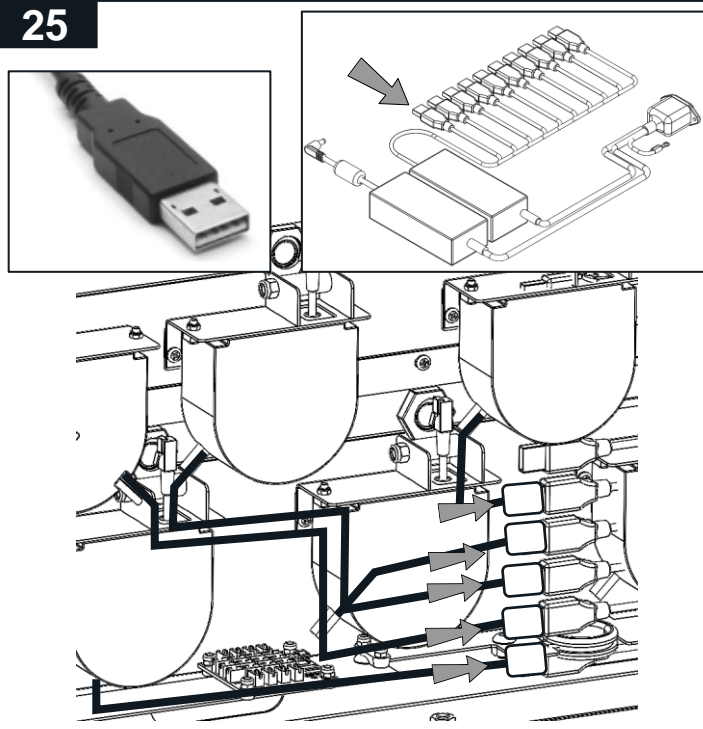


24

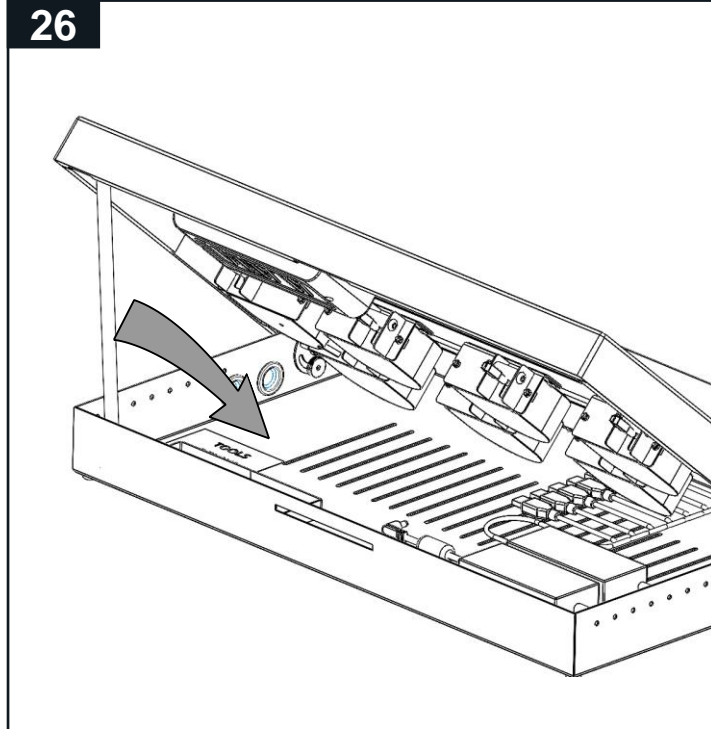




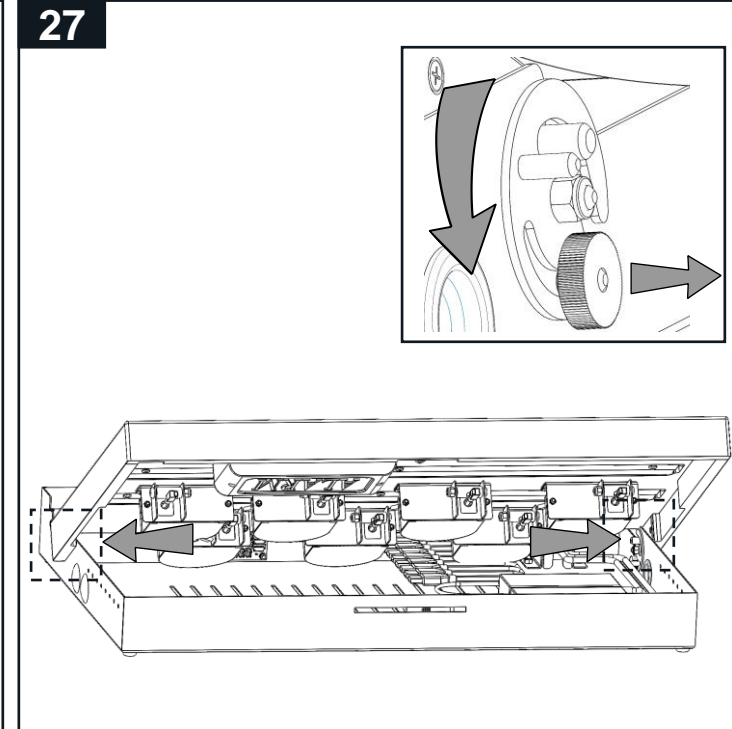
25



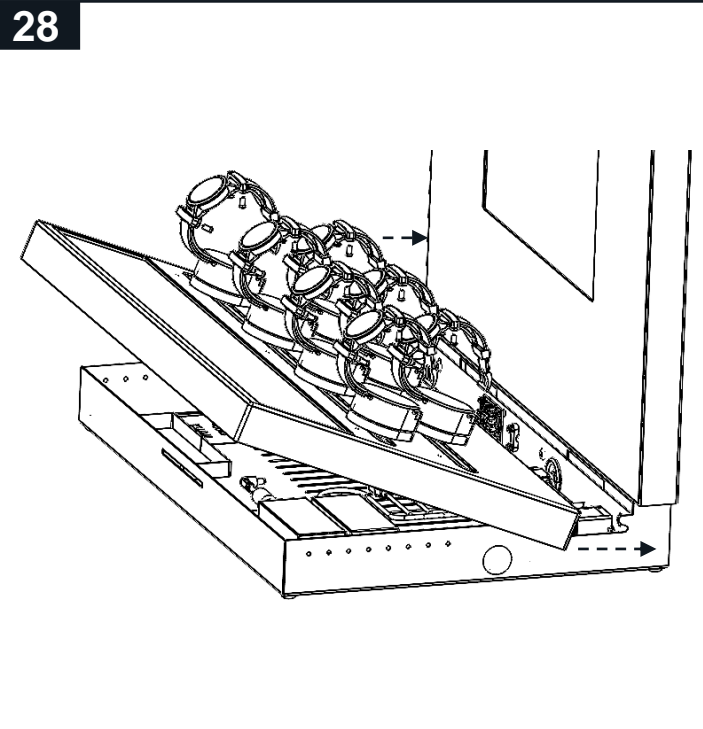
26



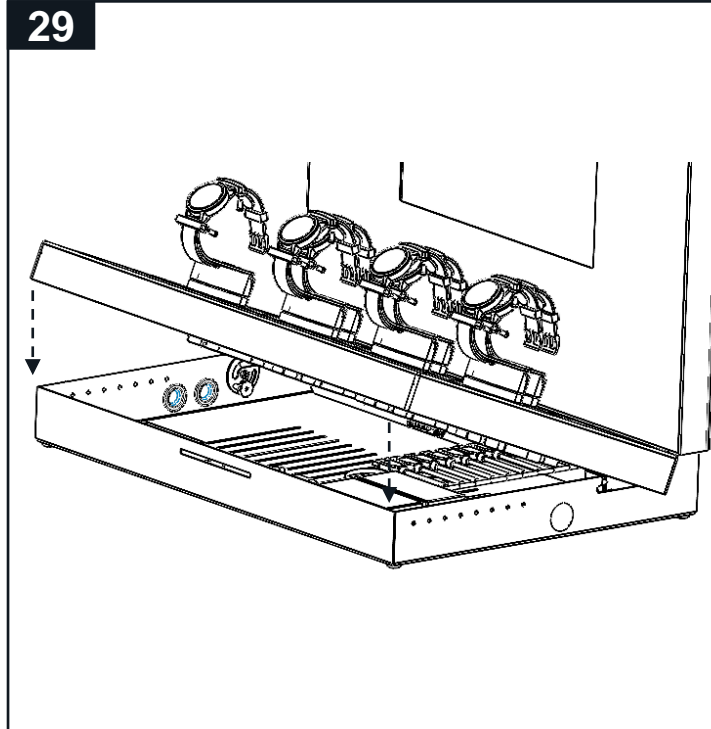
27



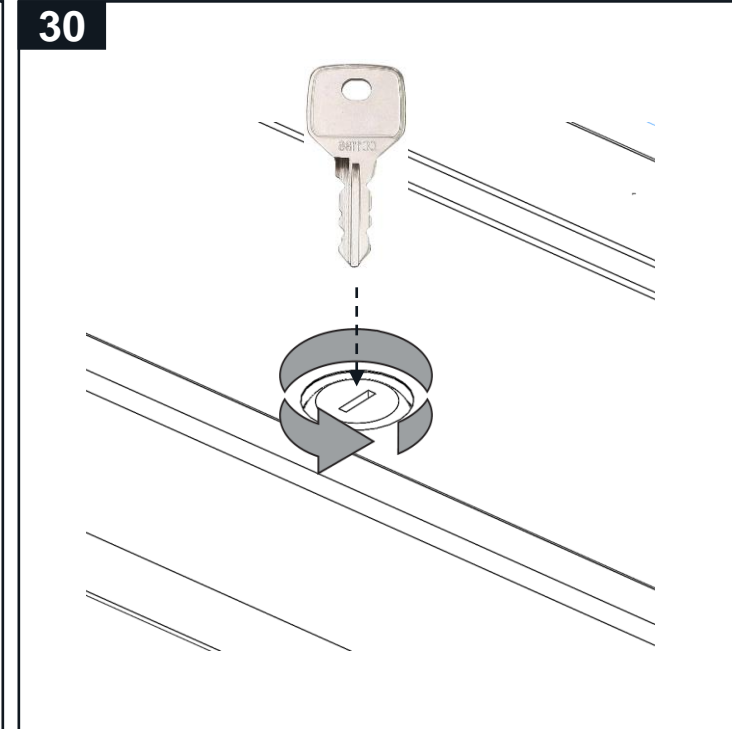
28



29

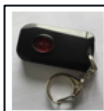
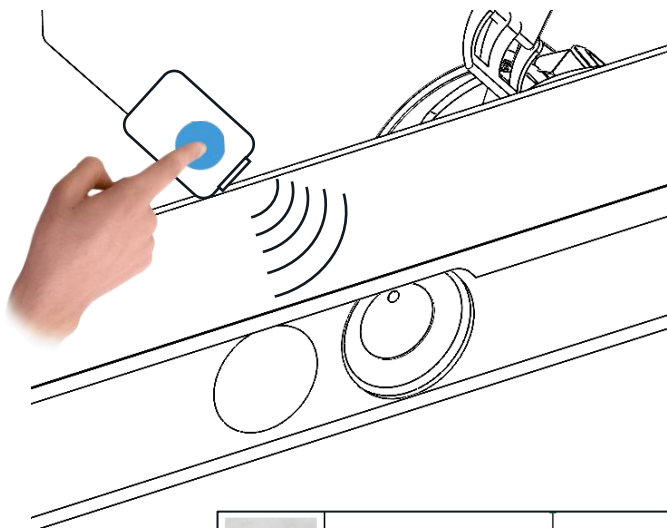


30





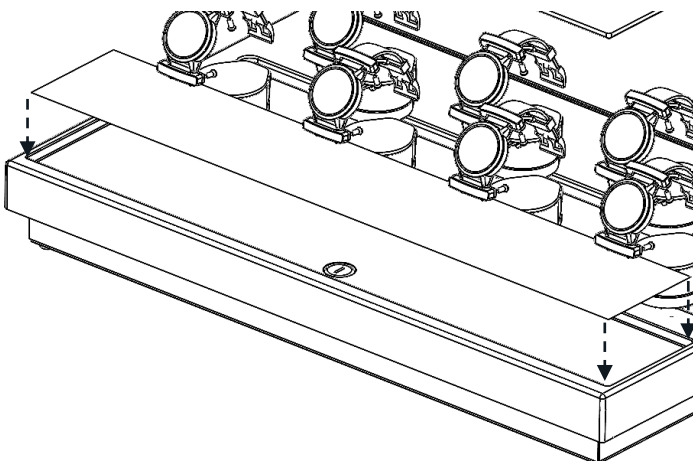
31



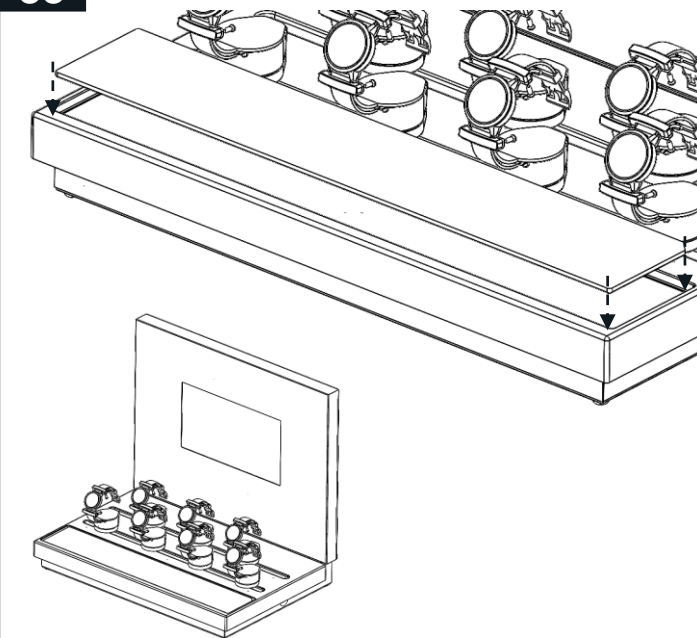
Remote Control (to work with  
Access Control Remote Module)

AS33X

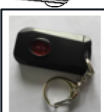
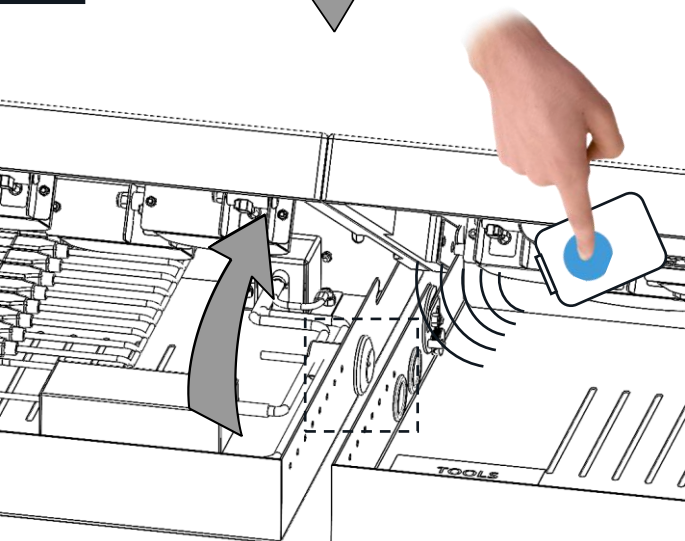
32



33

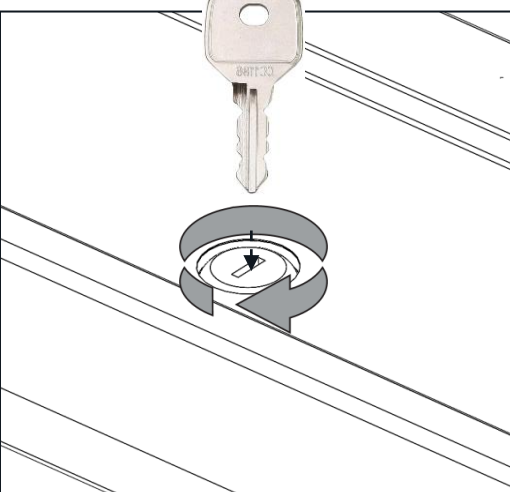


31

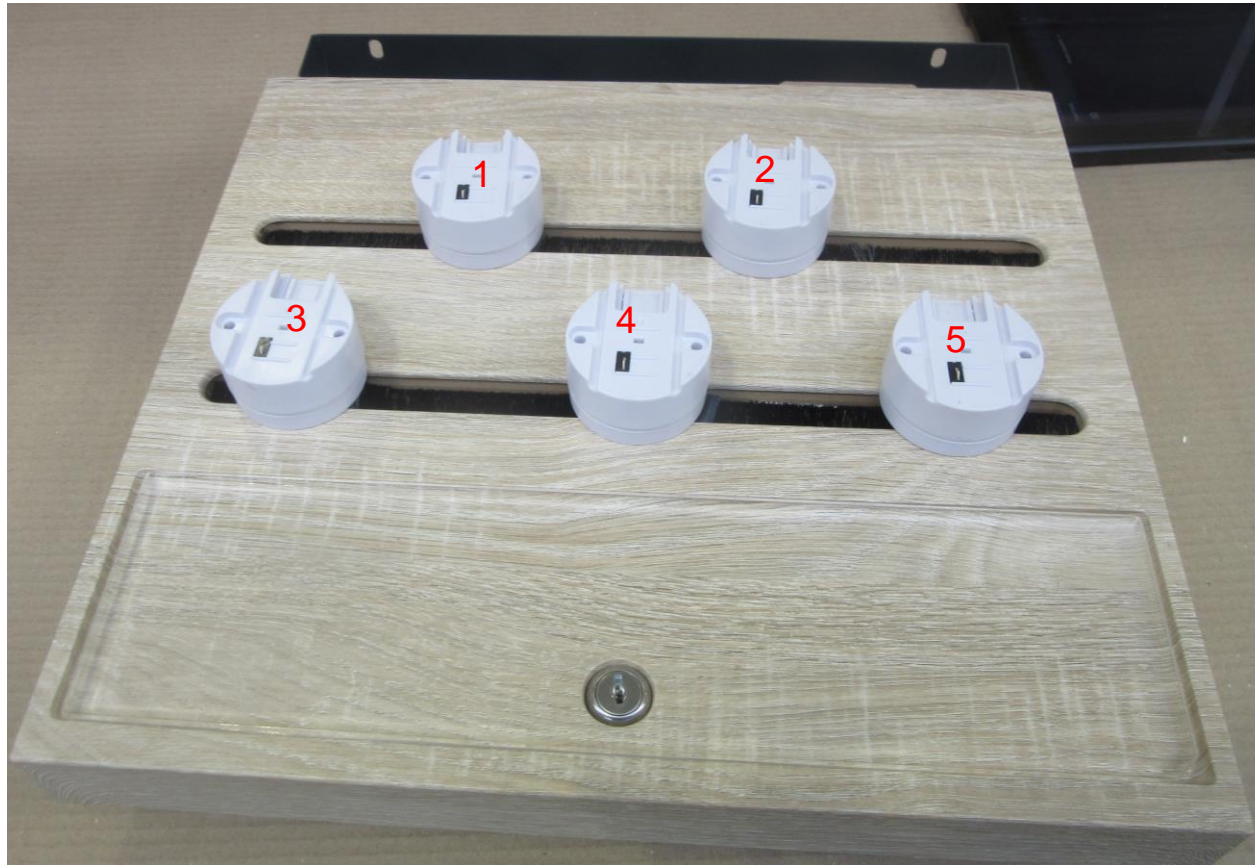


Remote Control (to work with  
Access Control Remote Module)

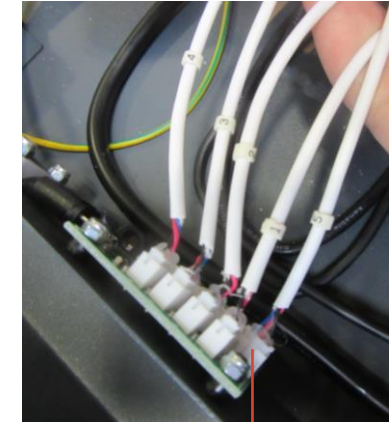
AS33X



Platinum Security  
Lift and Learn function  
Power for live products with USB-C Charging  
Alarm included  
Positions 1-5







Lift and Learn cables  
for PCB board  
numbered 1-5



ENSURE THE SENSOR CABLE FROM SECURITY  
DEVICE 1 IS PLUGGED INTO PORT 1 ON THE PCB,  
AND SO ON FOR THE OTHER SECURITY DEVICES



**IMPORTANT:**  
IF YOU NEED TO REMOVE A SENSOR CABLE  
USE A PAIR OF LONG NOSE PLIERS.  
DO NOT PULL ON THE CABLE