

GARMIN


CORPORATE DISPLAY

P12674

19/11/2024

CTU + ILLUMINATED HEADER + PLATIUM POSTS

TOOLS REQUIRED – SUPPLIED



4MM ALLEN KEY

Parts

A

X1

600MM

B

X1

600MM

C

X1

D

X7

PLATIUM

SECURITY

POSTS

(PRE-FITTED)

E

X5

M6X8MM

SCREW

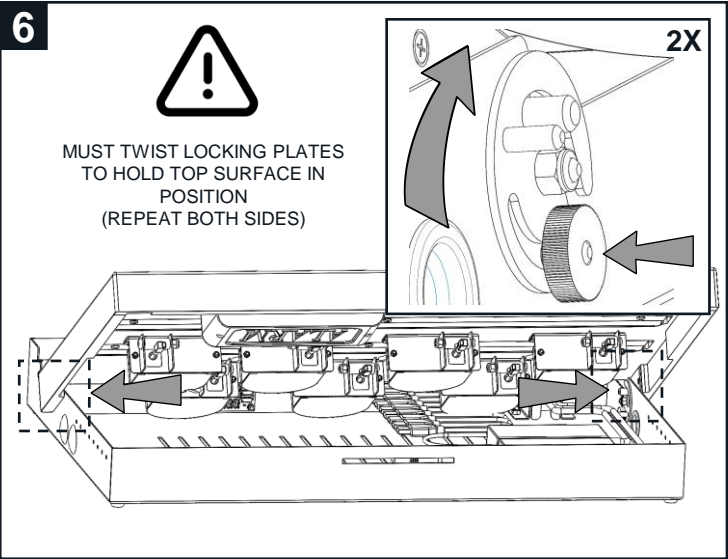
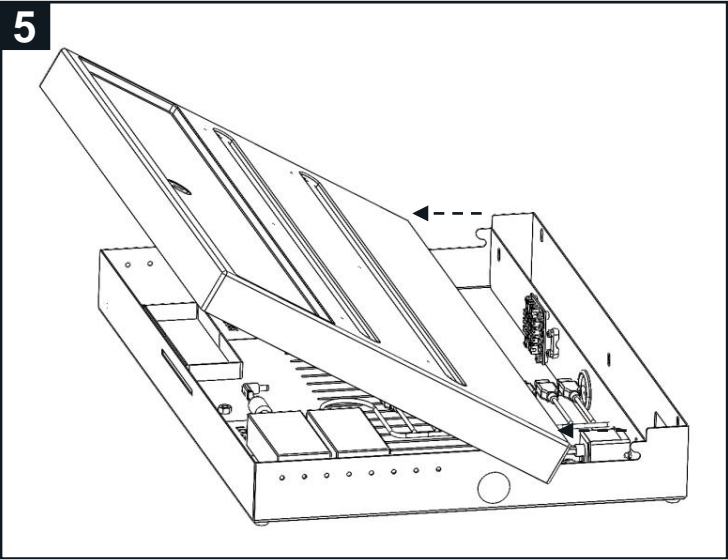
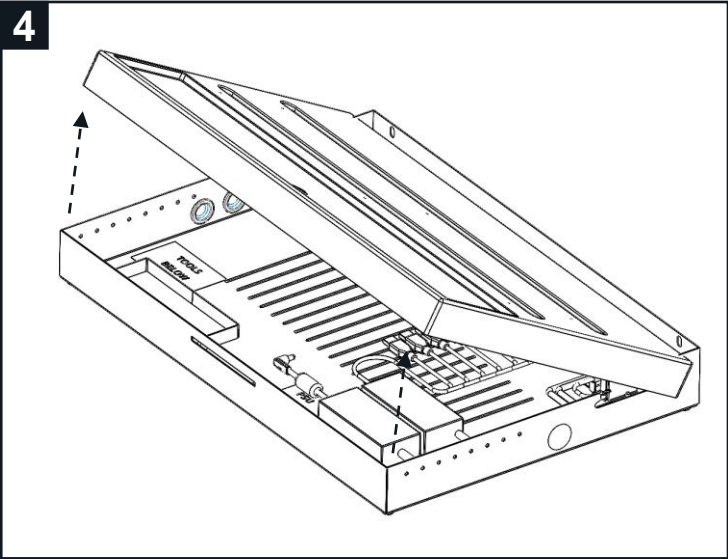
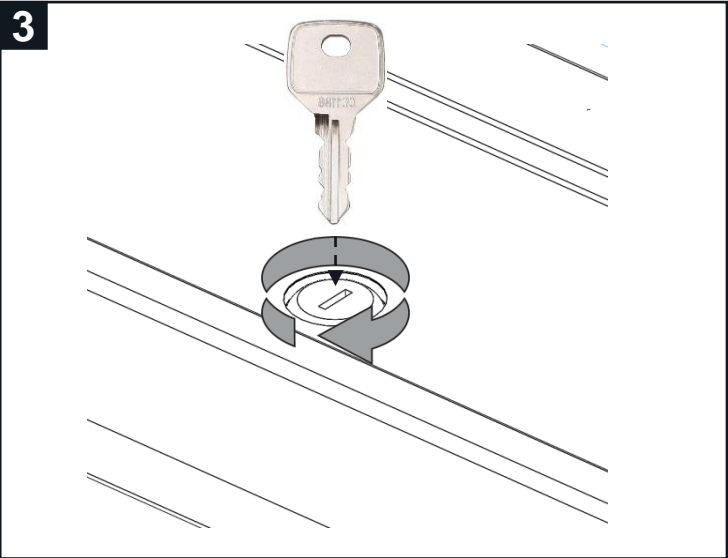
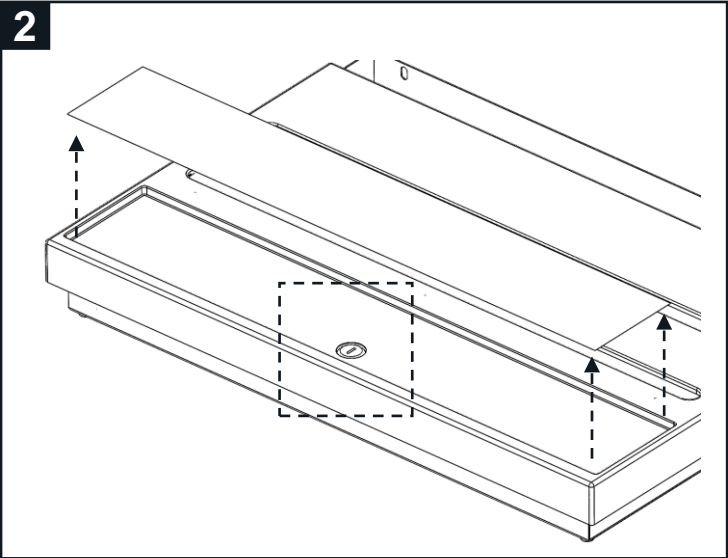
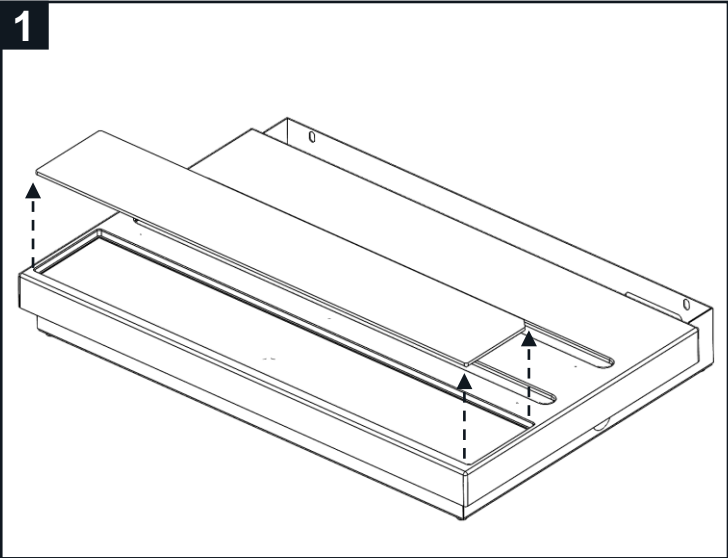
F

X1

Remote Control (to work with

Access Control Remote Module)

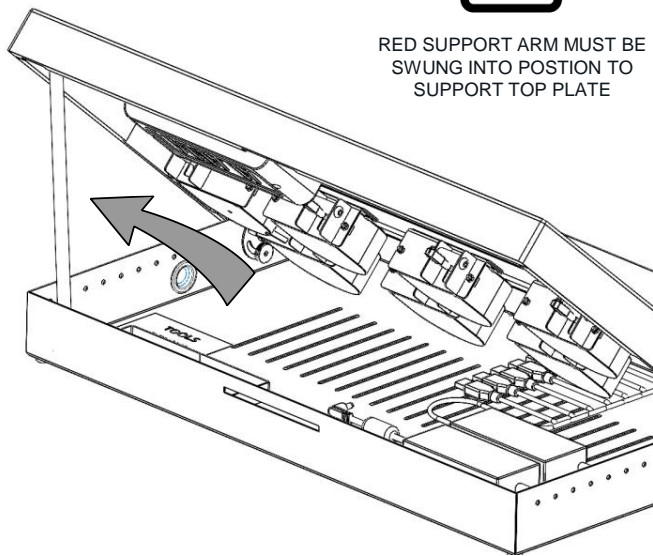
AS33X



7

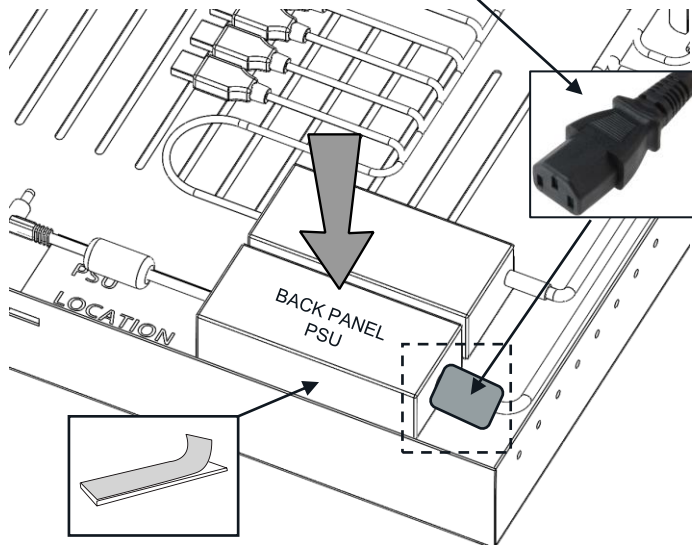


RED SUPPORT ARM MUST BE SWUNG INTO POSITION TO SUPPORT TOP PLATE

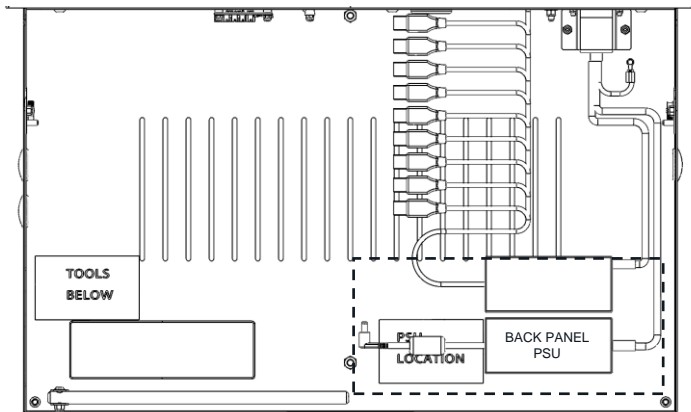


8

IEC PLUG COMING FROM MAIN POWER LOOM ON CTU SECTION

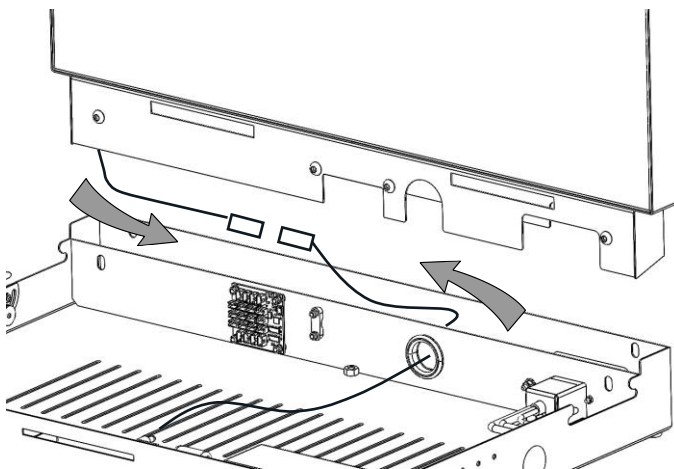


9



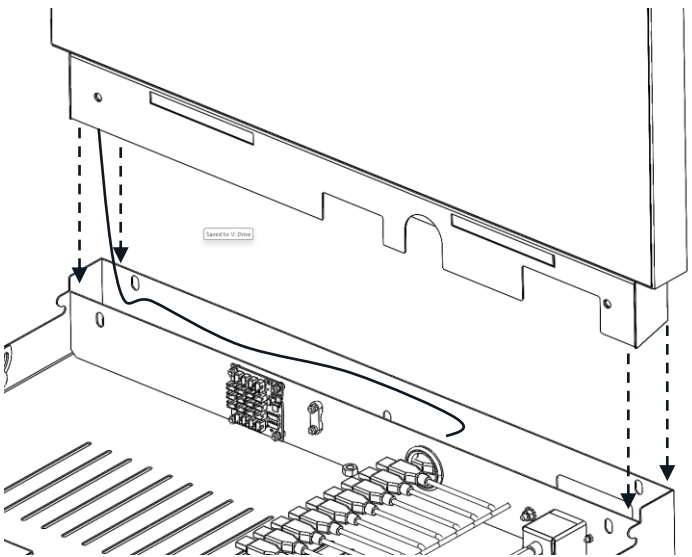
PSUs MUST BE FITTED INTO THIS AREA INSIDE THE DISPLAY

10

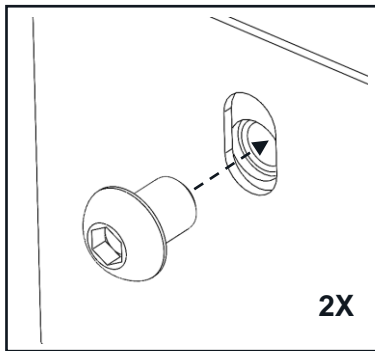


11

(B) X1

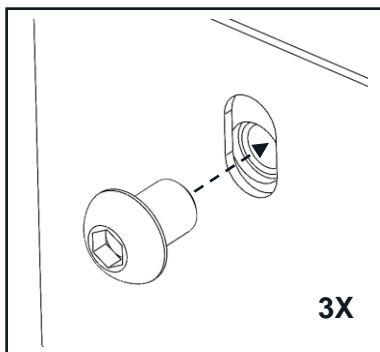


12



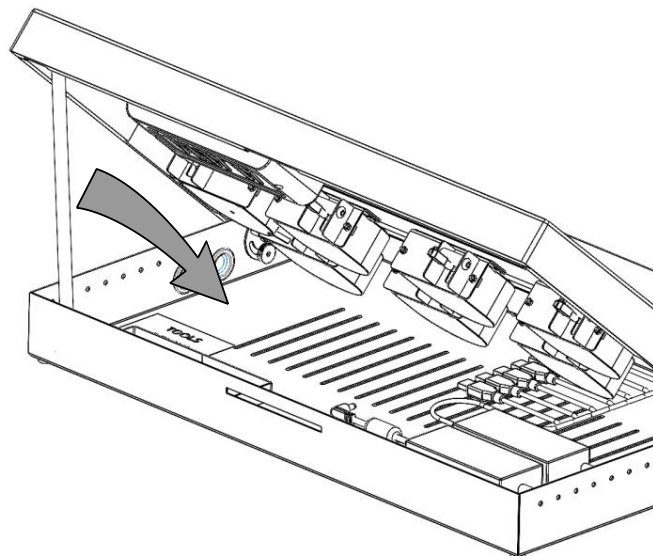
2X

13

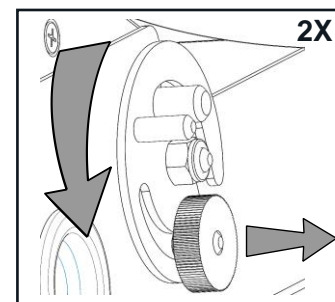


3X

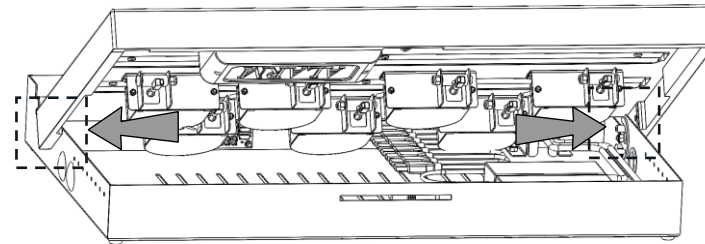
14



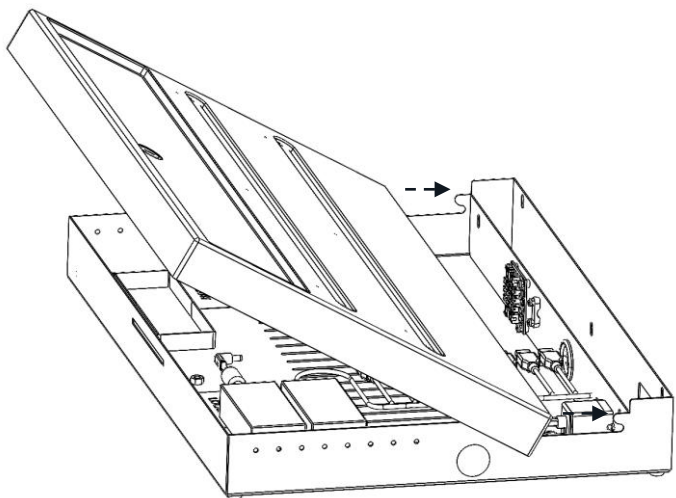
15



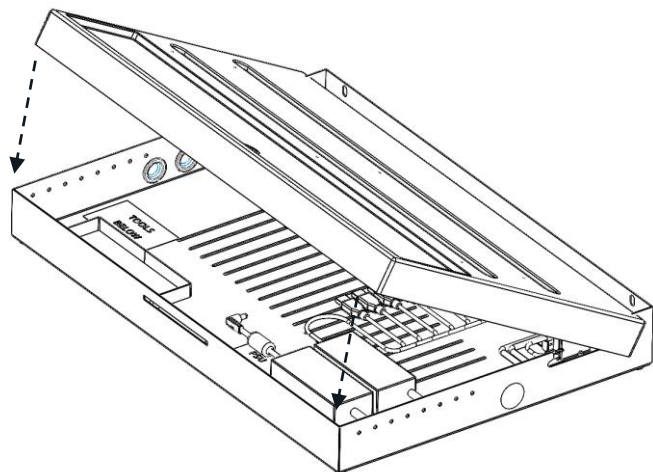
2X



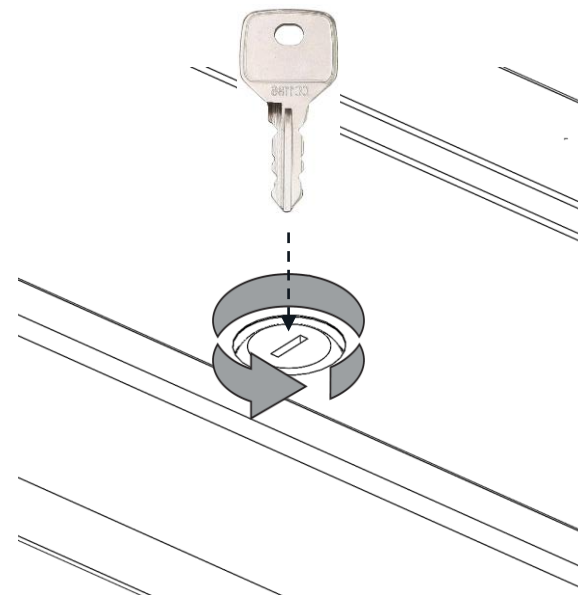
16



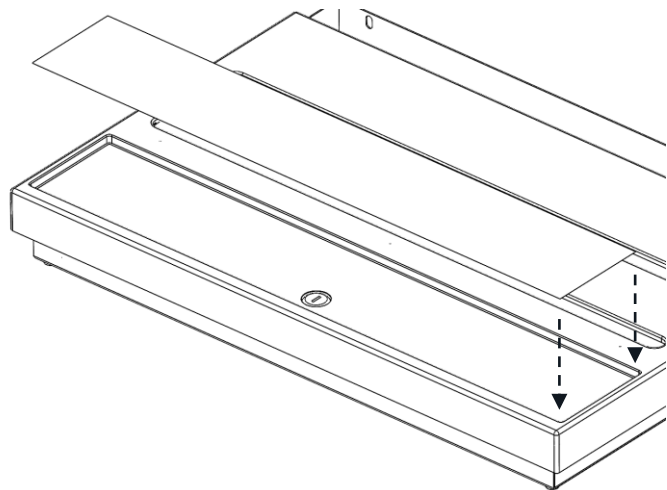
17



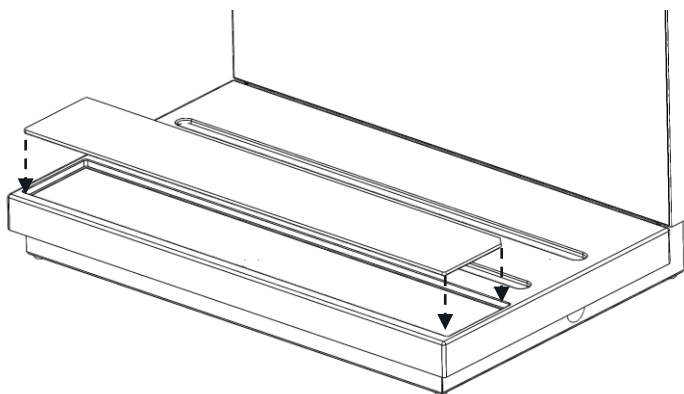
18



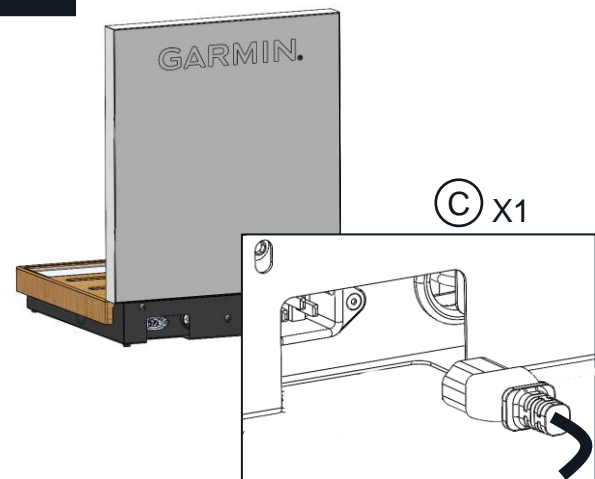
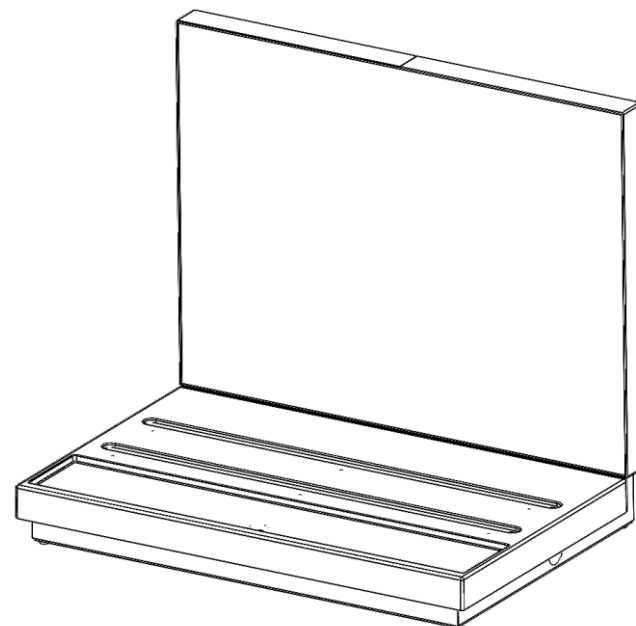
19



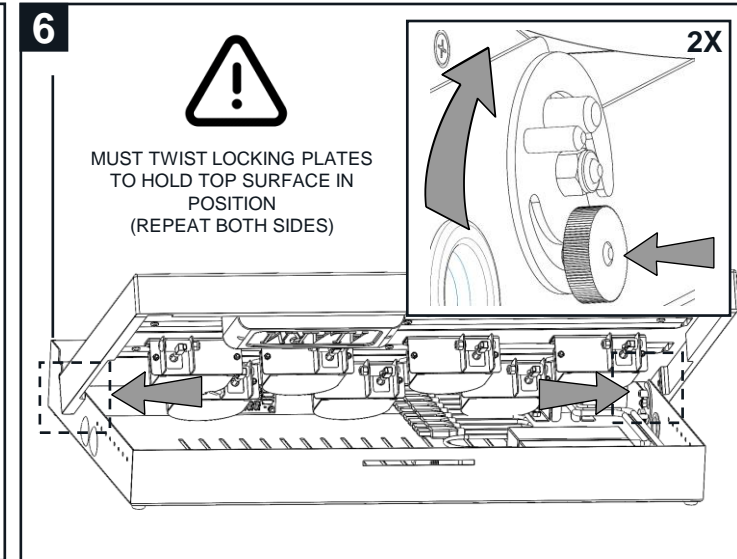
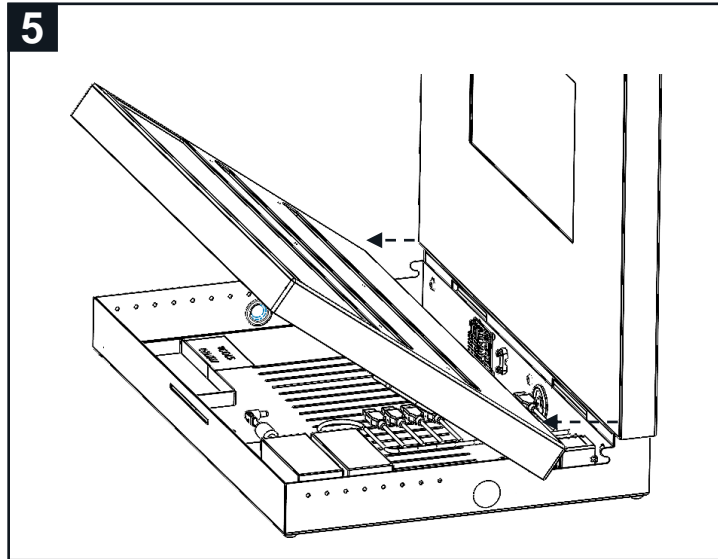
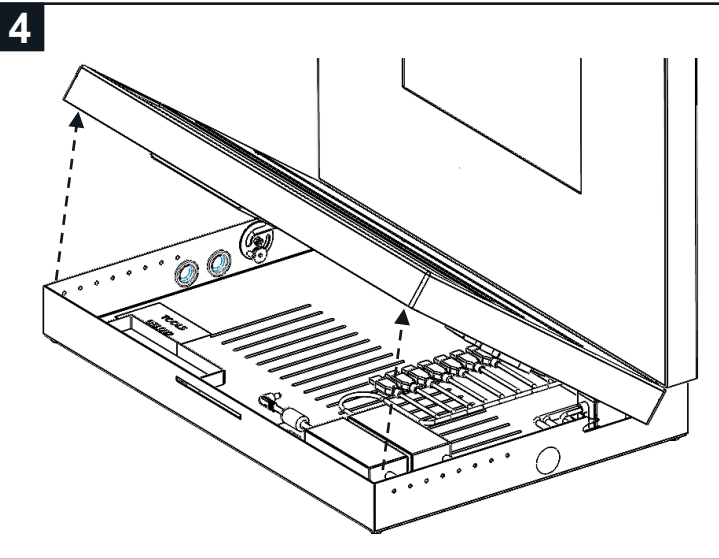
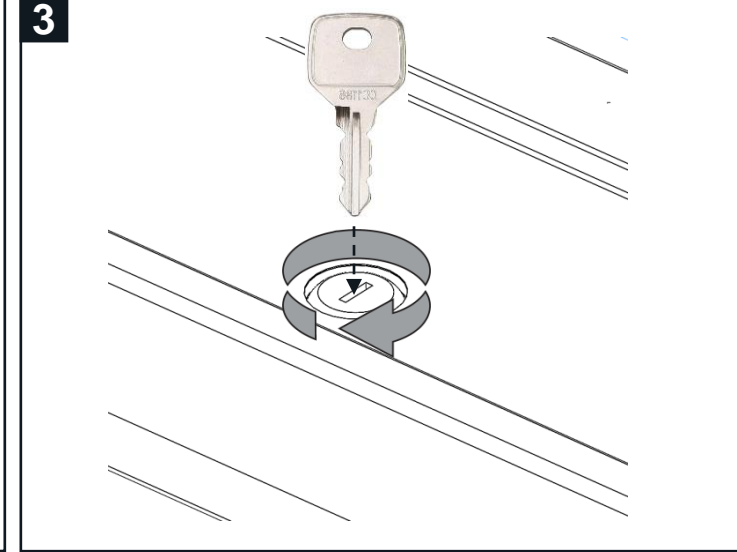
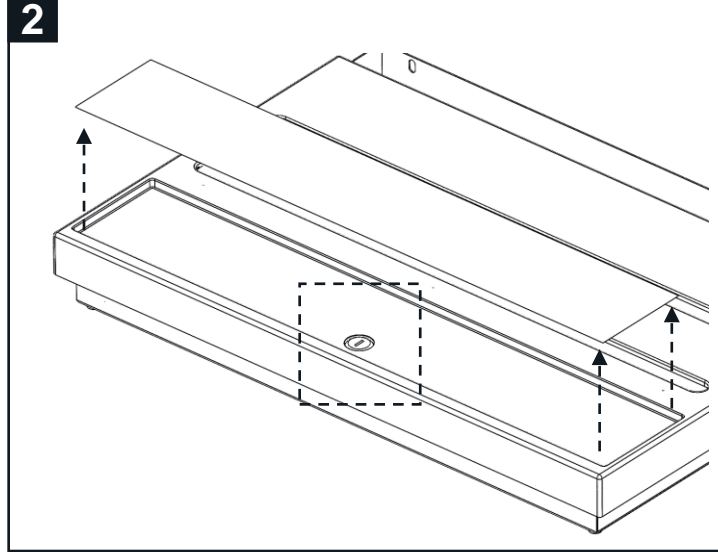
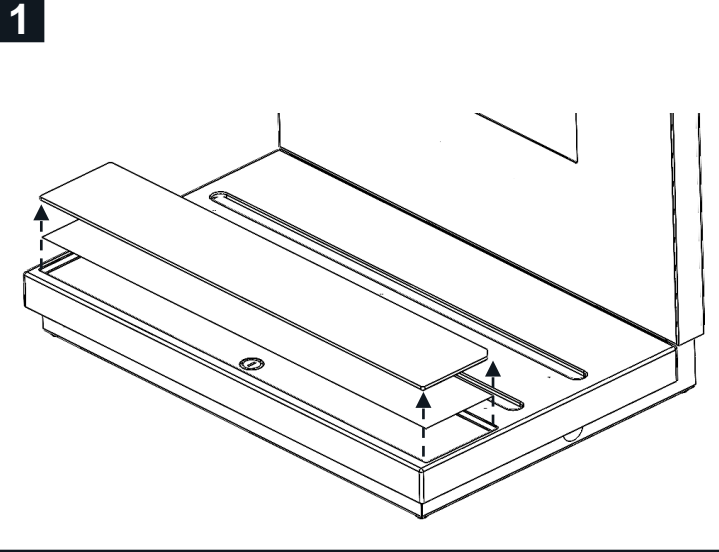
20



21



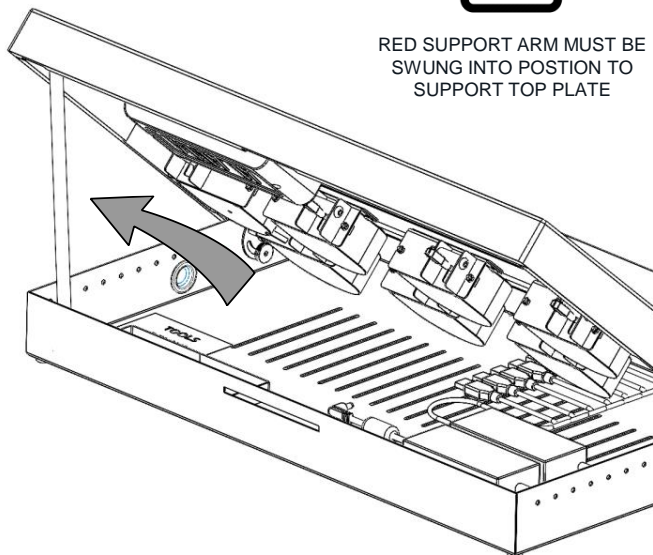
Fitting security to your CTU



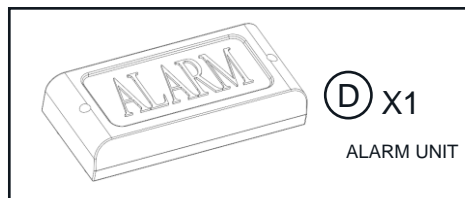
7



RED SUPPORT ARM MUST BE
SWUNG INTO POSITION TO
SUPPORT TOP PLATE

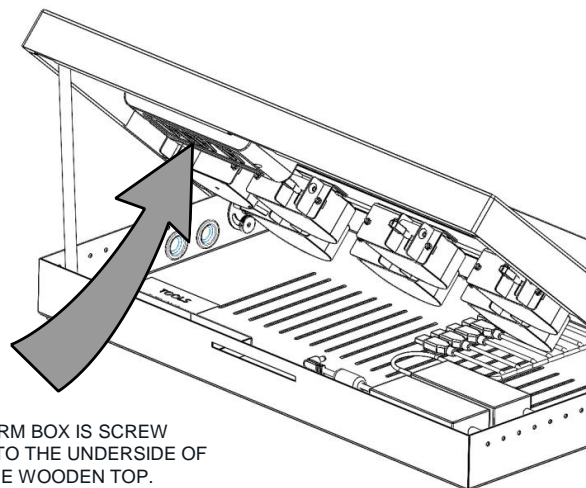


8



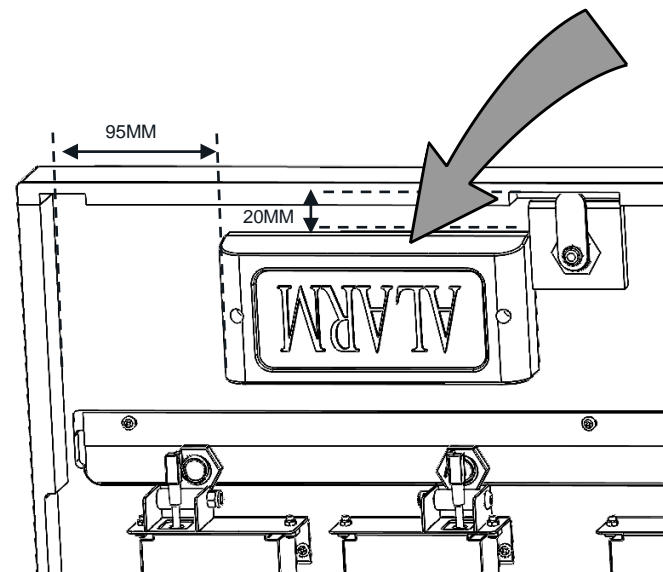
D X1

ALARM UNIT

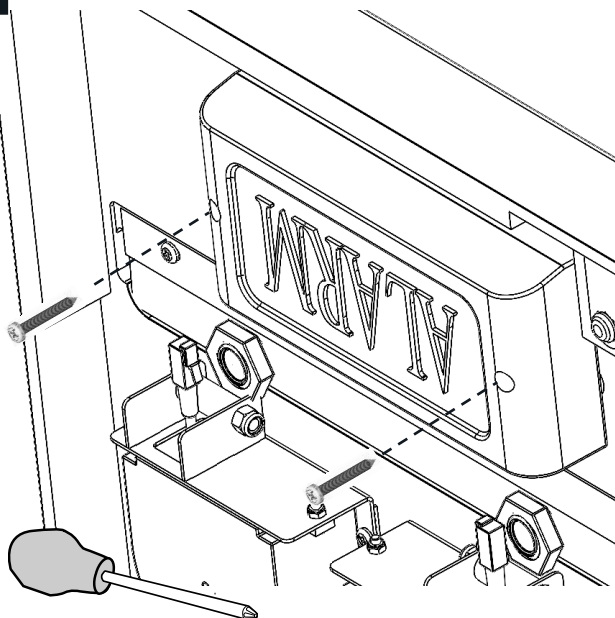


ALARM BOX IS SCREW
FITTED TO THE UNDERSIDE OF
THE WOODEN TOP.

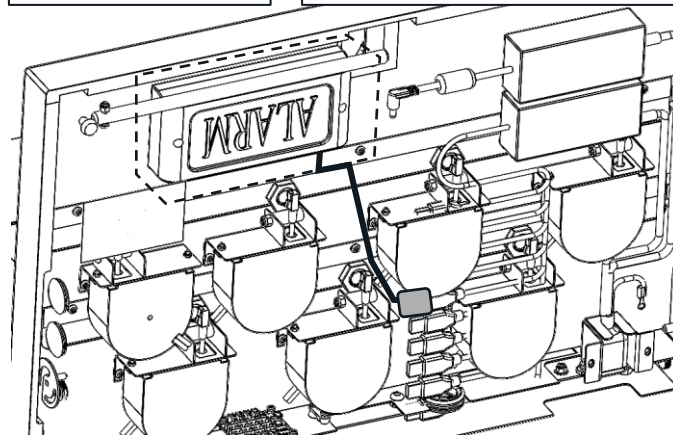
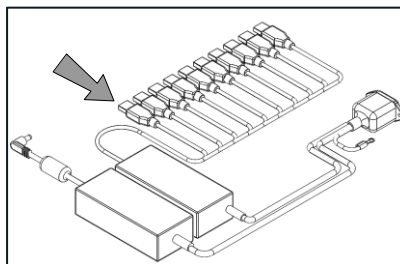
9



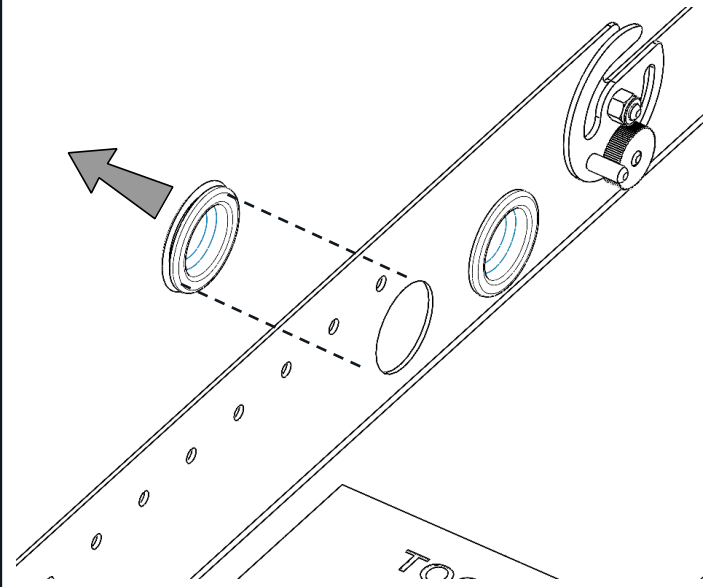
10



11

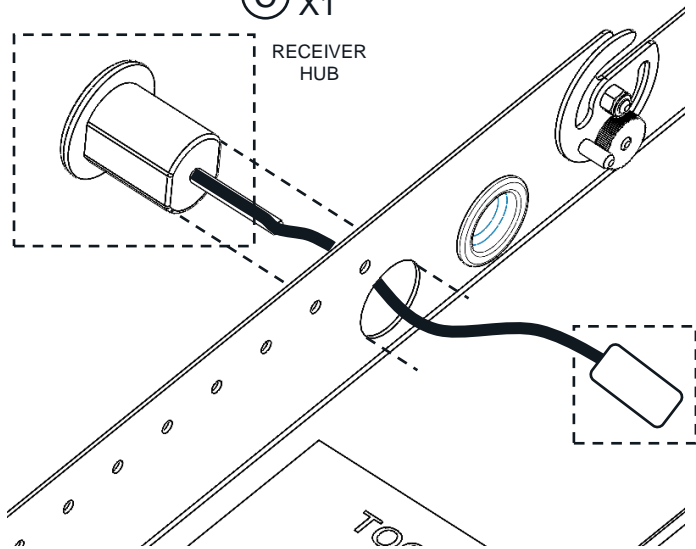


12



13

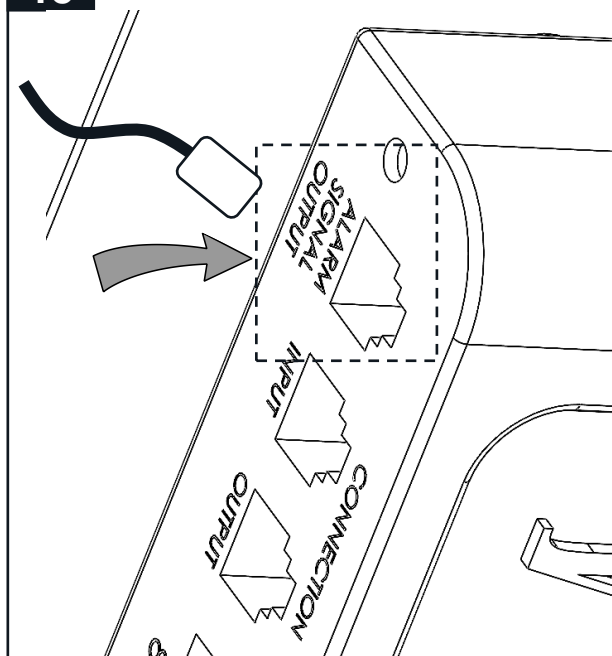
© X1

RECEIVER
HUB

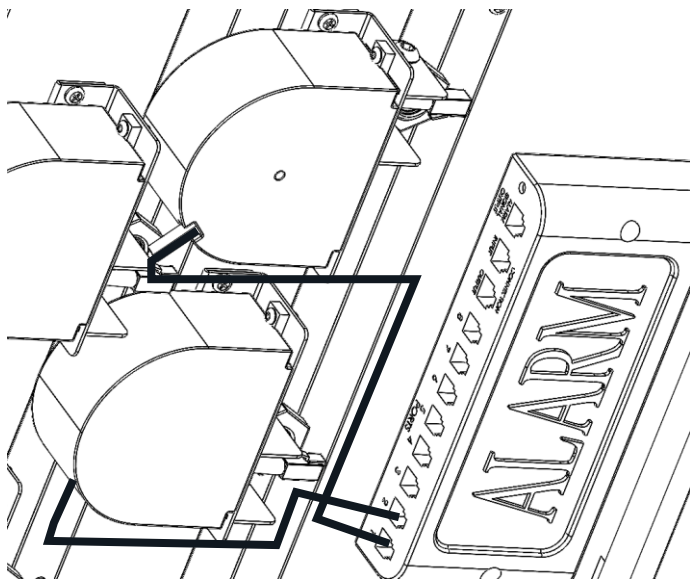
14



15



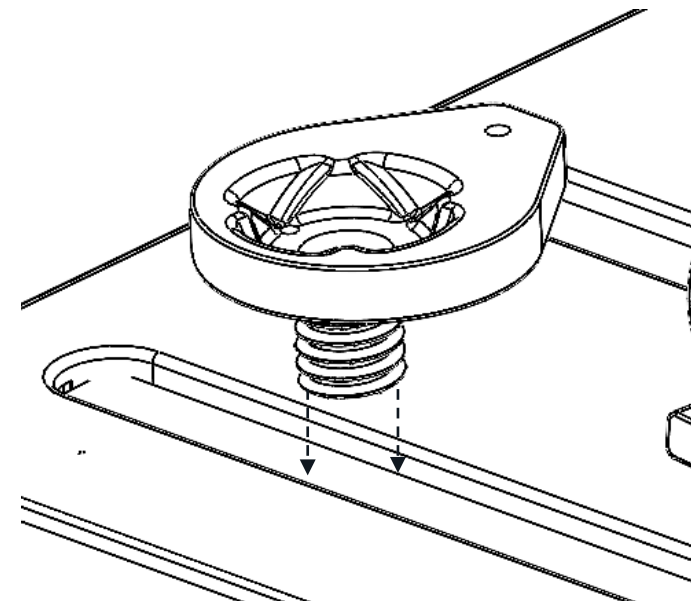
16



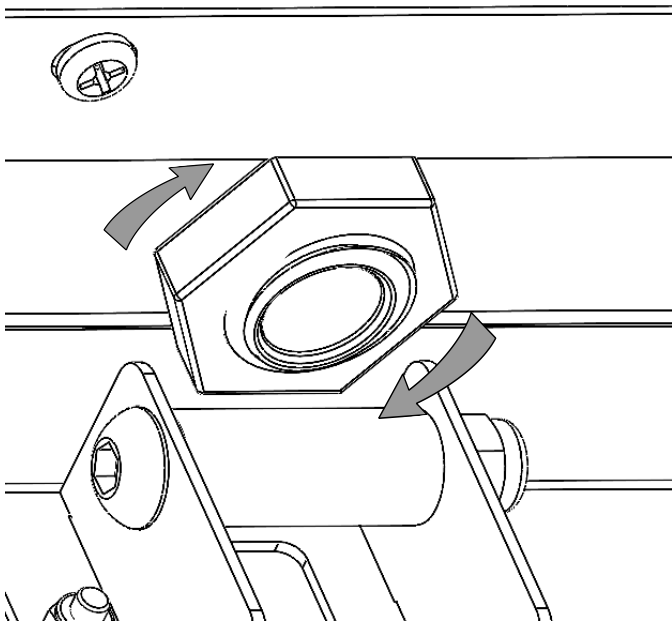
17



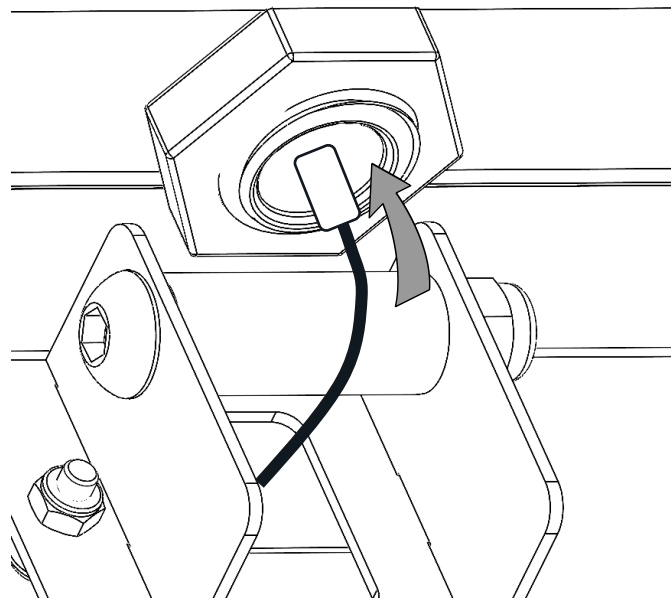
18



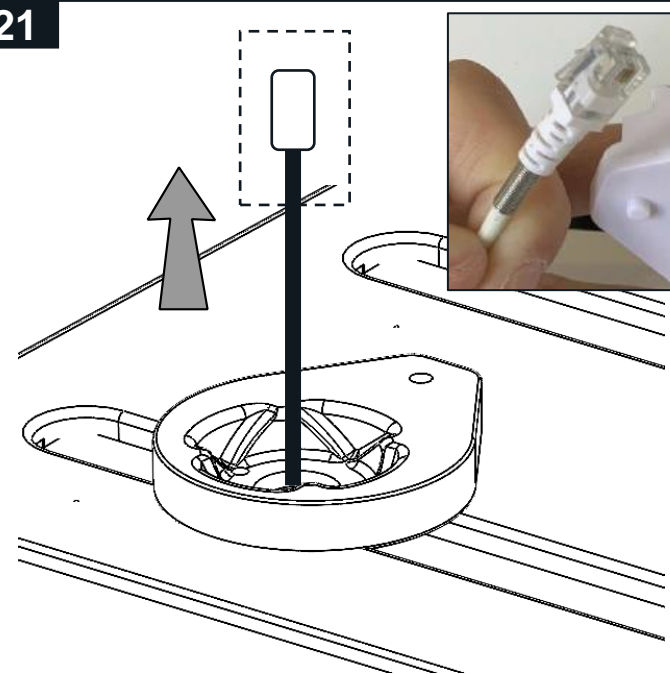
19



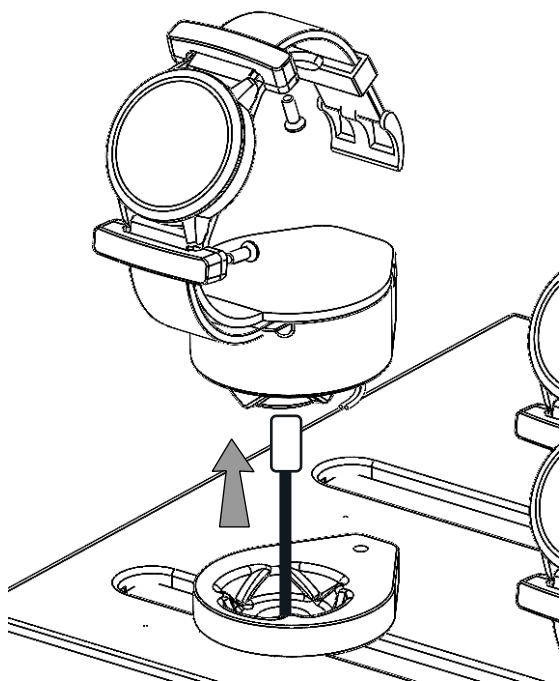
20



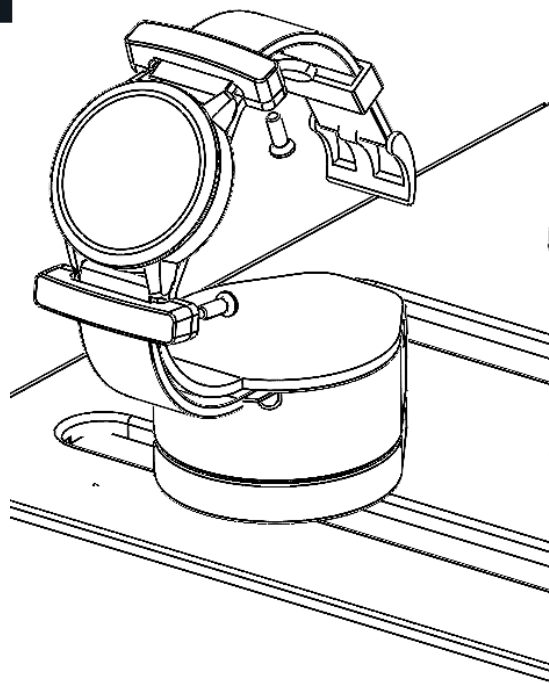
21



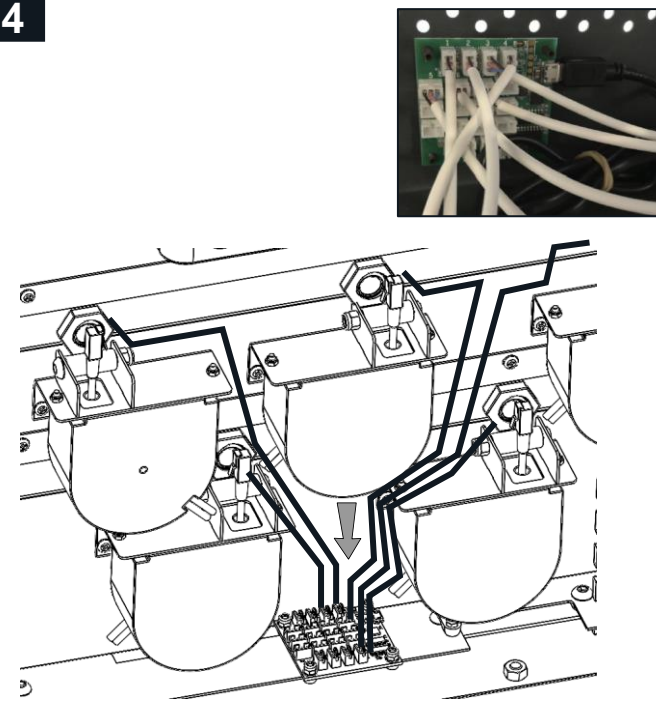
22



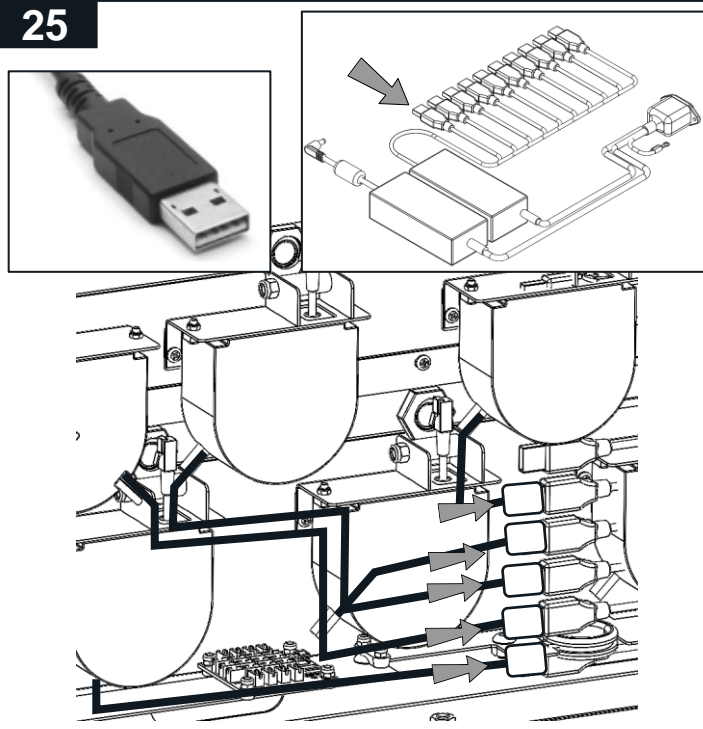
23



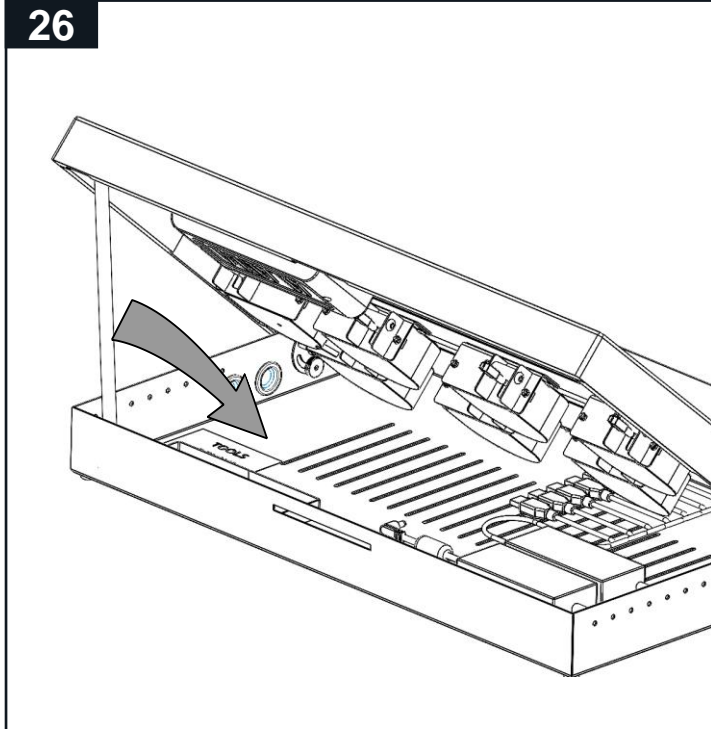
24



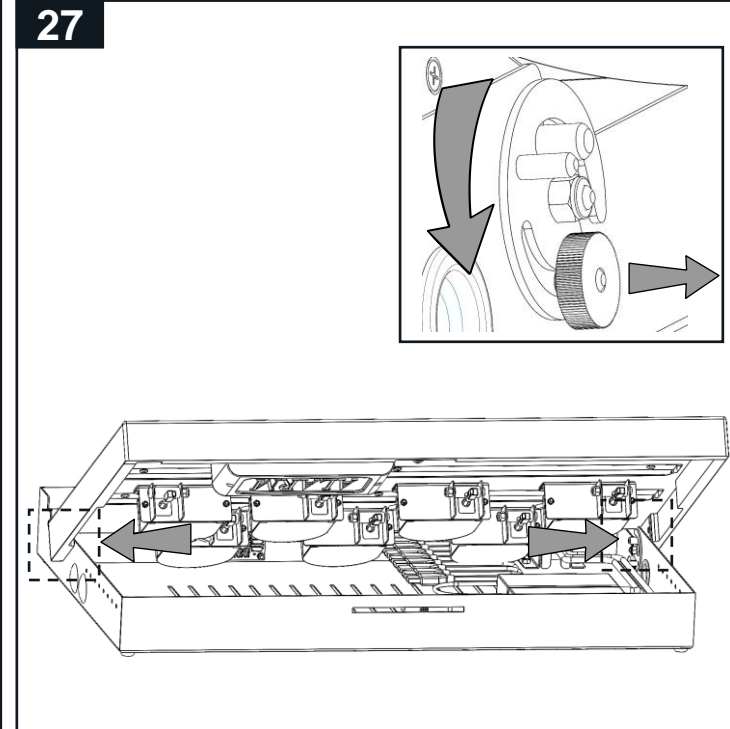
25



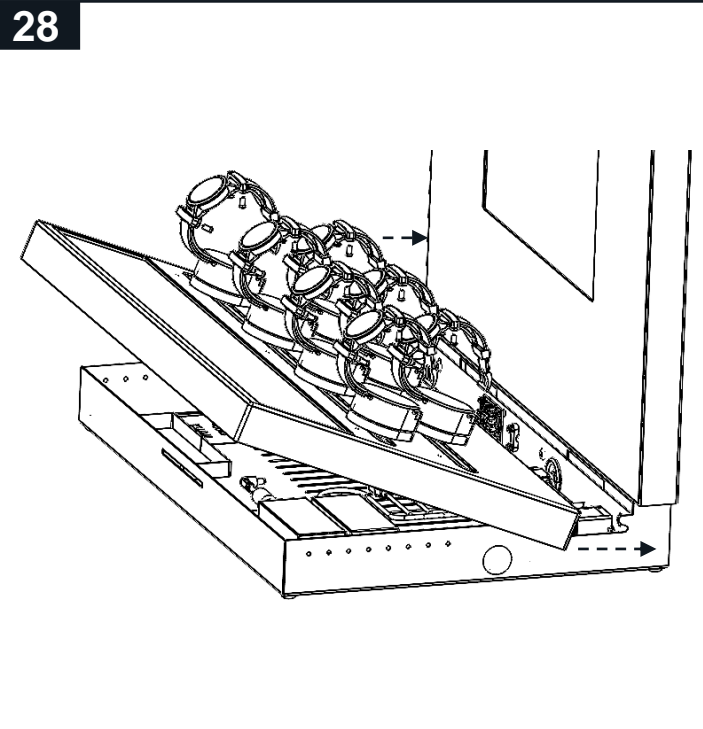
26



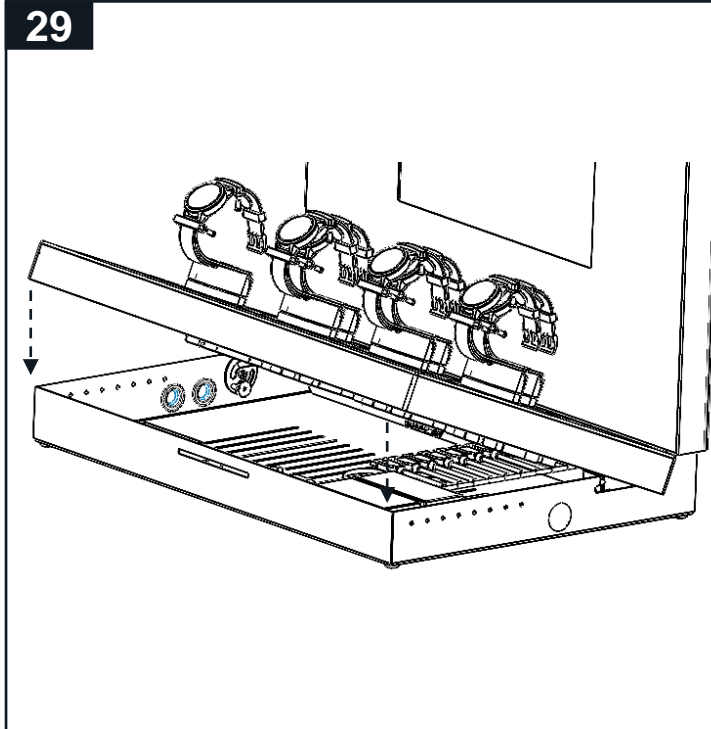
27



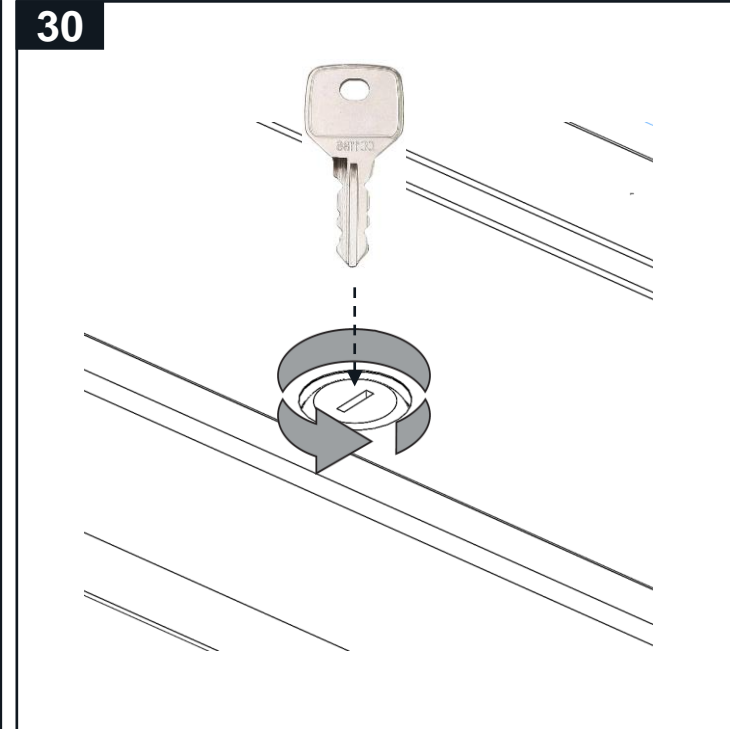
28



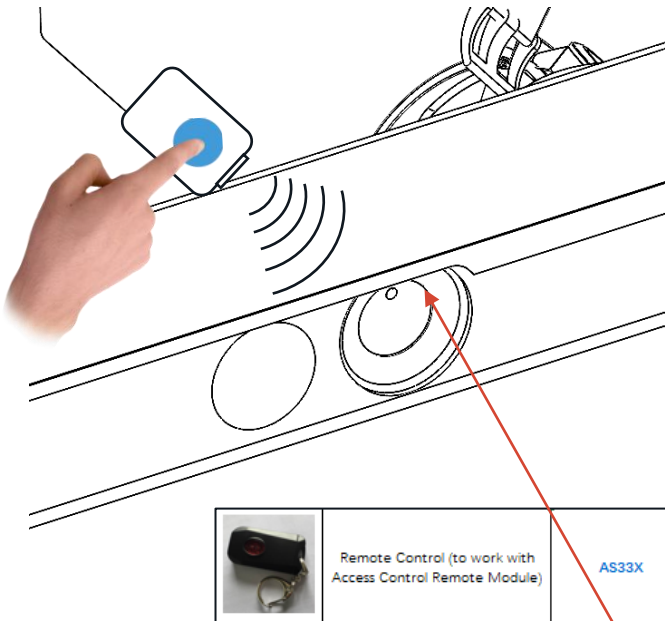
29



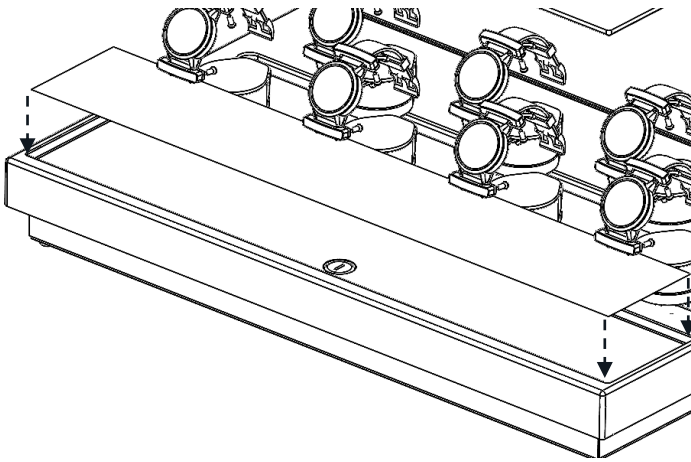
30



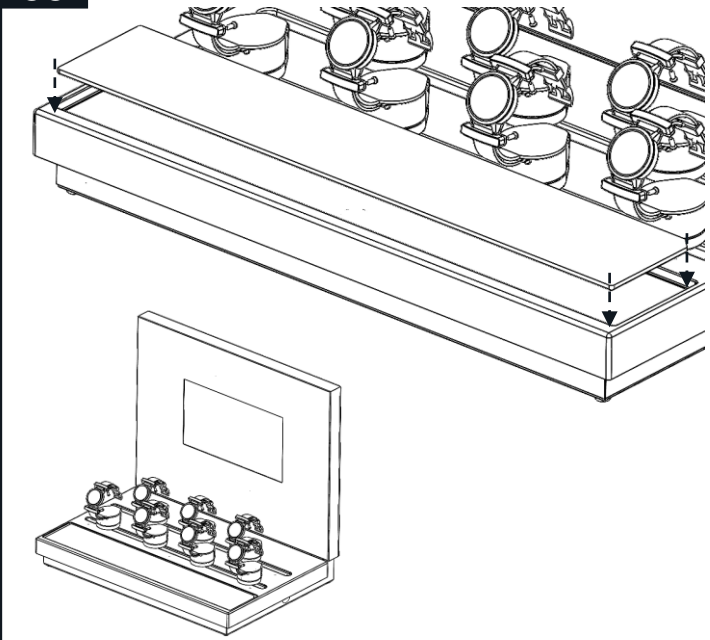
31



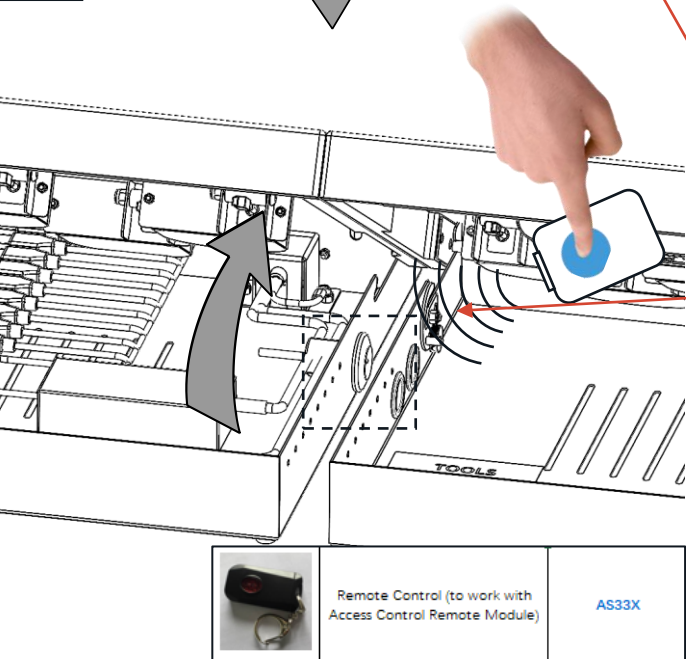
32



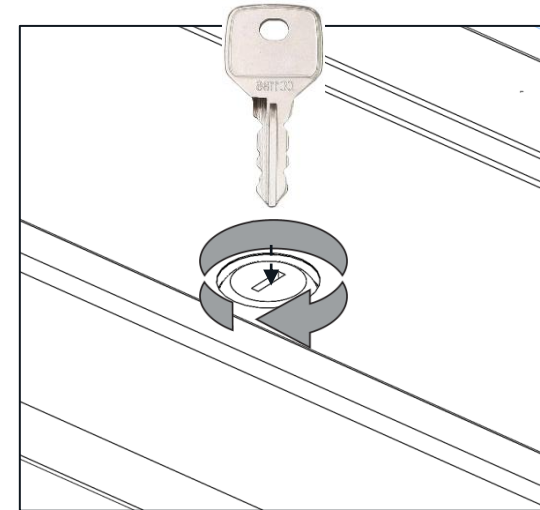
33



31

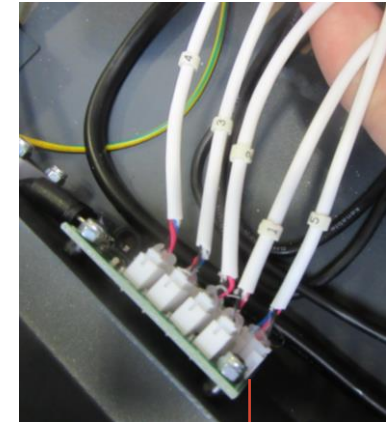
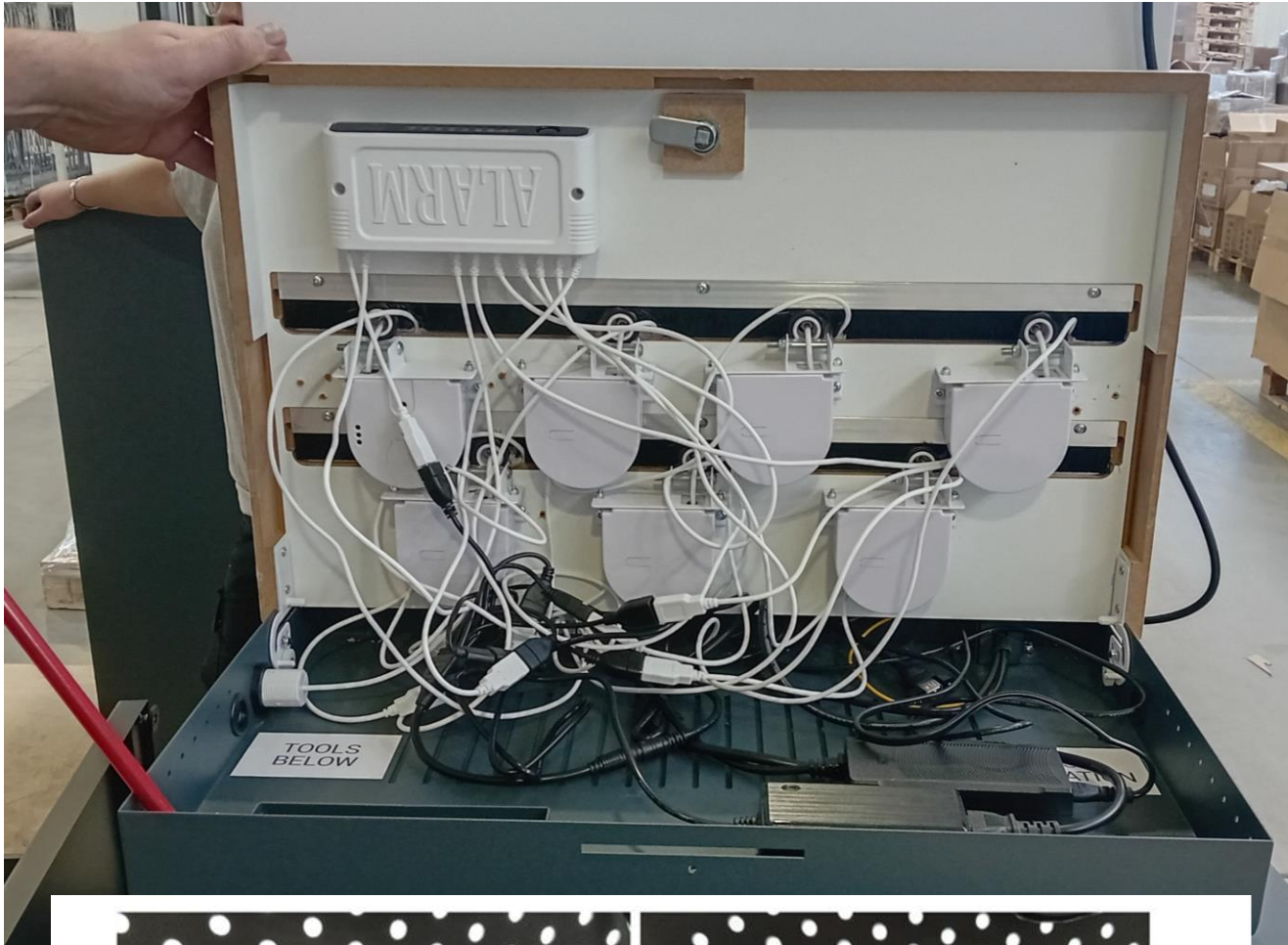


The alarm sensor is on the LHS of the 600 CTU

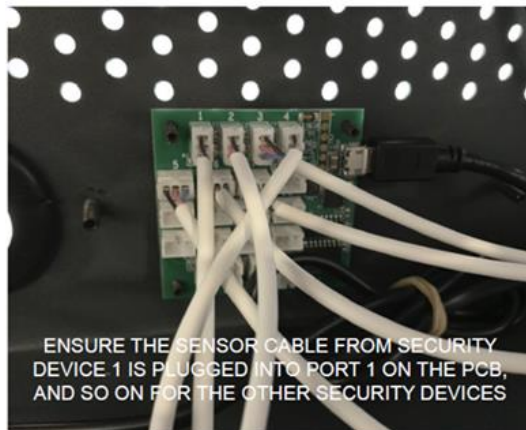


Platinum Security
Lift and Learn function
Power for live products with
USB-C Charging
Alarm included
Positions 1-7





Lift and Learn cables
for PCB board
numbered 1-7



ENSURE THE SENSOR CABLE FROM SECURITY
DEVICE 1 IS PLUGGED INTO PORT 1 ON THE PCB,
AND SO ON FOR THE OTHER SECURITY DEVICES



IMPORTANT:
IF YOU NEED TO REMOVE A SENSOR CABLE
USE A PAIR OF LONG NOSE PLIERS.
DO NOT PULL ON THE CABLE