

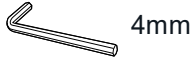
GARMIN

MID UNITS 800 ADJOINING
BACK PANEL

P11274 | SEPT 21

ASSEMBLY DIAGRAM

Tools Required - Supplied

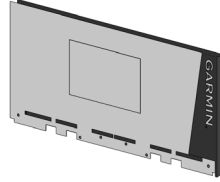


Parts

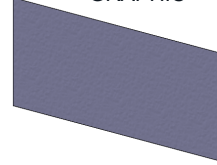
(A) X2
400 CTU



(C) X1
1000 BACK PANEL



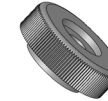
(D) X1
1000 MAG
GRAPHIC



(E) X12
SCREWS



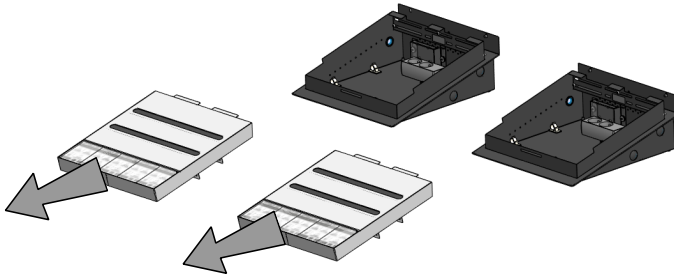
(F) X3
THUMB
NUTS



(G) X1

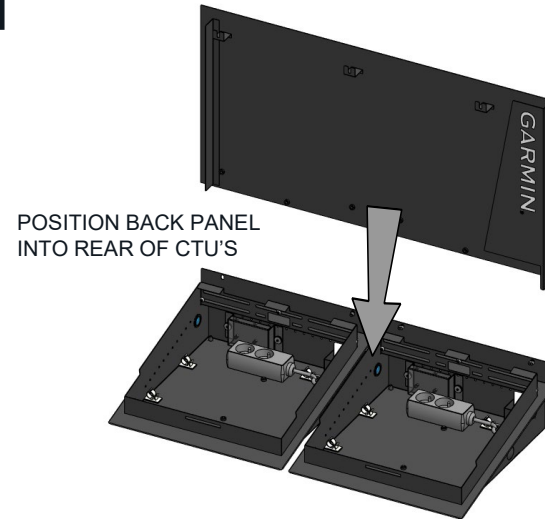


1



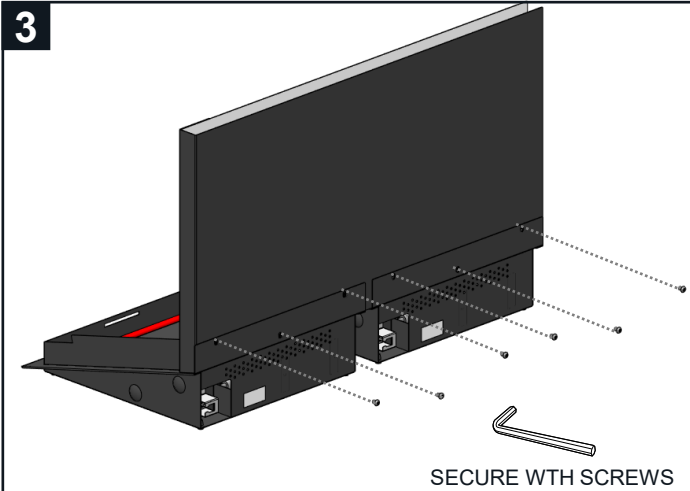
REMOVE TOP PANEL ASSEMBLIES

2



POSITION BACK PANEL
INTO REAR OF CTU'S

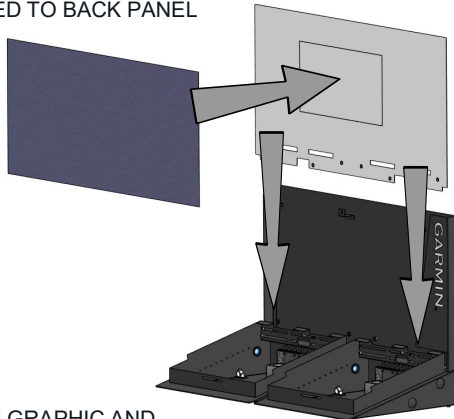
3



SECURE WITH SCREWS

4

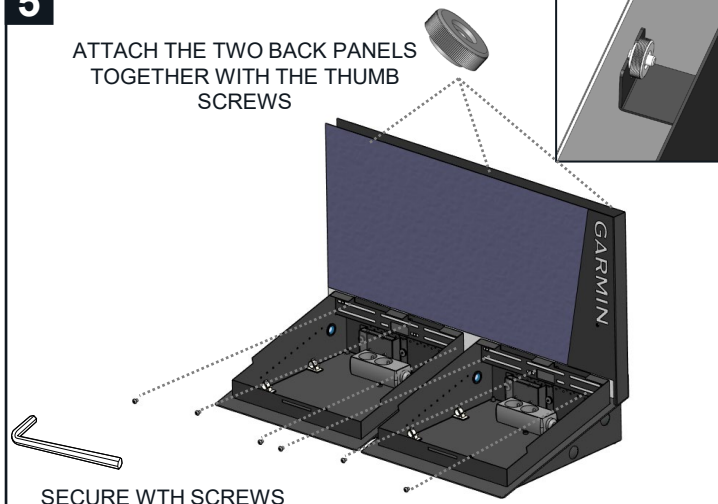
ENSURE MAG GRAPHIC IS
ATTACHED TO BACK PANEL



POSITION GRAPHIC AND
PANEL INTO THE CTU'S

5

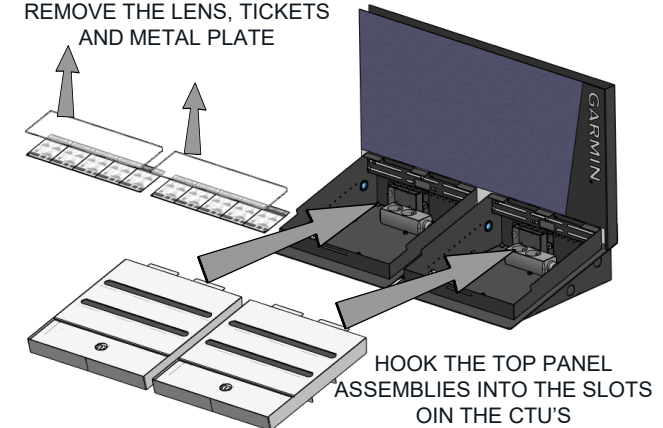
ATTACH THE TWO BACK PANELS
TOGETHER WITH THE THUMB
SCREWS



SECURE WITH SCREWS

6

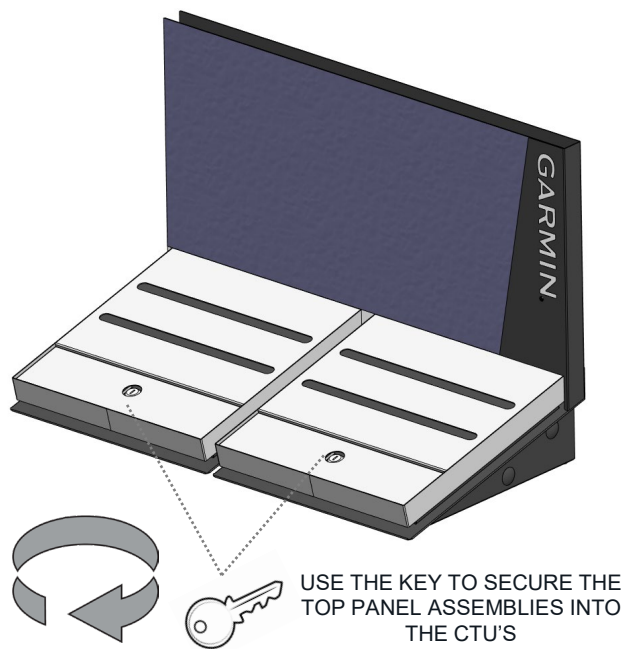
REMOVE THE LENS, TICKETS
AND METAL PLATE



HOOK THE TOP PANEL
ASSEMBLIES INTO THE SLOTS
ON THE CTU'S

GARMIN

7



8



9

