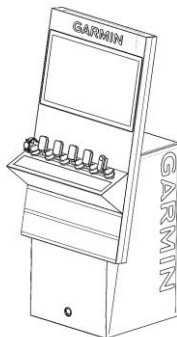
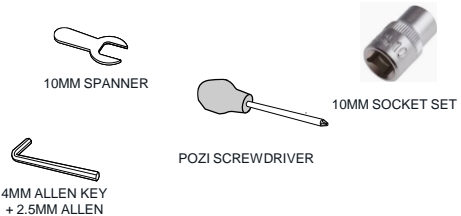


REPLACING COMPUTER

Tools Required



KIT OF PARTS

VELCRO TAPE - LOOPS
Part No. ESSENTRA 494644
VELCRO TAPE - LOOPS - 19mm WIDE X
1.150mm THICK X 100mm CUT LENGTH
SEE PARTS LIST
PE LOW DENSITY FILM
VELCRO TAPE - LOOPS

ADHESIVE CABLE-TIE MOUNT, BLACK
Part No. ESSENTRA 494644
BLACK
NYLON
NYLON

CABLE TIE 100X2.5 NATURAL
Part No. ESSENTRA 460177
NATURAL
NYLON

MEDIA PLAYER RK3588 ANDRIOD 12 OS
4G+32G MODULE

MACHINE SCREW M4X10MM BUTTON
SOCKET
Part No. ISO 7380
BZP

LARGE WASHER M4 FLAT ID 4.3 OD 12
Part No. BZP

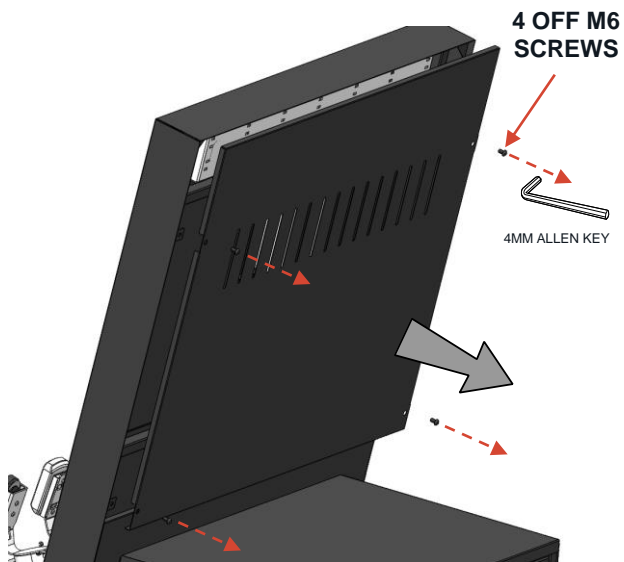
BRACKET FOR MEDIA PLAYER

CABLE TIE 368X3.6 BLACK
Part No. ESSENTRA 460223
BLACK
NYLON

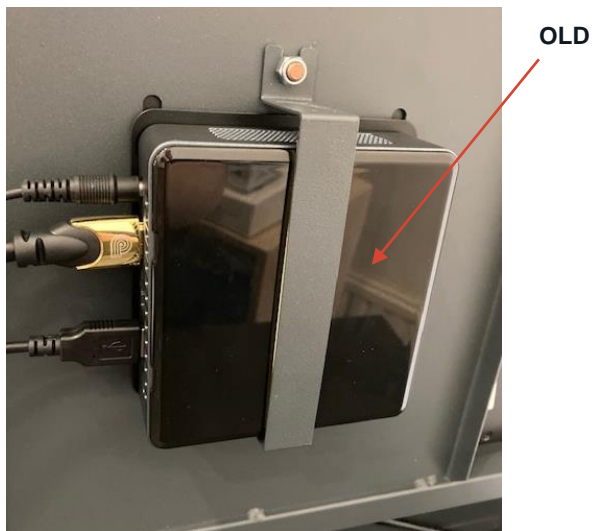
M6 NYLOCK NUT
Part No. M6 NYLOCK NUT
BZP



1



2



3

2 OFF M6
NUTS



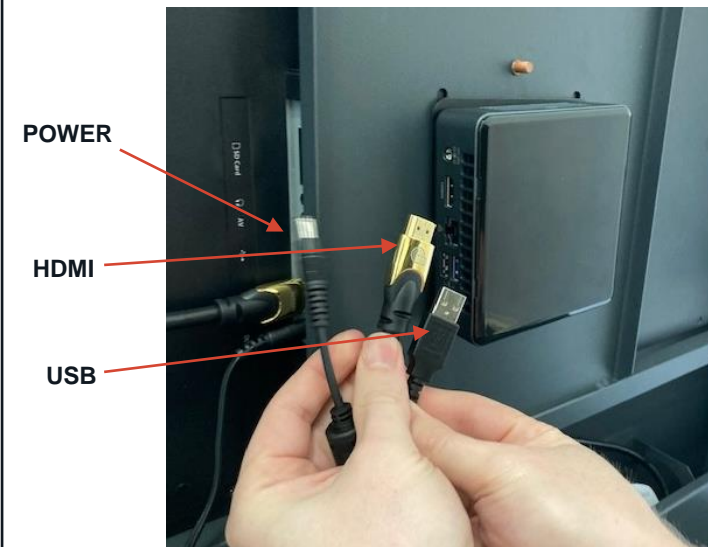
4



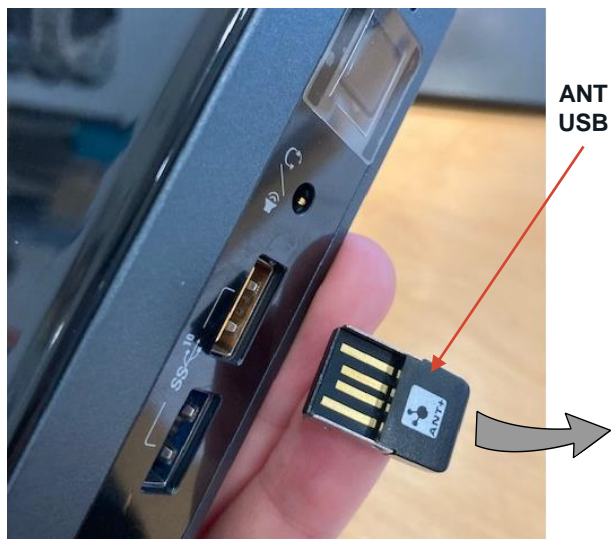
5



6



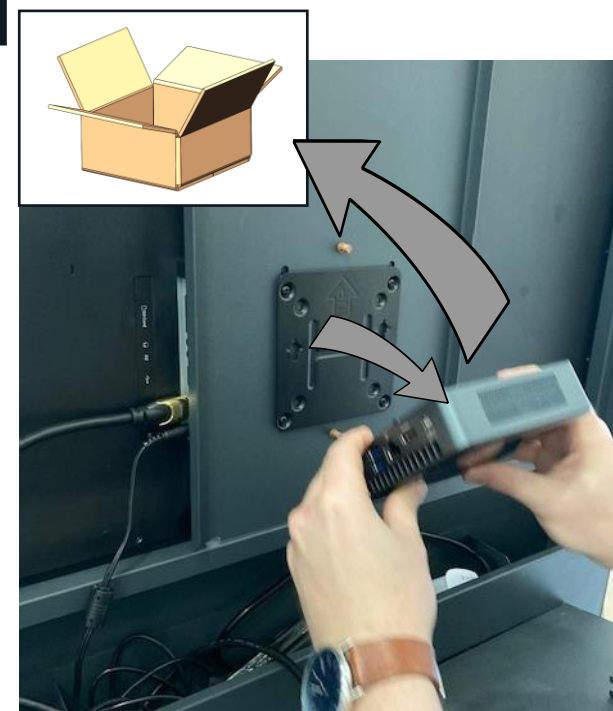
7



8



9



7

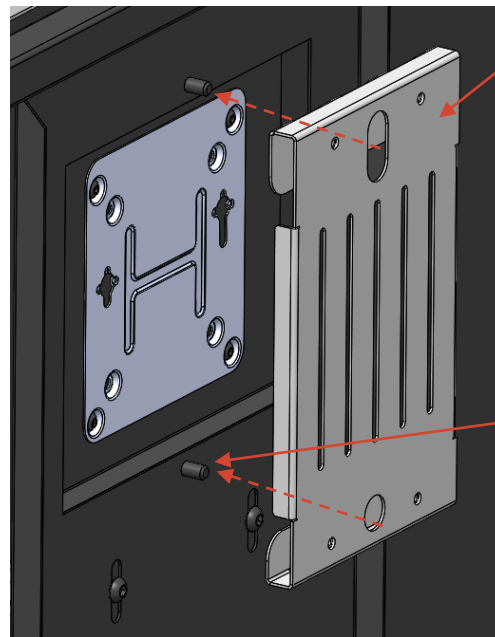
NEW
MEDIA PLAYER
RK3588



8

MEDIA PLAYER
BRACKET

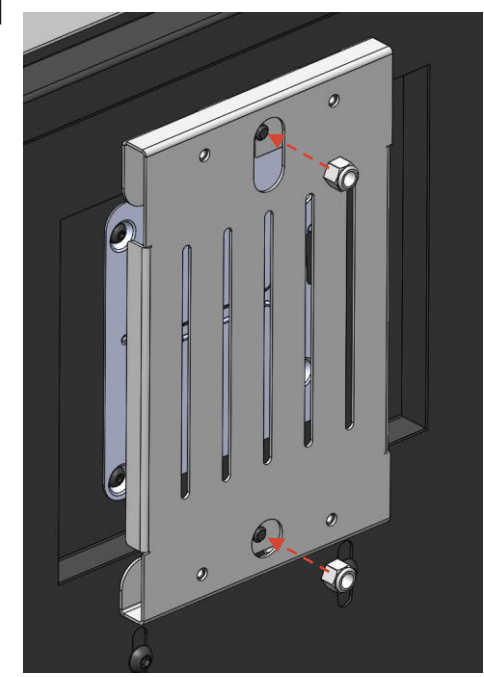
FIT BRACKET
ONTO
EXISTING
STUDS



9

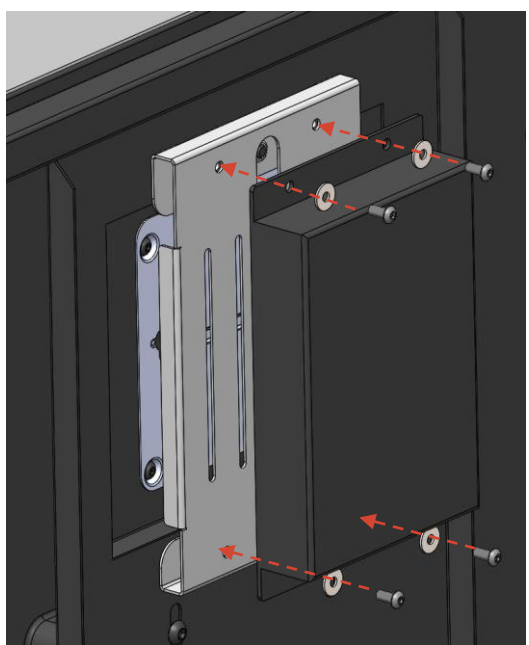
SECURE
BRACKET
WITH 2 OFF M6
LOCKING NUTS

USE
10MM SOCKET SET



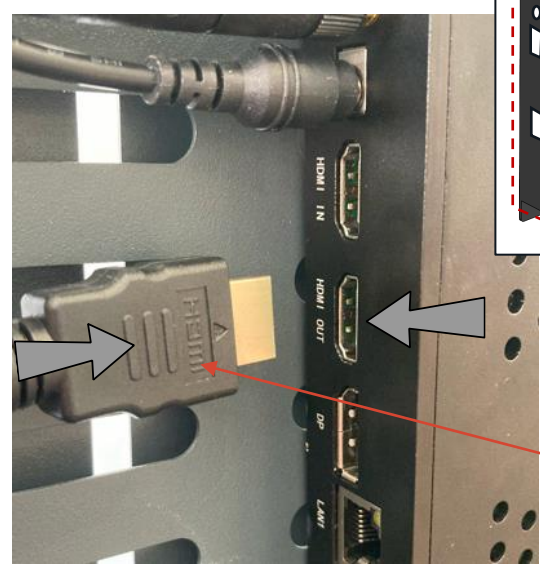
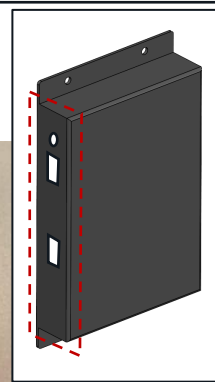
10

SECURE MEDIA
PLAYER TO
BRACKET WITH
M4 SCREWS
AND WASHERS



11

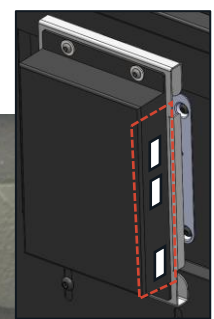
PLUG HDMI CABLE
FROM EXISTING
SCREEN INTO THE HDMI
OUT PORT



HDMI

12

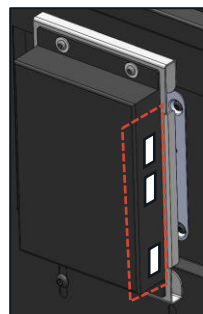
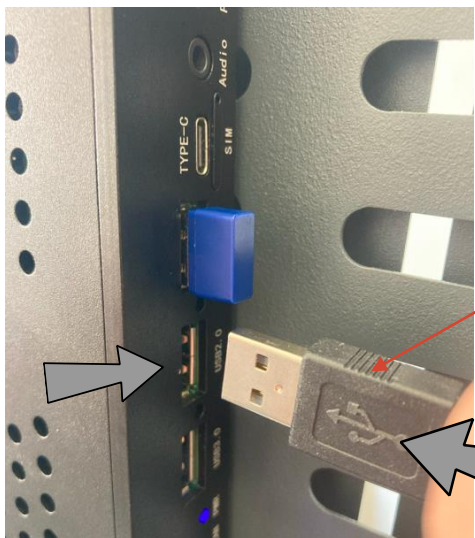
PLUG ANT USB STICK
BACK INTO THIS PORT
ON RIGHT HAND SIDE



ANT
USB

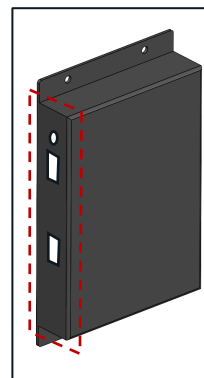
13

PLUG USB CABLE
COMING FROM SCREEN
INTO THIS AVAILABLE
PORT



USB

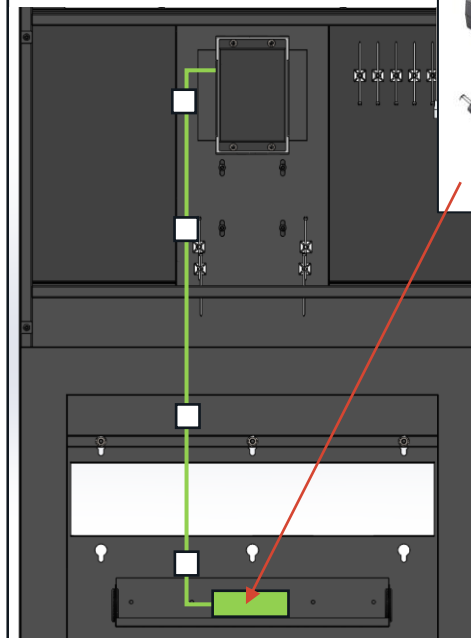
14



PLUG THE NEW
SUPPLIED MEDIA
PLAYER PSU POWER
SUPPLY INTO THE NEW
MEDIA PLAYER

AT THIS POINT REMOVE
THE EXISTING AND NOW
REDUNDANT POWER
SUPPLY.

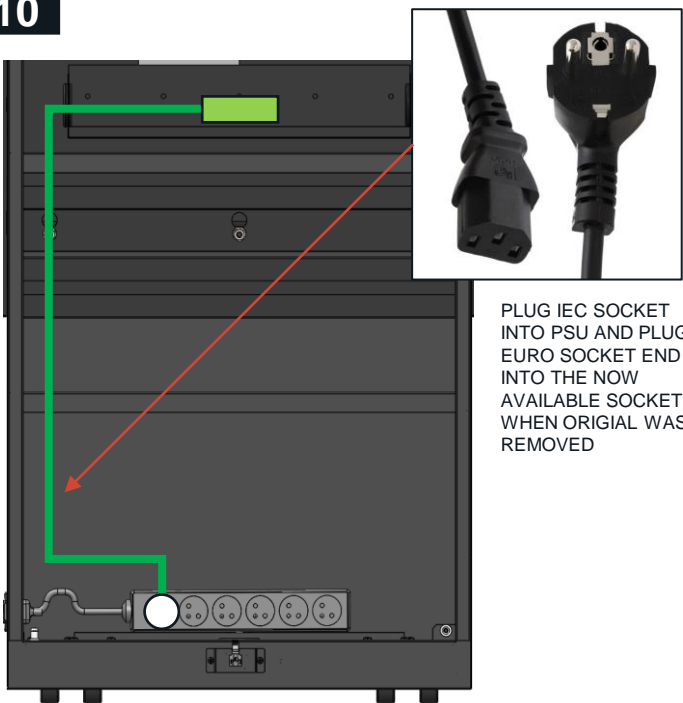
9



VELCO TAPE THE PSU
POWER SUPPLY INTO
GEAR TRAY AREA

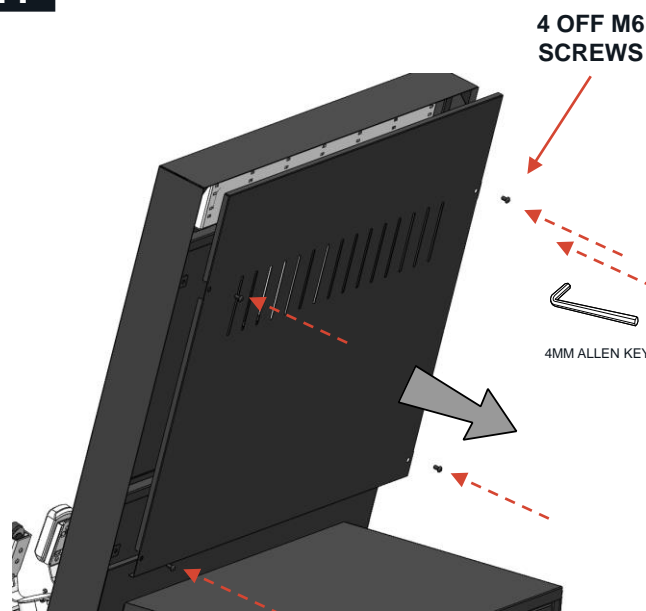
AND MANAGE CABLE
DON INTO AREA WITH 4
OFF CABLE TIES AND
MOUNTS.

10



PLUG IEC SOCKET
INTO PSU AND PLUG
EURO SOCKET END
INTO THE NOW
AVAILABLE SOCKET
WHEN ORIGINAL WAS
REMOVED

11



4 OFF M6
SCREWS



4MM ALLEN KEY

12

NEXT STAGE
NOW FOLLOW THE

CONNECTIVITY
AND SCREEN
INTERFACE

ASSETS PAGE – DELETE BEFORE ISSUING OR PRINTING

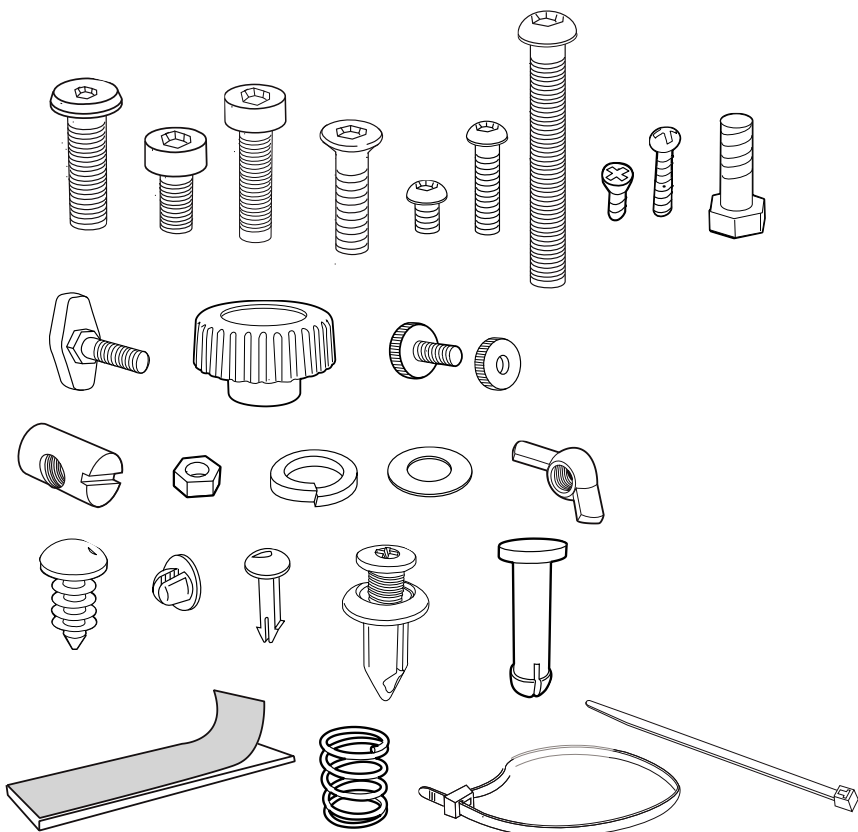
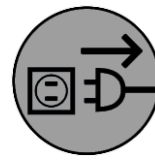
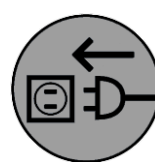
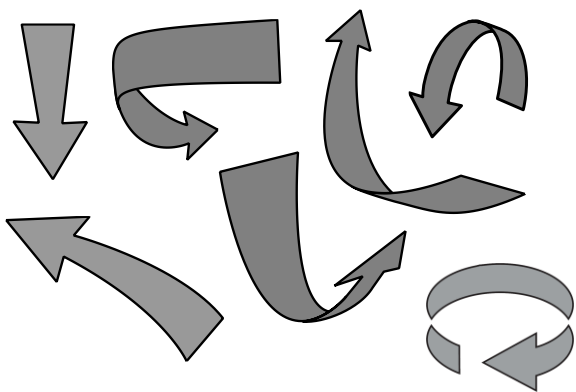
Ⓐ x#

Ⓐ

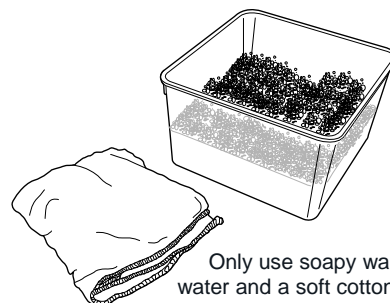
1



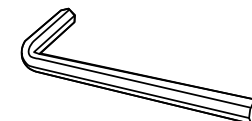
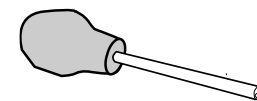
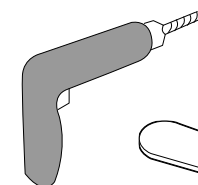
Notes



Do NOT use chemical based cleaning products or abrasive cloth's & sponges



Only use soapy warm water and a soft cotton cloth when cleaning the display



GARMIN®